

# PERSONAL NAVIGATOR

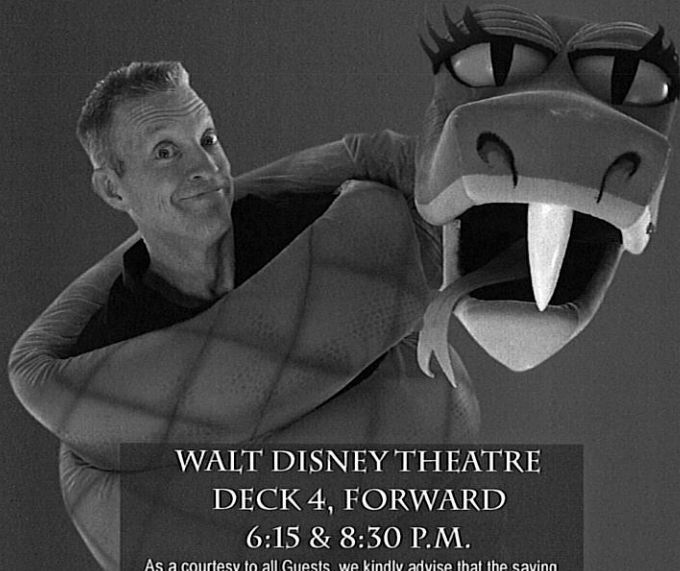


MONDAY, OCTOBER 28, 2013

Sunrise: 7:32 a.m. Sunset: 6:50 p.m.  
 Evening Attire: Cruise Casual  
 All Ashore: Approx: 11:00 a.m.  
 All Aboard: 4:45 p.m.

Monday: Partly Cloudy High: 79°F/26°C

KEY WEST



## SHOWTIME TONIGHT

The Comedy & Ventriloquism of

**Michael**

**Harrison**

WALT DISNEY THEATRE  
 DECK 4, FORWARD  
 6:15 & 8:30 P.M.

As a courtesy to all Guests, we kindly advise that the saving of seats is not permitted in the Walt Disney Theatre.



Assistance available at the entrance to the Walt Disney Theatre 30 minutes prior to show time.



### Key West Port Information

The U.S. government acquired Key West from Spain in the early 1800s. During those days, most of the isolated islanders made their living as wreckers and pirates, diving for the booty from ships that wrecked on the coral reefs offshore.

In the early 1930's Key West was recognized as a resort town and hotels, restaurants, bars sprang up around the island. For about 6 months business was wonderful until a hurricane tore up the railroad and rendered the island helpless.

The State of Florida and the Federal Government took over and began the work of rehabilitation, particularly directed toward development of tourist facilities and attractions.

The number one business here is tourism and a laid back kind of fun. But only in Key West does the sun shine the brightest when it sets.

Everyone gathers for the never planned, always varied Sunset Celebration on the Mallory Dock. Once the sun is safely tucked away by jugglers, mimes, musicians and street artists, the city moves to a different beat.

#### Navy Pier Information:

The Disney Wonder will be docked at the Navy Pier in Key West. Complimentary transportation from the ship to Mallory Square will be provided as the pier is a secure area and walking to/from town will not be permitted. Transportation will run continuously throughout the afternoon with the last departure back to the ship at 4:30 p.m.



**It's time to play everyone's favorite couple's game show, Match your Mate!**

*Wavebands (18+),  
 Deck 3, Forward,  
 10:15 p.m.*

### Don't Miss:

#### 60's Music Trivia (18+)

*Diversions, Deck 3, Forward - 9:30 a.m.*

Join your Club Host Simon, as he tests your knowledge of 60's music trivia against fellow guests.

#### So You Think You Know Your Family

*Studio Sea, Deck 4, Forward - 7:30 & 9:30 p.m.*

This fun-filled family game show is always full of surprises. Find out how well you know, or don't know your family!

#### Club New Year's Eve

*Studio Sea, Deck 4, Midship - 10:15 p.m.*

"The party don't start, till you walk in." Bring your family and help us count down to a brand new year!

#### Rockin' Rowdy (18+)

*Wavebands, Deck 3, Forward - 11:00 p.m.*

Join your Club Host Simon, as we round up the greatest rock and country hits. Featuring a bootstomping performance from the Boot Scootin' dancers to start the party.



Book your next cruise onboard and save 10% on prevailing rates as quoted on [disneycruise.com](http://disneycruise.com). Plus, get an onboard credit and special deposit rate! Visit the Future Cruise Sales Desk for more information.

### DINNER MENU

Animator's Palate: Show Dinner  
 Parrot Cay: Island Dinner  
 Triton's: French Dinner

### DRINK OF THE DAY

Key Lime Margarita (Alcoholic)  
 Mint Tea Fruit Punch (Non Alcoholic)

### IMPORTANT NUMBERS

Fire/Security: 7-3001  
 Medical Emergency: 7-3000  
 Health Center: 7-1923

# FUN FOR ALL AGES HIGHLIGHTS

## DISNEY CHARADES

*Promenade Lounge, Deck 3, Aft - 9:00 a.m.*

Join your Cruise Staff as they put your acting skills to the test in this hilarious guessing game.



## CHIP IT GOLF (12+)

*Lobby Atrium, Deck 3, Midship - 9:30 a.m.*

It's par for the course for our Guests 12 and older to compete on our special "greens" in this fun tournament.

## CRUISIN' FOR TRIVIA

*Promenade Lounge, Deck 3, Aft - 9:30 a.m.*

Navigate your way through a round of questions testing your general knowledge.

## FAMILY CRAFTS: PAPER PLANE MAKING

*Promenade Lounge, Deck 3, Aft - 10:15 a.m.*

Create a fun flyer and watch it "soar."

## WHO AM I?

*Promenade Lounge, Deck 3, Aft - 1:15 p.m.*

Join your Cruise Staff in a fun and hilarious game where our panel has to guess who they are.

## FAMILY CRAFTS

*Promenade Lounge, Deck 3, Aft - 2:00 p.m.*

Create a fun souvenir with your Cruise Staff that is yours to keep.

## DISNEY CRUISE LINE TRIVIA

*Promenade Lounge, Deck 3, Aft - 3:00 p.m.*

Navigate your way through a round of questions testing your Disney Cruise Line knowledge.

## TRIVIA TIME

*Disney Movie Trivia - Promenade Lounge, Deck 3, Aft - 7:30 p.m.*

*Broadway Trivia - Promenade Lounge, Deck 3, Aft - 10:00 p.m.*

Join your Cruise Staff as we test your knowledge at these two fun trivia events.

# ADULT ACTIVITY HIGHLIGHTS

## VISTA SPA FITNESS CLASSES & SEMINARS

*Sunrise Stretch - Vista Spa Fitness Center - 7:00 a.m.*

*AB Attack - Vista Spa Fitness Center - 7:30 a.m.*

*Go Smile Seminar - Outlook Cafe - 2:30 p.m.*

*Hair Seminar - Outlook Cafe - 3:30 p.m.*



VISTA SPA

## TASTING CLASSES

*Tequila & Margarita Tasting (21+) - Outlook Cafe - 10:30 p.m.*

Please make reservations for tastings at Guest Services for a nominal fee.

Tasting Seminars are only for Guests 21 and Older.



## MIXER

*Diversions, Deck 3, Forward - 10:00 p.m.*

Club 18\*21 is an exclusive gathering for young adult Guests.

Come meet fellow cruisers your own age and have some fun.

## 60'S MUSIC TRIVIA

*Diversions, Deck 3, Forward - 9:30 a.m.*

Let's step back in time as we test your 60's music knowledge with your Club Host, Simon.

## LIVE MUSIC WITH CARRIE STONE

*Quiet Cove Pool, Deck 9, Midship - 4:45, 7:30 & 9:30 p.m.*

Join Carrie Stone as she plays live for your listening pleasure.

## LIVE PIANO WITH TIM MOSS

*Cadillac Lounge, Deck 3, Forward - 7:30, 9:30, 10:30 & 11:30 p.m.*

Join Tim Moss as he plays live for your listening pleasure, including a featured set "Tribute to Nat King Cole" at 7:30 p.m..

## ROCKIN' ROWDY

*Wavebands, Deck 3, Forward - 11:00 p.m.*

Join your Club Host Simon, as we round up the greatest rock and country hits. Featuring a bootstomping performance from the Boot Scootin' dancers to start the party.

# DCL GIFT PACK JACKPOT BINGO

**Wavebands, Deck 3, Forward  
Card Sales - 4:45 p.m.  
Game Starts - 5:00 p.m.**

Four cash prize games and four DCL Gift Packs to be won. The jackpot continues to grow and could go at any time!



# YOUTH ACTIVITIES HIGHLIGHTS

## DINE & PLAY

A convenience for families dining at 8:15 p.m., our Youth Activities Counselors will be available at 9:15 p.m. at the entrance of Triton's, Parrot Cay and Animator's Palate dining rooms to bring registered children to join the fun in the Oceaneer Club and Oceaneer Lab.



Deck 5, Aft (7-18500) **9:00 a.m. - 11:00 p.m.**

Infants and Toddlers can enjoy toys and activities at Flounder's Reef Nursery. Reservations are first come, first served so please stop by!



Deck 5, Midship (7-1440)  
(3 - 12 years old) **9:00 a.m. - 12:00 mid**

### CHIP AND DALE'S RESCUE RANGERS

9:30 a.m.

Chip and Dale are recruiting new Rescue Rangers and your children will enroll into Ranger School in order to become official Rescue Rangers.

### THE ROYAL BALL

9:30 p.m.

Attend your own Royal Ball and learn to be a prince or a princess.



Deck 5, Midship (7-1445)  
(3 - 12 years old) **9:00 a.m. - 12:00 mid**

### LAVA FLOW

10:15 a.m.

Build your own volcano and watch it erupt as you learn about the physics of volcanoes.

### MARSHMALLOW OLYMPICS

8:45 p.m.

Learn all about this white sugary treat and everything it can do! Build a tower, go flying and test your agility - all with the help of a marshmallow.



Deck 2, Midship (7-5810)  
(11 - 14 years old) **10:00 a.m. - 12:00 mid**

### CROWNING OF THE COUCH POTATO

10:00 p.m.

Do you think you know your movies, TV and commercials? Well it's time to test your knowledge on all the recent releases.

### FLUBBER

12:00 mid

Encounter solid, liquid, gas and make "Flubber-like Goo".



Deck 11, Midship (7-18517)  
(14 - 17 years old) **12:00 p.m. - 2:00 a.m.**

### GENDER WARS

4:30 p.m.

It's the battle of girls vs. boys... Who will dominate to win the ultimate battle?

### TEEN CHOICE

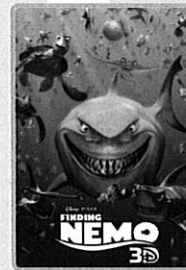
10:15 p.m.

It's your turn to decide on some fun activities for you and your friends.

# BUENA VISTA THEATRE

## Today's Movies

**DOLBY.3D**



8:30 a.m.  
Duration: 1 hr 40 mins  
Rating: G

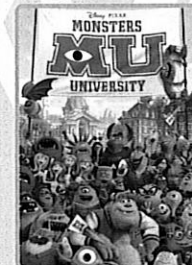


11:00 a.m.  
Duration: 2 hrs 7 mins  
Rating: PG

**DOLBY.3D**



2:00 p.m. & 10:30 p.m.  
Duration: 2 hrs 30 mins  
Rating: PG-13



5:30 p.m. & 8:00 p.m.  
Duration: 1 hr 43 mins  
Rating: G

So You Think  
You Know  
Your Family?

### FAMILY GAME SHOW

This fun-filled family game show is always full of surprises. Find out how well you know, or don't know your family!

Studio Sea,  
Deck 4, Midship,  
7:30 & 9:30 p.m.

ROCKIN'  
ROWDY!

### ADULT THEME NIGHT

Join your Club Host Simon, as we round up the greatest classic rock and urban country hits. Featuring a bootstomping performance from the Boot Scootin' dancers to start the party.

WaveBands (18+),  
Deck 3, Forward,  
11:00 p.m.

### YOUTH ACTIVITIES OPEN HOUSE

Open House is an opportunity for all to come and participate in a variety of exciting activities and free time in the Oceaneer Club, Oceaneer Lab, Flounder's Reef Nursery, Vibe and Edge throughout the cruise. During these times secured programming will still be offered in the other venue for those looking to check their children into care.

Edge: 10:00 a.m. - 12:00 p.m. Disney's Oceaneer Club: 11:30 a.m. - 3:00 p.m.  
Vibe: 12:00 p.m. - 2:00 p.m. Disney's Oceaneer Lab: 7:15 p.m. - 8:30 p.m.  
Edge: 8:00 p.m. - 9:30 p.m.

# MORE TO ENJOY WHILE ONBOARD

## DISNEY VACATION CLUB® GROUP PREVIEW

Want to learn more about taking magical vacations year after year? Please see a Disney Vacation Club representative on Deck 4, Midship, or call 7-2805 from your stateroom phone for more information about our interactive group presentation.

## PLAN YOUR NEXT DISNEY CRUISE LINE VACATION!

Book your next cruise today for the best availability and pricing. You'll save 10%, receive up to a \$200 onboard credit, and pay a reduced deposit! Visit the Future Cruise Sales Desk, Deck 4, Midship, or call 7-2848.

## SHOPPING EVENTS

**GIGANTIC SAVINGS IN KEY WEST!** It's your chance to buy your perfect piece of Tanzanite, or upgrade your Diamond to what you've always dreamt of. Join Lauren at Diamonds International for her shopping party and RAFFLE between 12:00 p.m. - 2:00 p.m.

## QUARTER MASTERS ARCADES

Ever dreamed of flying high in the Sky? On After Burner feel the adrenaline while you are a Pilot traveling on a turbulence adventure, in the exclusive Quarter Masters Arcade, located on Deck 9, Midship.

## WIRELESS INTERNET: KEEPING YOU CONNECTED AT SEA

\$0.75 per minute or save money by buying blocks of time. \$55 for 100 minutes, \$100 for 250 minutes and \$150 for 500 minutes. Wireless information sheets are available at Guest Services, Deck 3, Midship, Internet Cafe, Deck 3, Aft, Cove Cafe, Deck 9, Midship and Outlook Cafe, Deck 10, Midship. **Due to the technology involved and satellite connectivity, the onboard internet service will be noticeably slower than you may be accustomed to and might at times be interrupted or unavailable.**

## EARLY FLIGHT DEPARTURES

Guests with flights departing prior to 12:00 p.m. are kindly asked to notify Guest Services located on Deck 3, Midship, no later than 12:00 noon on the last day of the cruise.

## CARE FREE TRAVEL OPTION

Visit Guest Services on Deck 3, Midship, to book shuttle service from our port back to George Bush Houston Intercontinental Airport. Cost is \$45.00 per person and may be booked up until 12:00 midday on the second from last day of the cruise.



Today we visit Key West, the southernmost town on the Continental USA. Hop onboard the world Famous Old Town Trolley or set sail on the Fury Catamaran for a wonderful snorkeling adventure. Your Port Adventures Team is standing by to help you make the most of your day. Visit the Port Adventures Desk, Deck 3, Midship, to plan your adventure!

## SHOPPING

### MYSTERY PINS

Purchase a Mystery Pin for just \$2.95 with any merchandise purchase of \$30.00 or more. Available in Mickey's Mates and Treasure Ketch. While supplies last.

### ART GALLERY - DISNEY CRUISE LINE COLLECTION

Visit the Art Gallery, Deck 4, Midship to view our incredible Disney Cruise Line collection of inspired art by many Disney Artists. Each piece captures the essence of Disney Cruise Line in a unique style. Perfect to relive your cruise experience or spice up your personal art collection.

### SOPHIA FIORI DIAMOND TRUNK SHOW

Sophia Fiori is the world's leader in vivid colored diamonds and jeweler to the stars. Carol is your Jewelry Stylists with Sophia Fiori and diamond industry experts. For THIS WEEK ONLY, the Sophia Fiori team brought with them over \$1 Million in Diamonds and Tanzanite Jewelry at all price points from \$500 up to extravagant connoisseur pieces.

### DUTY FREE LIQUOR PROMOTION

Receive 10% off any bottle over \$100! Don't miss out this great promotion. Radar Trap, Deck 3, Forward.

### PHILIP STEIN WATCHES ARRIVE!

Philip Stein Watches arrive onboard Disney Cruise Line. Philip Stein watches are not just a watch, but an element of a healthy and well-balanced lifestyle. People who wear Philip Stein care about their looks as well as their overall well-being. The timepieces reflect the attitude and personal values of the wearer. See the entire Collection today at Treasure Ketch, All at great Duty Free Prices.

### NEW DOONEY & BOURKE ONBOARD

Loved for their fine leather and unique designs, Dooney & Bourke creates styles that are sure to inspire. Visit Treasure Ketch and check out the new Dooney & Bourke handbags designed especially for Disney Cruise Line®. Deck 4, Forward



### VISTA SPA

Deck 9, Forward - Phone: 7-1465

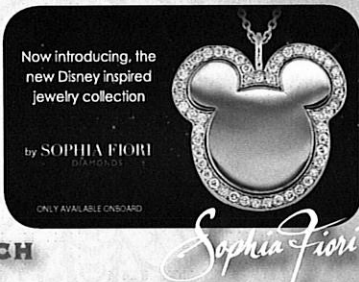
### PAMPER PACKAGE

Full body massage with mini facial

Today Only: 75 minutes only \$149

### TODAY'S SHOPPING SPECIAL

Stop by Treasure Ketch to try on the world's most memorable white diamond pieces and commemorate your cruise.



### TREASURE KETCH

Deck 4, Forward



### GET THE PICTURE

Your professional cruise photos all inclusive packages\*  
All your digital files or prints - \$349.95  
Add all prints - \$50.00

\*Offer valid per stateroom only. Terms and conditions apply.  
Photos captured on your vacation are only available for purchase during this cruise.

DW1531 10-26-2013 ©DISNEY

## IMPORTANT INFORMATION

### Security Notice

All Guests (including Children) who wish to disembark or embark the ship are required to present their Key to the World card at the gangway. A photo ID is also required for those Guests who are 18 years of age or older. Guests under the age of 18 are required to have a Parent, Guardian or other responsible adult sign an authorization form at the time it is given out if they wish to go ashore unaccompanied. Authorization forms are available at the gangways and Guest Services.

### Cold and Flu Reminder

Please wash hands frequently and thoroughly. Please refrain from throwing anything over the Ship's side. Thank you.

### Inclement Weather

For the safety of all Guests, outdoor events may be changed due to unforeseen weather conditions.

### Corridor Quiet Hours

As a courtesy to all our Guests, please recognize quiet hallway hours from 10:00 p.m. til 8:00 a.m.

### Environmental Message

With Disney's commitment to the Environment please refrain from throwing anything over the Ship's side. Thank you.

### No Reserved Seats Policy

As a courtesy to all Guests we kindly advise that the saving of seats is not permitted in the Walt Disney Theatre, and the saving of the sun loungers is not permitted on Deck 9 and 10. Items left unattended will be returned to lost and found at Guest Services, Deck 3, Midship.

### Smoking

For the comfort of our Guests the following open deck areas are designated as Smoking areas: Deck 4, Starboard side from 6:00 p.m. to 6:00 a.m. ONLY, Deck 9 Forward Starboard side at Quiet Cove and Deck 10 Starboard side. Smoking is prohibited in all Guest staterooms. Guests found smoking in their staterooms will be charged a \$250 stateroom recovery fee. Electronic cigarettes may only be used in designated smoking areas.

### Sunscreen Advisory

Don't forget to apply sunscreen and insect repellent when going ashore.

### Walt Disney Theatre

Theatrical performances may use artificial fog, strobe lights, pyrotechnics and other special effects. For the safety of our performers and the comfort of those around you, the use of any photography or video recording device or any electronic equipment is prohibited.

### Verandah Safety

Please do not leave any combustible materials on your balcony when not present in your stateroom for safety reasons.

Morning	8:30	8:45	9:00	9:15	9:30	9:45	10:00	10:15	10:30	10:45	11:00	11:15	11:30	11:45	12:00	12:15	12:30	12:45	1:00	1:15	1:30																					
FUNNEL VISION	Lady and the Tramp (G) Funnel Vision						Fun in the Sun Goofy Pool Stage						Toy Story (G) Funnel Vision						Cinderella (G) Funnel Vision																							
BUENA VISTA THEATRE	Finding Nemo (G) <b>DOLBY 3D</b> Duration: 1 Hour 40 Minutes												Oz The Great and Powerful (PG) <b>DOLBY 3D</b> Duration: 2 Hours 7 Minutes																													
CHARACTER	Minnie Lobby Atrium						Mickey Lobby Atrium						Daisy Lobby Atrium						Donald Lobby Atrium																							
FUN FOR ALL AGES	Disney Charades Promenade Lounge						Chip It Lobby Atrium (12+)						Family Crafts: Paper Plane Making Promenade Lounge						Wii Challenge Promenade Lounge						Who Am I? Promenade Lounge																	
ADULTS	Friends of Bill W. Outlook Cafe						60's Music Trivia Diversions						Wii Challenge Diversions						Walk A Mile Preludes																							
VIBE 14-17 YEARS OLD	Youth Activities Open House																																									
EDGE 11-14 YEARS OLD	Youth Activities Open House																																									
OCEANEER LAB 3-12 YEARS OLD	Games & More												Lava Flow												Lunch						Float Fun Trivia											
OCEANEER CLUB 3-12 YEARS OLD	Chip and Dale's Rescue Rangers												Wishing Upon a Star												Youth Activities Open House "Little Einstein's Adventure" 11:45 a.m. - 12:30 p.m.												Craft Corner					

Afternoon	1:45	2:00	2:15	2:30	2:45	3:00	3:15	3:30	3:45	4:00	4:15	4:30	4:45	5:00	5:15	5:30	5:45	6:00	6:15	6:30	6:45															
FUNNEL VISION	Tarzan (PG) Funnel Vision						Brother Bear (G) Funnel Vision						Mulan (G) Funnel Vision																							
BUENA VISTA THEATRE	Lincoln (PG-13) Duration: 2 Hours 30 Minutes												Monsters University (G) <b>DOLBY 3D</b> Duration: 1 Hour 43 Minutes																							
CHARACTER	For detailed character appearances, call 7-PALS or refer to the Character Screen in the Lobby Atrium.																																			
FUN FOR ALL AGES	Family Crafts: Bead Making Promenade Lounge						Disney Cruise Line Trivia Promenade Lounge						Golf Putting Lobby Atrium						Bingo Pre Sales DCL Gift Pack Jackpot Wavebands						SHOWTIME featuring The Comedy and Ventriloquism of Michael Harrison Walt Disney Theatre											
ADULTS	Go Smile Seminar Outlook Cafe						Toddler Time Disney's Oceaneer Club - Captain's Closet						Disney Vacation Club Group Preview Studio Sea						Starlite Duo Live Promenade Lounge						Live Music with Carrie Stone Quiet Cove Pool											
VIBE 14-17 YEARS OLD	Open House						Smoothie Hour						Craft Corner						Gender Wars						Pictionary						Sports Deck Fun					
EDGE 11-14 YEARS OLD	Tween Choice												Wii Challenge												Craft Corner						Sports Deck Fun					
OCEANEER LAB 3-12 YEARS OLD	Float Fun Trivia						Pinata Party												Now A Word From Your Sponsor						Dinner											
OCEANEER CLUB 3-12 YEARS OLD	Youth Activities Open House "Craft Corner" 1:15 p.m. - 2:15 p.m.												Carnival Extravaganza												Magic Show						Dinner					

Evening	7:00	7:15	7:30	7:45	8:00	8:15	8:30	8:45	9:00	9:15	9:30	9:45	10:00	10:15	10:30	10:45	11:00	11:15	11:30	11:45	12:00																											
FUNNEL VISION	Ratatouille (PG) Funnel Vision						Remember The Titans (PG) Funnel Vision																																									
BUENA VISTA THEATRE	Monsters University (G) <b>DOLBY 3D</b> Duration: 1 Hour 43 Minutes												Lincoln (PG-13) Duration: 2 Hours 30 Minutes																																			
CHARACTER	Chip & Dale Lobby Atrium						Goofy Lobby Atrium						Minnie Lobby Atrium						Stitch Lobby Atrium																													
FUN FOR ALL AGES	Pin Trading Station Preludes						So You Think You Know Your Family? Studio Sea						SHOWTIME featuring The Comedy and Ventriloquism of Michael Harrison Walt Disney Theatre						So You Think You Know Your Family? Studio Sea																													
ADULTS	Disney Movie Trivia Promenade Lounge						Tribute to Nat King Cole Cadillac Lounge						Live Music with Andrew Victoria Wavebands						Love Songs with Starlite Duo Promenade Lounge						Broadway Trivia Promenade Lounge						Live Music with Starlite Duo Promenade Lounge						Rockin' Rowdy Wavebands						Guest DJ Day-na Wavebands					
VIBE 14-17 YEARS OLD	Sports Deck Fun						Wii Challenge						Pump It Up						Teen Choice																													
EDGE 11-14 YEARS OLD	Just Dance												Youth Activities Open House												Crowning of the Couch Potato																							
OCEANEER LAB 3-12 YEARS OLD	Youth Activities Open House "Ratatouille Cooking School" 7:30 p.m. - 8:15 p.m.												Marshmallow Olympics												Girls Chill																							
OCEANEER CLUB 3-12 YEARS OLD	Highland Games												The Royal Ball												Boys Chill																							

Symbol for activities that will be repeated during the cruise

FOLD

Fold along the dotted lines and take me with you so you don't miss any of the fun!

FOLD

IN THE SPOTLIGHT SERIES  
SOLVE IT! SERIES  
JUMP UP! SERIES  
CREATE & INVENT SERIES  
OPEN HOUSE  
CLUBHOUSE SERIES  
STORYBOOK SERIES

MONDAY, OCTOBER 28, 2013 - KEY WEST

# BUENA VISTA THEATRE

DOLBY.3D

DOLBY.3D



8:30 a.m.  
Duration:  
1 hr 40 mins  
Rating: G



11:00 a.m.  
Duration:  
2 hrs 7 mins  
Rating: PG



2:00 & 10:30 p.m.  
Duration:  
2 hrs 30 mins  
Rating: PG-13



5:30 & 8:00 p.m.  
Duration:  
1 hr 43 mins  
Rating: G

## Character Appearances

### DAISY DUCK

Lobby Atrium - 9:30 a.m.,  
5:15 p.m. & 7:45 p.m.

### MINNIE MOUSE

Lobby Atrium - 9:30 a.m.,  
5:45 p.m. & 9:30 p.m.

### DONALD DUCK

Lobby Atrium - 10:00 a.m.,  
5:15 p.m. & 9:30 p.m.

### MICKEY MOUSE

Lobby Atrium - 10:00 a.m.,  
5:45 p.m. & 10:00 p.m.

### CHIP & DALE

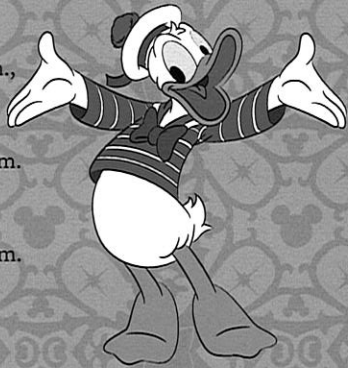
Deck 4, Midship - 5:15 p.m.  
Lobby Atrium - 7:15 p.m.

### GOOFY

Deck 4, Midship - 5:45 p.m.  
Lobby Atrium - 7:45 p.m.

### PLUTO

Lobby Atrium - 7:15 p.m.



Don't forget your Camera to capture those Magical Moments!

Check here each day for Character appearances.

For detailed Character appearance information, please dial 7-PALS or see the Character Information Board in the Lobby Atrium.

Meet-and-Greets will be advertised for the length of time the line will be open. To avoid disappointment, please meet at start time of appearances.

## YOUTH ACTIVITIES THEMED EXPERIENCES

**CLUBHOUSE SERIES**  
focuses on movement and features content which appeals to younger children.

**STORYBOOK SERIES**  
is designed with a strong connection to the Disney classic stories.

**JUMP UP! SERIES**  
includes large group games & movement-oriented activities.

**CREATE & INVENT SERIES**  
will have a tactile focus allowing children to create and admire their work.

**IN THE SPOTLIGHT SERIES**  
focuses on children's stage presence with lots of activities and enthusiasm.

**SOLVE IT! SERIES**  
are less active, but will challenge children with problem/solutions-based activities.

### YOUTH ACTIVITIES OPEN HOUSE

Activities for families, adults and children of all ages to enjoy together.

## SHIP DIRECTORY

### YOUTH ACTIVITIES

DISNEY'S OCEANEER CLUB	DECK 5, MID	9:00 AM - 12:00 MID
DISNEY'S OCEANEER LAB	DECK 5, MID	9:00 AM - 12:00 MID
EDGE	DECK 2, MID	10:00 AM - 12:00 MID
VIBE	DECK 11, MID	12:00 PM - 2:00 AM
FLOUNDER'S REEF NURSERY	DECK 5, AFT	9:00 AM - 11:00 PM

### POOLS

Children under 12 years of age must have adult supervision in all pools.

GOOPY'S POOL	DECK 9, MID	6:00 AM - 12:00 MID
MICKEY'S POOL	DECK 9, AFT	8:00 AM - 10:00 PM
MICKEY'S SLIDE	DECK 9, AFT	9:00 AM - 5:30 PM
MICKEY'S SPLASH ZONE	DECK 9, AFT	8:00 AM - 8:00 PM
QUIET COVE POOL	DECK 9, FWD	6:00 AM - 12:00 MID

### RECREATION

PORT ADVENTURES DESK	DECK 3, MID	8:30 AM - 12:00 PM 7:00 PM - 8:30 PM
VISTA FITNESS CENTER	DECK 9, FWD	6:00 AM - 10:00 PM
WIDE WORLD OF SPORTS DECK	DECK 10, FWD	24 HOURS

### GENERAL INFORMATION

BUENA VISTA THEATRE	DECK 5, AFT	SHOWTIMES
DISNEY VACATION CLUB DESK	DECK 4, MID	6:00 PM - 10:00 PM
FUNNEL VISION	DECK 9, MID	SHOWTIMES
FUTURE CRUISE SALES DESK	DECK 4, MID	8:30 AM - 10:30 AM 5:00 PM - 6:00 PM 7:30 PM - 10:00 PM
GUEST SERVICES	DECK 3, MID	24 HOURS
MEDICAL HEALTH CENTER	DECK 1, FWD	9:30 AM - 11:00 AM 4:30 PM - 7:00 PM
PORT & SHOPPING DESK	DECK 3, MID	7:30 PM - 8:30 PM
PRELUDES	DECK 4, FWD	5:45 PM - 6:15 PM 8:00 PM - 8:30 PM
QUARTER MASTERS (ARCADE)	DECK 9, MID	24 HOURS
SHUTTERS PHOTO GALLERY	DECK 4, AFT	8:00 PM - 11:00 PM
VISTA SPA AND SALON	DECK 9, FWD	8:00 AM - 10:00 PM
WALT DISNEY THEATRE	DECK 4, FWD	SHOWTIMES

### SHOPPING

ART GALLERY	DECK 4, MID	7:00 PM - 9:00 PM
HAIR BRAIDING	DECK 9, MID	3:00 PM - 7:00 PM 8:30 PM - 10:30 PM
MICKEY'S MATES	DECK 4, FWD	6:00 PM - 11:00 PM
RADAR TRAP (DUTY FREE)	DECK 3, FWD	6:00 PM - 10:30 PM
TREASURE KETCH	DECK 4, FWD	6:00 PM - 11:00 PM

### DINNER MENU

Animator's Palate: Show Dinner  
Parrot Cay: Island Dinner  
Triton's: French Dinner  
Dining Times: 5:45pm & 8:15pm

### DRINK OF THE DAY

Key Lime Margarita (Alcoholic)  
Mint Tea Fruit Punch (Non - Alcoholic)

### WEATHER FORECAST

Monday:  
Partly Cloudy  
High:  
79°F/26°C

Evening Attire: Cruise Casual

## DINING & LOUNGES

### BREAKFAST

BEACH BLANKET BUFFET	DECK 9, AFT	7:30 AM - 10:30 AM
GOOPY'S GALLEY	DECK 9, AFT	6:30 AM - 9:00 AM
PARROT CAY	DECK 3, AFT	8:00 AM - 10:45 AM
TRITON'S (À-LA CARTE)	DECK 3, MID	8:00 AM - 9:30 AM

### LUNCH

BEACH BLANKET BUFFET	DECK 9, AFT	12:00 PM - 2:00 PM
GOOPY'S GALLEY	DECK 9, AFT	10:30 AM - 7:00 PM
PINOCCHIO'S PIZZERIA	DECK 9, MID	10:30 AM - 6:00 PM
PLUTO'S DOG HOUSE	DECK 9, AFT	10:30 AM - 6:00 PM
TRITON'S	DECK 3, MID	12:00 PM - 1:30 PM

### DINNER

ANIMATOR'S PALATE	DECK 4, AFT	5:45 PM & 8:15 PM
PARROT CAY	DECK 3, AFT	5:45 PM & 8:15 PM
TRITON'S	DECK 3, MID	5:45 PM & 8:15 PM
PALO (18+)	DECK 10, AFT	6:00 PM - 9:00 PM
BEACH BLANKET (À-LA CARTE)	DECK 9, AFT	6:30 PM - 8:30 PM
PLUTO'S DOG HOUSE	DECK 9, AFT	6:00 PM - 9:30 PM

### LATE NIGHT SNACKS

DIVERSIONS	DECK 3, FWD	11:00 PM - 12:00 MID
ICE CREAM AT GOOPY'S GALLEY	DECK 9, AFT	7:00 PM - 12:00 MID
PINOCCHIO'S PIZZERIA	DECK 9, MID	9:30 PM - 12:00 MID
PROMENADE LOUNGE	DECK 3, AFT	11:00 PM - 12:00 MID

### ADDED FEATURES

BEVERAGE STATION	DECK 9, AFT, PORT SIDE	24 HOURS
ROOM SERVICE	DIAL 6801 OR 6802	24 HOURS

### ENTERTAINMENT - LOUNGES - BARS

Adults must be 21 and older to consume alcoholic beverages.

CADILLAC LOUNGE (18+)	DECK 3, FWD	5:30 PM - 12:00 MID
COVE CAFE (18+)	DECK 9, MID	6:30 AM - 12:00 MID
DIVERSIONS (18+ AFTER 9:00 PM)	DECK 3, FWD	6:00 PM - 12:00 MID
INTERNET CAFE	DECK 3, AFT	24 HOURS
OUTLOOK CAFE (18+)	DECK 10, MID	10:00 AM - 12:00 MID
PINOCCHIO'S PIZZERIA	DECK 9, MID	9:30 AM - 12:00 MID
PLUTO'S DOG HOUSE	DECK 9, AFT	10:30 AM - 6:00 PM
PRELUDES	DECK 4, FWD	5:45 PM - 6:15 PM 8:00 PM - 8:30 PM
PROMENADE LOUNGE (FAMILY)	DECK 3, AFT	8:00 AM - 12:00 MID
SIGNALS (18+)	DECK 9, FWD	9:30 AM - 10:30 PM
STUDIO SEA	DECK 4, MID	SHOWTIMES
WAVEBANDS (18+)	DECK 3, FWD	9:45 PM - 2:00 AM

Consumers who order raw or partially cooked, ready-to-eat food of animal origin, are hereby informed that the food is not sufficiently cooked to ensure its safety.

All Ashore: Approx: 11:00 a.m.  
All Aboard: 4:45 p.m.

Ship's Agent In Key West

Caribe Nautical Services, Inc. P.O. Box 285, Key West, FL 33041,  
Tel: 305-294-3288 or 305-797-0850

### IMPORTANT NUMBERS

Fire/Security: 7-3001  
Medical EMERGENCY: 7-3000  
Health Center: 7-1923