

MAUI SHOPPING MAP



SHOPPING ASHORE

Exclusive Watch & Jewelry Brands

**Kabana
Na Hoku**

An Overview of Maui

Maui is the most visited of all Hawaiian Islands. It is sparsely populated supporting less than one-tenth of the state's population. It is home to pineapple, sugar cane, cattle ranches, and rain forests. Kahului was a sugar town by 1880; however, real growth has only come during the last 20 years. Also of distinction is Haleakala, the largest dormant volcano in the world, consisting of 30,000 feet of hardened lava rising from the ocean floor capped by a huge crater. Maui is the second largest island in the Hawaiian chain. It is estimated that 50% of the world's humpback whales return to Maui's warm waters where they were born and to mate. Kahului is located on the northern coast of the island on Kahului Bay. During the 1960's, Kahului experienced a growth period mainly due to a large scale-planning project sponsored by the Hawaiian and Commercial Sugar Company. Maui's principle airport is also located in Kahului. Before the city of Lahaina, which is Maui's main city, became a thriving missionary and whaling village, it was the home of Hawaiian kings and queens. Today, Lahaina hums with vibrant tourist activity. Lahaina, often called the "jewel in the crown of Maui," is the second most visited spot on Maui after the beaches.

Once known as Lele, which means "relentless sun" in Hawaiian, Lahaina's sunny climate and oceanfront location offers a beautiful view of the island of Lanai and stunning West Maui sunsets. In ancient times, powerful chiefs and kings ruled this hot, dry, ocean-side village. At the turn of the 19th century, after King Kamehameha united the Hawaiian Islands, he made Lahaina the royal capital until 1845, when the capital was moved to the larger port of Honolulu.

The main road, Front Street, is lined with restaurants, art galleries, and little shopping malls geared towards the thousands of visitors that arrive on a year-round basis. The local residents are friendly and welcome everybody.

STORE#

1a

**PASSMAN GALLERIES
SHOPPING PARTY!**

Join Nick for a Shopping Party between 11:00AM - NOON

**STOP BY NICK'S
SHOPPING DESK...**

with any questions you might have regarding our exciting ports of call!



Maui at a Glance

Capital: Honolulu

Location: Kahului town lies on the north shore of central Maui

Taxi: Taxi, tour buses, shuttle, city buses available

Currency: U.S. Dollar

Language: English and Hawaiian

Population: Approximately 143,574

Banking: Most banks are located on South Punene Avenue and West Kaahumanu Avenue

Post Office: Post offices are located on South Punene Avenue between West Kamehameha Avenue and Hololea Street.

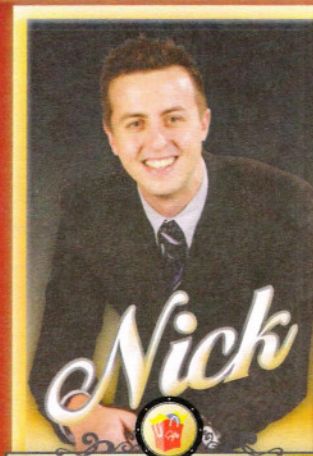
Airport: Kahului Airport is a regional airport in the State of Hawaii, located 3 miles (5 km) east of Kahului

Port Adventures:

Check your ticket for the correct meeting time and location for your tour. Your Port Adventures Team will direct you to transportation. Taxi service is available outside the cruise ship terminal.

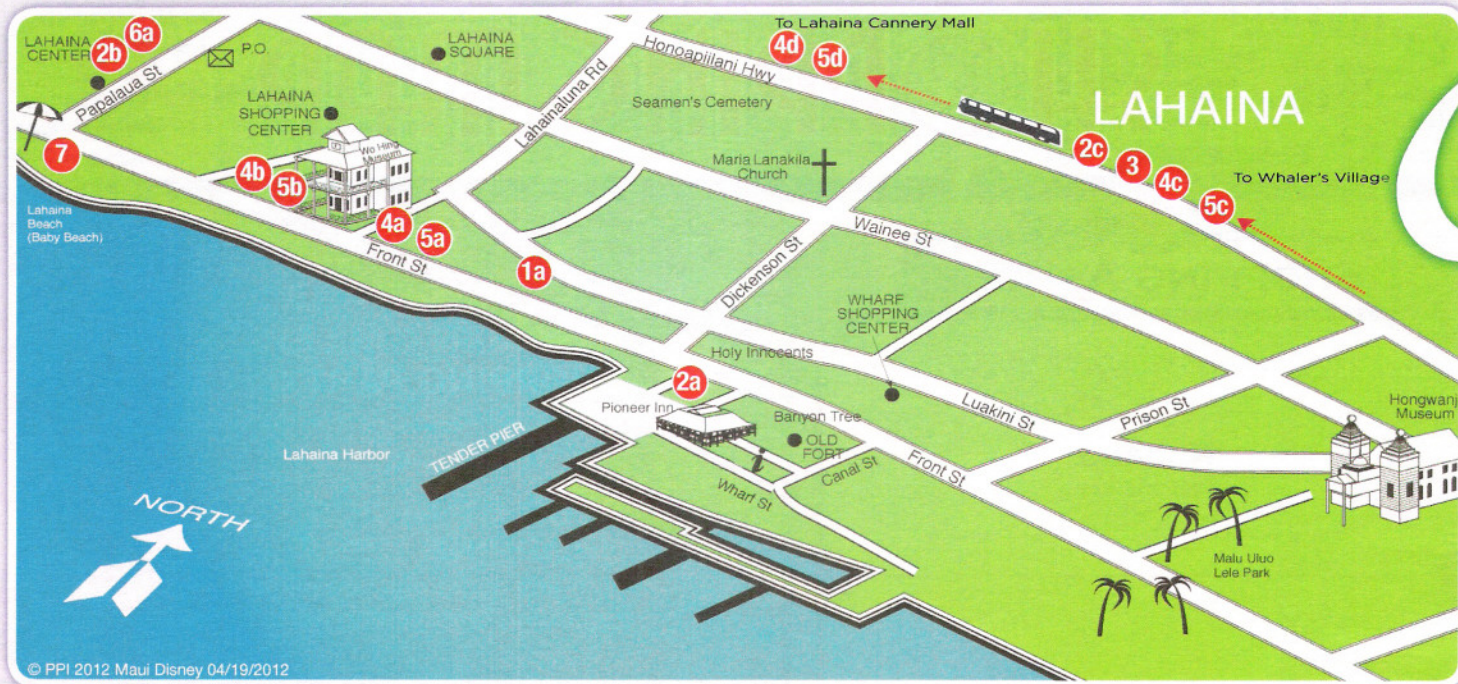
In Case of Emergency:

Inchcape Shipping Services
Foreign Trade Zone #9, 521 Ala Moana Blvd
Suite 2256, Honolulu, HI 96813
Tel: (808) 599-8604
Fax: (808) 529-8603
Cell: (808) 478-9243
E-mail: iss.honolulu@iss-shipping.com



SHOPPING GUIDE

PORT SHOPPING MAP



1a,b PASSMAN GALLERIES *The Black Coral Jewelry Specialist*

- Exclusive handcrafted jewelry designs in black coral & diamonds
- Must see classical ring designs – Riverwalk, Wavebreaker & more
- New 2011 designs introducing yellow sapphires to the collection
- Parterre Collection, a fresh contemporary look in black coral & gold
- Limited editions and one-of-kind black coral sculptures
- Certificate of authenticity, warranty & care card with every purchase

2 a-e MAUI DIVERS JEWELRY *Lifetime Guarantee Since 1958*

- At Pioneer Inn, Whalers Village and Inside Hilo Hattie in Lahaina & Kihei
- Take the free shuttle from the pier to Kahalui
- Win prizes – ask for your free treasure chest key
- Visit Maui Divers Jewelry, Hawaii's widest selection of fine jewelry
- Hawaiian jewelry, Wyland & other marine life charms
- Black Tahitian, South Sea pearls, diamonds and other fine gems
- All jewelry is backed with a full lifetime guarantee
- The original black coral jeweler – Hawaii's official state gemstone

3 ISLAND PEARLS *Fine Jewelry Since 1958 – A Maui Divers Company*

- Located in the Whalers Village Shopping Center
- Ask about the free Hawaiian treasure chest key
- Enjoy the elegant array of black Tahitian and South Sea pearls
- Luxurious strands and unique diamond jewelry designs
- Take home memories of Hawaii that last a lifetime
- All jewelry is backed with a full lifetime guarantee
- Open daily 9am – 10pm

4 a-e NA HOKU *Fine Jewelers Since 1924*

- Unbelievable selection of Hawaiian and island lifestyle jewelry
- All pieces are designed to accent individuality, taste and style
- Beautiful Tahitian, Akoya and freshwater pearls
- Magnificent colored gems, diamonds and heirloom jewelry
- Beautifully hand-engraved floral and sea life designs
- Featured designs by Kabana, Wylan and Steven Douglas
- Front Street (2 locations): Whalers Village, Cannery Mall, Kahului

5 a-d PEARL FACTORY *Hawaii's Original "Pearl-in-the-Oyster"*

- All of our pearls come from genuine saltwater cultured oysters
- Assure the quality you expect; select your own oyster
- Watch as the oyster is opened and a beautiful pearl is revealed
- Choose from over 135 settings to create your own exquisite piece
- Something special in the style and price range suitable for all
- 14kt. gold jewelry designs are made locally in Honolulu
- Two Front St. locations, in Cannery Mall and Whalers Village kiosk





Maui



6 a,b HILO HATTIE

Hawaiian Apparel, Gifts and Souvenirs

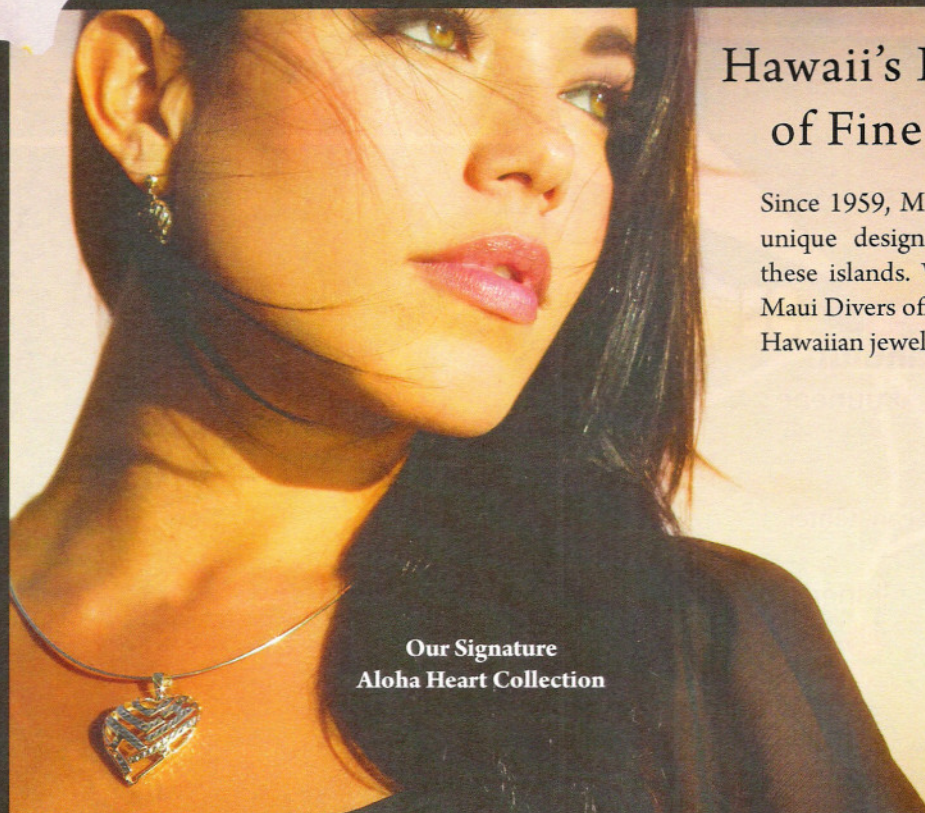
- Voted the place to purchase "Hawaiian wear" for 10 years
- Large selection of Hawaiian gifts, souvenirs, T-shirts & gourmet foods
- Hawaiian wear for men, women and children
- Mailing service available in both stores
- Visit Maui Divers Jewelry located inside both stores
- Take the free shuttle from Kahului to Kihai

7 BUBBA GUMP SHRIMP CO.

Quality Seafood in a Casual, Family & Friendly Environment

- Restaurant theme is based on the movie "Forrest Gump"
- Oceanfront dining with the best views of the island
- A fun, casual restaurant with down-home warmth





Hawaii's Largest Selection of Fine Island Jewelry

Since 1959, Maui Divers Jewelry has created unique designs inspired by the beauty of these islands. Whatever your personal style, Maui Divers offers Hawaii's finest selection of Hawaiian jewelry, island pearls and more.

Our Signature
Aloha Heart Collection



Maui Divers Jewelry
Island inspired, forever yours.

Over 50 locations including
all Hilo Hattie stores
800-253-6016 mauidivers.com

**Complimentary Sterling Silver Palm Tree Pendant and Chain
with any \$50 minimum purchase***

*Present this port map at time of purchase. Cannot be combined
with other discounts or special offers. Subject to change and availability.
Tax not included. Restrictions apply.



FREE SHUTTLE SERVICE FROM ALL PIERS

OAHU
Maui Divers Jewelry Design Center
Ala Moana Center
International Marketplace
Hilo Hattie Nimitz Highway

MAUI
Queen Kaahumanu Center, Kaanapali
Pioneer Inn, Lahaina
Whalers Village, Kaanapali
Hilo Hattie Lahaina

KAUAI
Anchor Cove Shopping Center
Hilo Hattie Lihue

BIG ISLAND
Hilo Hattie Hilo



Shop with confidence at each of the recommended stores. All stores listed on the map have paid a promotional fee and given Disney Cruise Line guests a Buyer's Guarantee valid for 60 days after purchase. This guarantee is valid for repair or exchange. Please note the following conditions that apply to the guarantee: Guest negligence or buyer's regret is excluded. Only appraisals from independent, accredited graduate gemologists not affiliated with any retail jeweler will be considered. Price paid for merchandise or verbal claims or agreements between merchant and guest will not be grounds for returns. Electronics and watches requiring service must be returned by the consumer to the respective manufacturer. All purchases, including fragile items, must be checked before leaving the store. Do not mail merchandise without prior authorization. Guests are responsible for postage and appraisal costs. The PPI Group, 4517 NW 31st Avenue Ft. Lauderdale, FL 33309-3403, Customer Service: 1.888.774.4768 or 954.377.7777, email: Service@ppiigroup.com.

© PPI 2012 Maui Disney 04/27/2012