

HILO SHOPPING MAP

ALL ASHORE!

An Overview of Hilo

Hilo is the oldest port of entry with a population of 38,000, and is the second largest city in Hawaii situated on the east coast of the Big Island (The Orchid Island). The Big Island is just that – BIG. It accounts for 63% of the state (about 4,000 square miles). Shipping and fishing business is significant, plus there's a campus for the University of Hawaii in Hilo.

It is believed this was the first island to be inhabited by Polynesian voyagers from the Marquesas Islands, around 700 A.D. Hilo is America's wettest city, over 120 inches annually, and holds the record for the most rain in 24 hours (22.3 inches), set in 1979.

Hilo is the gateway to Hawaii Volcanoes National Park, America's most exciting national park, where Kilauea Volcano has erupted every day since 1983. Its name means "The Spewing." The volcanic peak of Mauna Kea is 31,796 feet tall from the ocean floor, 2,700 feet taller than Mt. Everest. Near its top is a Lake Waiua, highest in the state and the third highest in the USA. The island's other major peak, Mauna Loa (Long Mountain) is the largest active volcano comprised of 10,000 cubic miles of iron-hard lava - the densest and most massive mountain on earth. Hawaii's largest "small" town lies at the feet of three volcanoes, Mauna Kea, the world's tallest; Mauna Loa, the world's most voluminous; and Kilauea, the world's most active volcano. Kilauea is Hawaii's biggest visitor attraction and is located due south in Hawaii Volcanoes National Park.

Downtown features a collection of restored Victorian style buildings overlooking a half-moon bay. Hilo's centuries-old wooden storefronts house surprisingly sophisticated galleries, shops, restaurants, and cultural sites—all of which you can explore on foot. This sleepy town looks out towards beautiful Hilo Bay and is filled with a genuine aloha spirit.

Visit the Pacific Tsunami Museum to learn about the cataclysmic natural events that struck Hilo here in the historic First Hawaiian Bank Building on Kamehameha Avenue. Hilo twice survived tsunamis and as a result, the town was built further inland with a park as a buffer. Here you can see photographs of the 1946 and 1960 disasters and listen to recordings of eyewitness accounts.

Hilo is home to the University of Hawaii at Hilo, as well as the Merrie Monarch Festival, a week-long celebration of ancient and modern hula, which takes place annually after Easter. It is also home to the Mauna Loa Macadamia Nut Corporation, one of the world's leading producers of macadamia nuts.

Hawaii's constitution was drafted in 1950 and became effective with statehood in 1959.

STORE#

2
a,b

MAUI DIVERS JEWELRY

Located inside Hilo Hattie & Mauna
Loa Macadamia Nut Center

STORE#

4

HILO HATTIE

Best Hawaiian Store for all of your souvenirs!

STOP BY THE SHOPPING DESK...

with any questions you might have
regarding our exciting ports of call!

Hilo at a Glance

Capital: Honolulu

Location: Town looks out Hilo Bay

Transportation: Taxi, tour buses, shuttle, city buses available

Currency: U.S. Dollar

Language: English and Hawaiian

Population: Approximately 173,057

Banking: Bank of Hawaii – 120 Pauahi Street

Post Office: 1299 Kekuanaoa Street

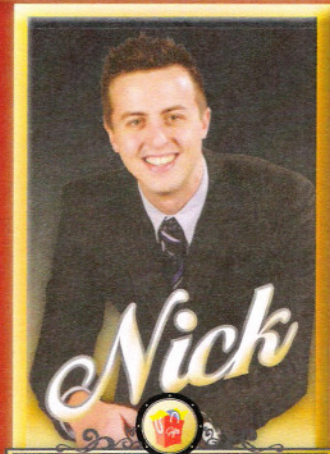
Airport: Hilo International – 10 minute taxi ride from the cruise terminal

Port Adventures:

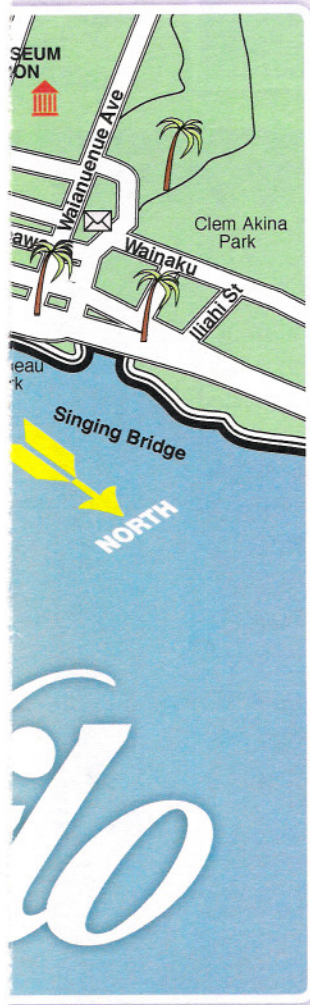
Check your ticket for the correct meeting time and location for your tour. Your Port Adventures Team will direct you to transportation. Taxi service is available outside the cruise ship terminal.

In Case of Emergency:

Inchcape Shipping Services
Foreign Trade Zone #9, 521 Ala Moana Blvd,
Ste 2256, Honolulu, HI 96813
Tel: (808) 599-8604
Fax: (808) 529-8603
Cell: (808) 478-9243
E-mail: iss.honolulu@iss-shipping.com



SHOPPING GUIDE



2a,b MAUI DIVERS JEWELRY

Lifetime Guarantee Since 1958

- Visit Maui Divers for Hawaii's widest selection of fine jewelry
- Maui Divers is the largest jewelry designer in Hawaii
- Black Tahitian & South Sea pearls, diamonds and other fine gems
- The original black coral jeweler – Hawaii's official state gemstone
- Hawaiian jewelry, Wyland and other marine life charms
- All jewelry is backed with a full lifetime guarantee
- Located inside Hilo Hattie & Mauna Loa Macadamia Nut Center
- Take the free Hilo Hattie shuttle or the Mauna Loa tour
- Win prizes – ask for your free treasure chest key at the Hilo Hattie location

3 MAUNA LOA MACADAMIA NUT VISITOR CENTER

Macadamia Nuts & Souvenirs

- The island of Hawaii is ideal for growing macadamia nuts
- Rich, volcanic soil, rainfall and sun make the most delicious nut
- Originally from Australia, brought here in the 1870s as a plant
- View processing, chocolate candy production and cookie-dipping
- Enjoy free samples of flavorful macadamia and shortbread cookies
- Browse the gift shop for a selection of macadamia gifts
- Take a gift home as a perfect reminder of Hawaii
- Check the Shore Excursion Desk for the tours to the center

4 HILO HATTIE

Hawaiian Gifts, Souvenirs, and Prints

- "Best Hawaiian Store in Hawaii" by the Hawaii Convention Bureau
- Selection of Hawaiian gifts, souvenirs, fashions and T-shirts
- Gourmet foods, island jewelry – official retailer of "Aloha Festivals"
- Manufacturer's direct prices on thousands of Hawaiian products
- Features many Hawaiian artists' prints that are suitable for framing
- Visit Maui Divers Jewelry located inside this store
- Take the free shuttle from the ship's pier

DON'T FORGET YOUR

- ✓ FREE Diamond Charm Bracelet Card
- ✓ Photo ID & Key to the World Card
- ✓ Cash and/or Credit Cards
- ✓ VIP Cards

PORT ADVENTURES:

Check your ticket for the correct meeting time & location for your tour. Your Port Adventures Team will direct you to transportation.

SHOPPING GUIDE



Puerto Vallarta • Guadalajara • Leon • Tampico

Merida • Cancun

Belize

Belmopan

Honduras

Tegucigalpa

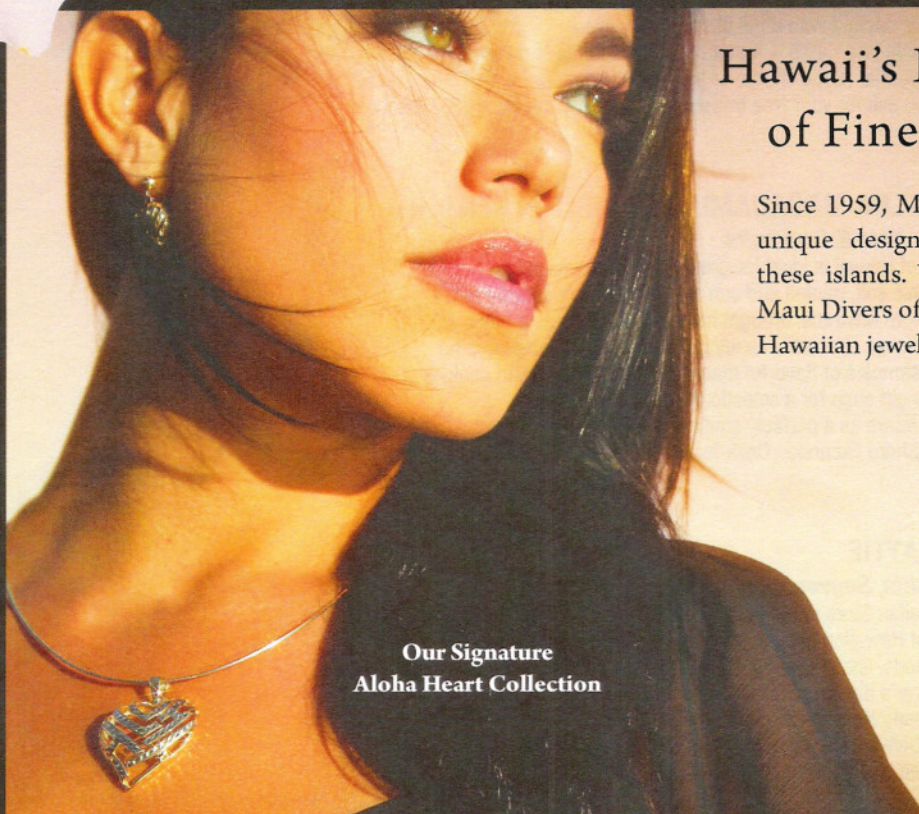
San Salvador

Nicaragua

Managua

San Jose

Costa Rica



Our Signature
Aloha Heart Collection

Hawaii's Largest Selection of Fine Island Jewelry

Since 1959, Maui Divers Jewelry has created unique designs inspired by the beauty of these islands. Whatever your personal style, Maui Divers offers Hawaii's finest selection of Hawaiian jewelry, island pearls and more.



Maui Divers Jewelry
Island inspired, forever yours.

Over 50 locations including
all Hilo Hattie stores
800-253-6016 mauidivers.com

**Complimentary Sterling Silver Palm Tree Pendant and Chain
with any \$50 minimum purchase***

*Present this port map at time of purchase. Cannot be combined
with other discounts or special offers. Subject to change and availability.
Tax not included. Restrictions apply.



FREE SHUTTLE SERVICE FROM ALL PIERS

OAHU

Maui Divers Jewelry Design Center
Ala Moana Center
International Marketplace
Hilo Hattie Nimitz Highway

MAUI

Queen Kaahumanu Center, Kaanapali
Pioneer Inn, Lahaina
Whalers Village, Kaanapali
Hilo Hattie Lahaina

KAUAI

Anchor Cove Shopping Center
Hilo Hattie Lihue

BIG ISLAND

Hilo Hattie Hilo



Shop with confidence at each of the recommended stores. All stores listed on the map have paid a promotional fee and given Disney Cruise Line guests a Buyer's Guarantee valid for 60 days after purchase. This guarantee is valid for repair or exchange. Please note the following conditions that apply to the guarantee: Guest negligence or buyer's regret is excluded. Only appraisals from independent, accredited graduate gemologists not affiliated with any retail jeweler will be considered. Price paid for merchandise or verbal claims or agreements between merchant and guest will not be grounds for returns. Electronics and watches requiring service must be returned by the consumer to the respective manufacturer. All purchases, including fragile items, must be checked before leaving the store. Do not mail merchandise without prior authorization. Guests are responsible for postage and appraisal costs. The PPI Group, 4517 NW 31st Avenue Ft. Lauderdale, FL 33309-3403. Customer Service: 1.888.774.4768 or 954.377.7777, email: Service@ppigroup.com.

© PPI 2012 Hilo Disney 04/27/2012