


PERSONAL NAVIGATOR



FRIDAY, APRIL 19, 2013

CASTAWAY CAY

Sunrise 6:42 a.m. Sunset: 7:35 p.m.
 Evening Attire: Cruise Casual
 All Ashore: 9:30 a.m.
 All Aboard: 4:30 p.m.

Friday: Partly Sunny High: 79°F/26°C
 Saturday: Cloudy High: 73°F/23°C



Join us tonight as we celebrate our magical voyage, inspired by the words and wisdom of the man himself, Walt Disney; featuring the Walt Disney Theatre cast, World Famous Disney Characters and the Comedy and Ventriloquism of Taylor Mason.

WALT DISNEY THEATRE
 Deck 3 & 4, Forward
 6:15 p.m. & 8:30 p.m.



Assistance available at the entrance to the Walt Disney Theatre 30 minutes prior to show time.

Disney's Castaway Cay

Reserved exclusively for Guests on Disney Cruise Line Bahamian and Caribbean cruise vacations, Castaway Cay is Disney's private port-of-call paradise. On this island, enjoy tropical leisure activities, such as snorkeling, boating, swimming and sunbathing.

Friendly Reminders


- You will need your Key To The World Card for all transactions on Disney's Castaway Cay except for the Post Office.
- For your convenience, beach towels are available as you leave the ship; please return them at the gangway at the end of your day.
- Serenity Bay is reserved for Guests 18 and older.
- A limited number of all-terrain wheelchairs across from Scuttle's Cove.
- Due to our commitment to the environment, we ask that seashells, coral and other natural treasures be left undisturbed at Disney's Castaway Cay for all to enjoy.

Debark Talk Broadcast

Your Cruise Director, Brent presents important information including details regarding U.S. Customs and Border Protection procedures. Tune in to Channel 5 of your stateroom TV.

Please place your luggage outside your stateroom between 8:30 - 10:30 p.m.

Thank you in advance for completing your comment card.



Mickey and Minnie, along with the rest of the Walt Disney Characters, invite you to join them in the ship's Atrium. You won't want to miss this very special farewell meet and greet. Bring your cameras! Lobby Atrium, Deck 3, Midship, 4:30 & 10:15 p.m.

Don't Miss:

The Disney Fantasy's Whistle

Will be played at 5:00 p.m. today as we set sail from Castaway Cay
 The Disney Fantasy's whistle, a prominent element of the "Sailing Away" deck party at the start of the cruise, is quite the musical talent. It's able to perform not just the first musical line of "When You Wish Upon a Star" but also the second line of the song ("makes no difference who you are") plus several measures of "Yo Ho (A Pirate's Life for Me)," "It's a Small World," "Be Our Guest," "Hi Diddle Dee Dee (An Actor's Life for Me)" and "A Dream is a Wish."

runDisney: Castaway Cay 5K (12+)

Meet in The Tube, Deck 4, Aft - 9:00 a.m. (Departs at 9:30 a.m.)
 We will depart the ship at 9:30 a.m. and make our way to the Bike Rentals where the run will begin. Runners meet in The Tube, Deck 4, Aft, at 9:00 a.m. (12+)

Battle of the Sexes (18+)

The Tube, Deck 4, Aft - 10:15 p.m.
 Join us and find out who will dominate in this hilarious battle of the sexes.

Visit The Future Cruise Desk Early Today

Please visit the Future Cruise Desk, Deck 4, Midship, as early as possible today. The last day of the cruise tends to get busy in the evening, and we want to be sure you have the opportunity to save 10% on your next cruise, receive up to a \$200 onboard credit, and pay a reduced deposit! Tune to Channel 8 for details.



DINNER MENU
 Animator's Palate: Sea Ya' Real Soon
 Enchanted Garden: Sea Ya' Real Soon
 Royal Court: Sea Ya' Real Soon

DRINK OF THE DAY
 Stingray (Alcoholic)
 Parrot Song (Non Alcoholic)

IMPORTANT NUMBERS
 Fire/Security: 7-3001
 Medical Emergency: 7-3000
 Health Center: 7-1923

FUN FOR ALL AGES HIGHLIGHTS



RUNDISNEY: CASTAWAY CAY 5K (12+)

Meet in *The Tube, Deck 4, Aft* - 9:00 a.m. (Departs at 9:30 a.m.)

We will depart the ship at 9:30 a.m. and make our way to the Bike Rentals where the run will begin. Runners meet in *The Tube, Deck 4, Aft*, at 9:00 a.m. (12+)

ISLAND POWER WALK

Meet on the pier by the showers, - 9:45 a.m.

Join your Cruise Staff for a brisk walk around the island. Meet outside, on the pier by the showers. Meet time is 9:45 a.m. Walk leaves promptly at 10:00 a.m.

CRAB RACES

Island Gazebo 1, - 11:45 a.m.

Island Gazebo 2, - 12:45 p.m.

Watch some local sea creatures make a break for the finish line.

PLAYHOUSE D LOUNGE

D Lounge, Deck 4, Midship - 5:00 p.m.

Calling our youngest of cruisers! Here is a special Playtime that is just for you. Come meet new friends and join in on the fun as your Cruise Staff team takes you through interactive activities made just for you!

JEWISH SABBATH

Outlook, Deck 14, Midship - 5:15 p.m.

A quiet space is reserved for those wishing to conduct their own service.



D TUNES FAM JAM

D Lounge, Deck 4, Midship - 9:45 p.m.

Tune in and rock with us at this family dance party! Spread the word, there will be cool music, new dances, contests and a chance to win great prizes.

FAREWELL KARAOKE

D Lounge, Deck 4, Midship - 10:30 p.m.

Bring along the entire family for one more round of karaoke. This is your last opportunity to grab the mic and sing along to your favorite song.



ADULT ACTIVITY HIGHLIGHTS

SENSES SPA FITNESS CLASSES & SEMINARS

Sunrise Stretch - Donald's Pool - 7:00 a.m.

Fab Abs - Donald's Pool - 7:30 a.m.

Body Sculpt Boot Camp (Nom. Fee) - Senses Fitness Center - 8:00 a.m.

Yoga on the Beach - Serenity Bay - 11:00 a.m.

Fab Abs - Senses Fitness Center - 5:00 p.m.



TASTING CLASSES

Beer Tasting (21+) - O'Gills Pub (Nom. Fee, Pre Book) - 4:30 p.m.
Please make reservations for tastings at Guest Services for a nominal fee. Tasting Seminars are only for Guests 21 and Older.

CLUB
18*21

CLUB 18*21 - BASKETBALL FREE THROW
In Da Shade Game Pavilion, - 1:00 p.m.

CLUB 18*21 - FAREWELL
O'Gills Pub, Deck 4, Aft - 10:00 p.m.

LIVE PIANO WITH GAYLA SMITH

La Piazza, Deck 4, Aft - 7:30 p.m. & 10:00 p.m.

Join Gayla Smith as she plays live piano for your listening pleasure.

BATTLE OF THE SEXES

The Tube, Deck 4, Aft - 10:15 p.m.

Join us and find out who will dominate in this hilarious battle of the sexes.

LIVE MUSIC WITH THE SWITCH

La Piazza, Deck 4, Aft - 10:45 p.m.

Join The Switch as they plays live for your listening pleasure.

GOIN' UNDERGROUND WITH DJ BRANDON

The Tube, Deck 4, Aft - 11:15 p.m.

Grab onto the handrails as we take you underground with DJ Brandon.

YOUTH ACTIVITY HIGHLIGHTS

DINE & PLAY

A convenience for families dining at 8:15 p.m., our Youth Activities Counselors will be available at 9:15 p.m. at the entrance of Royal Court, Enchanted Garden and Animator's Palate dining rooms to bring registered children to join the fun in the Youth Activity areas.



Deck 5, Midship (7-1440)
(3-12 years old) 4:30 p.m. - 12:00 mid

TOY STORY BOOT CAMP

7:15 p.m.
Join Corporal Green in our own version of boot camp as we learn how to have fun - The Toy Story way!

CRUISIN' WITH CRUSH

8:45 p.m.
Be sure to check out the Oceaneer Club to see Crush when he stops by!



Deck 5, Midship (7-1445)
(3-12 years old) 4:00 p.m. - 12:00 mid

STITCH'S ADVENTURE SQUAD

7:30 p.m.
Stitch, everyone's favorite alien, is making an appearance to share some of his mischievous games and activities.

SUPER SLOPPY SCIENCE - FLUBBER

8:15 p.m.
Join Professor Make-O-Mess in some of the most extreme experiments you will ever see in the world of Super Sloppy Science!



Deck 13, Midship (7-9743)
(11-14 years old) 4:30 p.m. - 12:00 mid

DISNEY ANIMATION: PERSISTENCE OF VISION

6:00 p.m.
Go behind the scenes at Walt Disney Animation Studios and learn the principles that make animation work, and try your hand at creating your own easy animation demonstration in this fun and fascinating enrichment program.

THAT'S HILARIOUS

9:30 p.m.
Ever wanted to show off your comedy skills? Then be a part of the cast for the crazy improv show "That's Hilarious" and put on a live show for your friends.



Entrance on Deck 4, Forward (7-9418)
(14-17 years old) 4:30 p.m. - 1:00 a.m.

DREAM NOW! SEA HOW! - ANIMAL, SCIENCE AND ENVIRONMENT

3:30 p.m.
Ever wonder how man and animal connect and live in harmony? In an interactive session you will dive into their background, education, mentors, and the dream that lead them on their path toward working with animals.

ZOMBIFIED PREMIERE

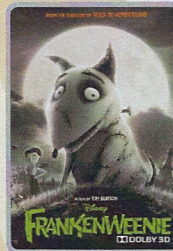
10:15 p.m.
One time only! Come join us in the Buena Vista Theatre for this exclusive big screen premiere of "Zombified," a film featuring the Teens of Vibe as the cast!

BUENA VISTA THEATRE

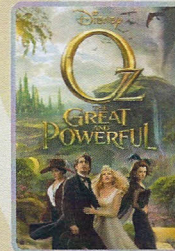
Today's Movies

DOLBY 3D

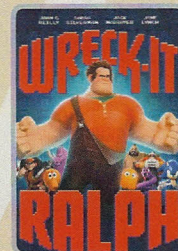
OC - Open Captioning



8:00 a.m.
Duration: 1 hr 24 min
Rating: PG

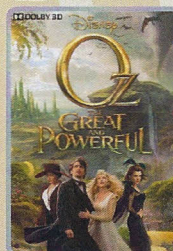


10:00 a.m.
Duration: 2 hr 07 min
Rating: PG

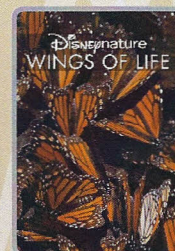


12:30 p.m.
Duration: 1 hr 53 min
Rating: PG

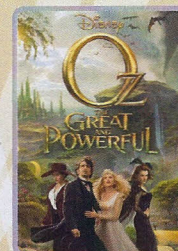
DOLBY 3D



3:00 p.m.
Duration: 2 hr 07 min
Rating: PG



6:00 p.m. & 8:30 p.m.
Duration: 1 hr 17 min
Rating: G



10:45 p.m.
Duration: 2 hr 07 min
Rating: PG



Does your family have what it takes to make their performing dreams come true?

Find out at the Disney Fantasy Family Talent Show, dare to show your family's flair!

D Lounge,
Deck 4, Midship,
7:30 p.m.



ADULT CABARET

Featuring the Comedy & Ventriloquism of Taylor Mason, as he entertains you in this adult exclusive show.

The Tube, (18+)
Deck 4, Aft,
10:45 p.m.

YOUTH ACTIVITIES OPEN HOUSE

Open House is an opportunity for all to come and participate in a variety of exciting activities and free time in the Oceaneer Club, Lab and Edge throughout the cruise. During these times secured programming will still be offered in the other venue for those looking to check their children into care.

Vibe: 8:00 p.m. - 10:15 p.m.
(Flubber and Smoothie hour are activities offered during Open House)

Disney's Oceaneer Club: 9:00 a.m. - 12:00 p.m.
Disney's Oceaneer Lab: 12:00 p.m. - 4:00 pm

MORE TO ENJOY WHILE ONBOARD

THE MUPPETS

There's a Muppet mystery onboard, and Kermit and Pepe need YOU to solve it! Search the ship for clues and use our special detective "badge" to catch the culprit!



Decks 2 & 5, Midship,
9:00 a.m. - 10:00 p.m.



SENSES
SPA & SALON

RECOVERY PACKAGE

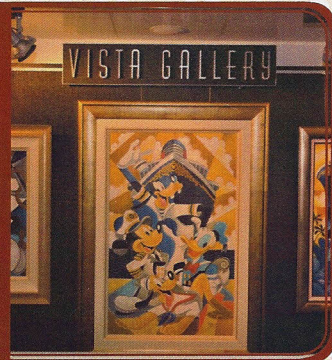
- 20 minute Back, Neck and Shoulder Massage
- 20 minute Scalp Massage
- 20 minute Foot & Ankle Massage

60 minutes total \$99

VISTA GALLERY

Your last opportunity to purchase your Disney art. Shipping available. Stop by the Vista Gallery, Deck 4, Midship, to find out more.

6:00 p.m. - 10:00 p.m.



Shutters

GET THE PICTURE

This is your last chance to purchase your photo CD and prints. Order all your stateroom photos on a CD for \$349.95 and we will include all the prints for ONLY \$50 extra!

All your photos will be available in your stateroom folder and you can view it on our interactive photo kiosks in Shutters Digital on Deck, 4, Midship. Visit Shutters to learn more. Conditions apply

**Please note that photos are available for viewing on our interactive photo kiosks approximately five hours after being taken and are only available for purchase during this cruise.*

Disney CRUISE LINE PORT ADVENTURES

Welcome to Disney's Island Paradise Castaway Cay. Today is the day to relax in an inner tube, snorkel in the Caribbean blue, get up-close and personal to real life stingrays or fly high in the sky on a parasail excursion during a breathtaking aerial adventure. Visit Marge's Barges or one of the rental locations and our friendly team will assist in making any last minute bookings.

PORT ADVENTURES MEETING TIMES AND LOCATIONS

As per ticket	Castaway Ray's Stingray Adventure	Stingray Hut
As per ticket	Castaway Cay Bottom Fishing	Marge's Barges
As per ticket	Glass Bottom Boat	Marge's Barges
As per ticket	Nature Walk and Kayaking	As per ticket
As per ticket	Parasailing	Marge's Barges
As per ticket	Seahorse Catamaran Snorkel Adventure	Marge's Barges
9:30 a.m.	Teen Wild Side	Vibe
As per ticket	Watercraft Ski Adventure	Boat Beach

CASTAWAY CAY ISLAND RENTALS

Bicycles	9:30 a.m. - 4:00 p.m.	Near Cookies Too / Windsock
Boats	9:30 a.m. - 4:00 p.m.	Boat Beach
Snorkeling Gear	9:30 a.m. - 3:30 p.m.	Gil's Fins and Boats / Flippers and Floats
Float	9:30 a.m. - 3:30 p.m.	Gil's Fins and Boats / Flippers and Floats
Getaway Package	9:30 a.m. - 3:30 p.m.	Gil's Fins and Boats / Flippers and Floats

SHOPPING

SHOPPING IN PARADISE

Disney's Castaway Cay has two shopping locations with Disney's Castaway Cay merchandise. This is your chance to take home a memory of our private island!

HELPFUL SHOPPING TIP

While shopping onboard, you may collect your items from all three stores before proceeding to checkout at any register. No need to have to wait in line in each store to pay for your items separately! Whitecaps, Sea Treasures, and Mickey's Mainsail, Deck 3, Forward.

BLUE GALLERY ART

Don't forget to stop by the Vista Gallery Deck 4, Midship to check out the Blue Gallery art pieces, and meet our Guest Artist David Schluss.

FRAGRANCE OF THE DAY

Stop by Whitecaps to test our selected fragrance today! Deck 3, Forward.

FANTASY LOGO

Bring home a memory of your first sailing on the Disney Fantasy. Choose from T-shirts, hats, sweatshirts, mugs, and scrapbooks. Deck 3, Forward.

GREAT OFFERS ONBOARD

Get a Disney Cruise Line duffel for \$17.95 when you spend \$30 or more and a Disney Cruise Line towel for \$14.95 when you spend \$25 or more. Promotion available in Mickey's Mainsail, Sea Treasures, and Whitecaps. Shops are located Deck 3, Forward.

BUY ONE, GET ONE 40% OFF

all! all fashionistas! For those of you who like a little flair in your casual wear, check out the new Disney Cruise Line® Bling Tees available at Sea Treasures for \$25 each, or 2 for \$40. Deck 3, Forward.

VISTA GALLERY

Toy Story, Monster's Inc., Finding Nemo, Up - what's your favorite Disney-Pixar film? You have a chance to purchase a piece of Disney-Pixar artwork to take home with you today! Just stop by the Vista Art Gallery to see the Disney-Pixar Collection. Vista Art Gallery, Deck 4, Midship.

Due to port regulations, when the ship is docked, the stores will remain closed.

IMPORTANT INFORMATION

Security Notice

All Guests (including children) who wish to disembark the ship are required to present their Key to the World card at the gangway. A photo ID is also required for those Guests who are 18 years of age or older. Guests under the age of 18 are required to have a Parent, Guardian or other responsible adult sign an authorization form at the time it is given out if they wish to go ashore unaccompanied. Authorization forms are available at the gangways and Guest Services.

Please Note:

Please remember to use plenty of sunscreen and mosquito repellent when venturing ashore.

Cold and Flu Reminder

Please wash hands frequently and thoroughly, particularly before meals. Contact the Health Center by dialing 7-1923, should anyone in your party become ill.

Corridor Quiet Hours

As a courtesy to all our Guests, please recognize quiet hallway hours from 10:00 p.m. til 8:00 a.m.

Inclement Weather

For the safety of all Guests, outdoor events may be changed due to unforeseen weather conditions.

Environmental Message

With Disney's commitment to the Environment, please refrain from throwing anything over the Ship's side. Thank you!

No Reserved Seats Policy

As a courtesy to all our Guests, we kindly advise that the saving of seats is not permitted in the Walt Disney Theatre, and the saving of the sun loungers is not permitted on Deck 11, 12, and 13. Items left unattended will be returned to lost and found at Guest Services, Deck 3 Midship.

Smoking

For the comfort of our guests the following areas are designated as Smoking areas: - Promenade Deck (Deck 4), smoking is permitted Port Side, Aft only from 6:00 p.m. to 6:00 a.m.
- Currents - Deck 13, Forward, Port Side.
- Meridian Bar - Deck 12, Aft, Port Side, outside.
- Smoking is permitted on stateroom verandahs.
Smoking is prohibited inside all guest staterooms. Guests found smoking in their staterooms will be charged a \$250 stateroom recovery fee.

Walt Disney Theatre

Theatrical performances may use artificial fog, strobe lights, pyrotechnics and other special effects. For the safety of our performers and the comfort of those around you, the use of any photography, video recording device or any electronic equipment is prohibited.

Verandah Safety

Please do not leave any combustible materials on your balcony when not present in your stateroom for safety reasons.

Morning	8:30	8:45	9:00	9:15	9:30	9:45	10:00	10:15	10:30	10:45	11:00	11:15	11:30	11:45	12:00	12:15	12:30	12:45	1:00	1:15	1:30																											
FUNNEL VISION	Lilo & Stitch (PG) Funnel Vision						Pixar Shorts (G) Funnel Vision						Finding Nemo (G) Funnel Vision																																			
BUENA VISTA THEATRE	Frankenweenie (PG) Duration: 1 Hour 24 Minutes <Starts at 8:00 a.m.						Oz The Great and Powerful (PG) - With Open Captioning Duration: 2 Hours 07 Minutes						Wreck-It Ralph (PG) Duration: 1 Hour 53 Minutes >2:23 p.m.																																			
CHARACTER			Donald Post Office		Captain Jack Sparrow Marge's Barges		Goofy Rustmore		Donald Post Office		Pluto Scuttles		Chip & Dale Post Office		Minnie Rustmore		Character Dance Party Gazebo 1																															
FUN FOR ALL AGES	runDisney: Castaway Cay 5K (12+) Meet in The Tube (Departs at 9:30 a.m.)						Island Power Walk Meet on the pier by the showers						Volleyball Sports Beach		Crab Races Gazebo 1		Crab Races Gazebo 2		Family Whale Dig Monstro Point																													
	Open House Disney's Oceaneer Club						Open House Disney's Oceaneer Lab																																									
ADULTS	Friends of Bill W. Outlook, Deck 14, Mid						Yoga on the Beach Serenity Bay						Club 18*21 - Basketball Free Throw In Da Shade Game Pavilion																																			
VIBE 14-17 YEARS OLD							Meet At Teen Hideout						Beach Volleyball						Ping Pong						Sand Soccer																							
EDGE 11-14 YEARS OLD							Meet At Marge's Barges						Meet At In Da Shade						Soccer						Lunch at Cookies Too						Pelican Plunge Fun																	
SCUTTLES COVE							Sand Crafts						Water Relays						GAGA Ball						Build a Sand Castle						Lunch						Sand Soccer						Caribbean Beach Party					
OCEANEER LAB 3-12 YEARS OLD																									Open House																							
OCEANEER CLUB 3-12 YEARS OLD	Open House																																															
OUT AND ABOUT																															Family Whale Dig Monstro Point																	

Symbol for activities that will be repeated during the cruise



Youth Activities Open House



Afternoon	1:45	2:00	2:15	2:30	2:45	3:00	3:15	3:30	3:45	4:00	4:15	4:30	4:45	5:00	5:15	5:30	5:45	6:00	6:15	6:30	6:45									
FUNNEL VISION	Toy Story 3 (G) Funnel Vision						Cars 2 (G) Funnel Vision						Up (PG) Funnel Vision																	
BUENA VISTA THEATRE	Wreck-It Ralph (PG) <Starts at 12:30 p.m.						Oz The Great and Powerful (PG) Duration: 2 Hours 07 Minutes						DisneyNature: Wings of Life (G) Duration: 1 Hour 17 Minutes >7:17 p.m.																	
CHARACTER			Chip & Dale Gangway		Cpt. Hook Gangway		Goofy Gangway								Donald Dk 4, Mid		Tiana Lobby Atrium													
FUN FOR ALL AGES	Open House Disney's Oceaneer Lab												Playhouse D Lounge D Lounge		Disney Vacation Club Group Preview The Tube		Jewish Sabbath Outlook, Deck 14, Mid													
	Live Guitar with John Kevish Island Gazebo 1						Live Music with The Switch Deck 12, Forward						Live Music with The Switch Deck 12, Forward		Live Piano with Gayla Smith Lobby Atrium															
ADULTS													Fab Abs Senses Fitness Center																	
													Beer Tasting (21+) O'Gills Pub (Nom. Fee, Pre Book)																	
VIBE 14-17 YEARS OLD	Soccer		Capture the Flag				Dream Now! Sea How! - Animal, Science and Environment						Chillin' in Vibe				Girls Chill													
EDGE 11-14 YEARS OLD	Pelican Plunge		Hangin' at Teen Hideout				Vibe Sun Deck Party						Catch & Push		Ball Games				Disney Animation: Persistence of Vision						Four Square					
SCUTTLES COVE	Caribbean Beach Party		Vacation Crafts																											
OCEANEER LAB 3-12 YEARS OLD	Open House						Open for Secured Activities						Youth Dinner						Parachute Games		Anyone Can Cook									
OCEANEER CLUB 3-12 YEARS OLD																			Wii Challenge											
OUT AND ABOUT	Family Whale Dig Monstro Pt.																													

Fold along the dotted lines and take me with you so you don't miss any of the fun!

FOLD

Evening	7:00	7:15	7:30	7:45	8:00	8:15	8:30	8:45	9:00	9:15	9:30	9:45	10:00	10:15	10:30	10:45	11:00	11:15	11:30	11:45	12:00			
FUNNEL VISION	Old Dogs (PG) Funnel Vision						The Muppets (PG) Funnel Vision																	
BUENA VISTA THEATRE	DisneyNature: Wings of Life (G) Duration: 1 Hour 17 Minutes						Oz The Great and Powerful (PG) Duration: 2 Hours 07 Minutes >12:52 a.m.																	
CHARACTER	Goofy Preludes		Minnie Dk 4, Mid		Snow White Preludes																			
FUN FOR ALL AGES	Family Dance Party The Tube												Farewell Karaoke D Lounge		Live Music with June Gypsies Lobby Atrium				Live Music with June Gypsies Lobby Atrium					
ADULTS	Live Guitar with John Kevish O'Gills Pub						Battle of the Sexes The Tube						Adult Cabaret: Taylor Mason Ventriloquist The Tube		Goin' Underground with DJ Brandon The Tube									
VIBE 14-17 YEARS OLD	Create A Memory Book						Flubber		Smoothie Time				Open House		Zombified Premiere		Final Farewell							
EDGE 11-14 YEARS OLD	Four Square		Gender Wars Final				Create A Memory Book				That's Hilarious		Know Your Counselor?		Dance Party									
OCEANEER LAB 3-12 YEARS OLD	Stitch's Adventure Squad		Super Sloppy Science - Flubber				Bingo		Magic Show		GAGA Ball		Magic Playfloor		Dance Party									
OCEANEER CLUB 3-12 YEARS OLD	Create a Postcard		Dance Party				Cruisin' with Crush		Journey to Neverland		Ball Games		Movie Time											
OUT AND ABOUT	Mini Golf Tournament Goofy Golf																							

JUMP UP! SERIES



IN THE SPOTLIGHT SERIES



CREATE & INVENT SERIES



CLUBHOUSE SERIES

STORYBOOK SERIES

FRIDAY, APRIL 19, 2013 - CASTAWAY CAY

BUENA VISTA THEATRE



8:00 a.m. Duration: 1 hr 24 min Rating: PG	10:00 a.m. Duration: 2 hr 07 min Rating: PG	12:30 p.m. Duration: 1 hr 53 min Rating: PG	3:00 p.m. Duration: 2 hr 07 min Rating: PG	6:00 p.m. & Duration: 8:30 p.m. Rating: PG	10:45 p.m. Duration: 2 hr 07 min Rating: PG
--	---	---	--	--	---

GOOFY'S SPORTS

Digital Simulators

Sports Simulator

(Basketball, Baseball, Football, Hockey, or Soccer) \$12 / half hr, \$20 / hr.

Golf Simulator

\$25 / half hr, \$45 / hr

Reservations can be made at the Port Adventures Desk, Deck 5, Midship or at the Simulators, Deck 13, Aft.

Character Appearances

DONALD DUCK

Post Office
9:30 a.m. & 10:30 a.m.
Deck 4, Balcony - 5:30 p.m.

PLUTO

Mt. Rustmore - 9:45 a.m.
Scuttle's Cove - 10:45 a.m.

CAPTAIN JACK SPARROW

Marge's Barges - 9:45 a.m.
Pelican Point Tram Stop
11:00 a.m.

MICKEY MOUSE

Scuttle's Cove - 9:45 a.m.
Mt. Rustmore - 10:45 a.m.
Deck 4, Balcony - 8:00 p.m.

CHIP & DALE

Post Office
10:00 a.m. & 11:00 a.m.
Gangway - 2:30 p.m.

GOOFY

Mt. Rustmore - 10:15 a.m.
Scuttle's Cove - 11:15 a.m.
Gangway - 3:30 p.m.
Preludes - 7:15 p.m.

MINNIE MOUSE

Scuttle's Cove - 10:15 a.m.
Mt. Rustmore - 11:15 a.m.
Deck 4, Balcony - 7:30 p.m.

CHARACTER DANCE PARTY

Island Gazebo 1 - 12:15 p.m.

CAPTAIN HOOK

Gangway - 3:00 p.m.

SEA YA REAL SOON

Lobby Atrium
4:30 p.m. & 10:15 p.m.

PRINCESS TIANA

Lobby Atrium - 5:45 p.m.

SNOW WHITE

Preludes - 7:45 p.m.

Don't forget your Camera to capture those magical moments!
For details of daily Disney character appearances, refer to the character line in your Navigator Grid.

YOUTH ACTIVITIES THEMED EXPERIENCES

CLUBHOUSE SERIES
focuses on movement and features content which appeals to younger children.

JUMP UP! SERIES
includes large ground games & movement-oriented activities.

IN THE SPOTLIGHT SERIES
focuses on children's stage presence with lots of activities and enthusiasm.

STORYBOOK SERIES
is designed with a strong connection to the Disney classic stories.

CREATE & INVENT SERIES
will have a tactile focus allowing children to create and admire their work.

SOLVE IT! SERIES
are less active, but will challenge children with problem/solutions-based activities.

YOUTH ACTIVITIES OPEN HOUSE

A non-secured program with activities for families, adults and children of all ages to enjoy together.

SHIP DIRECTORY

YOUTH ACTIVITIES

DISNEY'S OCEANEER CLUB	DECK 5, MID	4:30 PM - 12:00 MID
DISNEY'S OCEANEER LAB	DECK 5, MID	4:00 PM - 12:00 MID
EDGE	DECK 13, MID	4:30 PM - 12:00 MID
VIBE	DECK 4, FWD	4:30 PM - 1:00 AM
IT'S A SMALL WORLD NURSERY	DECK 5, MID	9:00 AM - 11:00 PM

RECREATION

AQUADUCK	DECK 12, MID	1:00 PM - 10:00 PM
AQUALAB	DECK 12, AFT	1:00 PM - 7:00 PM
DONALD'S POOL	DECK 11, MID	6:00 AM - 12:00 MID
GOLF/SPORTS SIMULATORS	DECK 13, AFT	1:00 PM - 6:00 PM
GOOFY GOLF	DECK 13, AFT	8:00 AM - 10:00 PM
GOOFY'S SPORTS DECK	DECK 13, AFT	8:00 AM - 6:00 PM
MARGE'S BARGES	CASTAWAY CAY	9:00 AM - 3:30 PM
MICKEY'S POOL	DECK 11, MID	6:00 AM - 11:00 PM
MICKEY'S SLIDE	DECK 11, MID	10:00 AM - 6:00 PM
MIDSHIP DETECTIVE AGENCY	DECK 2 & 5, MID	9:00 AM - 10:00 PM
NEMO'S REEF	DECK 11, MID	10:00 AM - 6:00 PM
PORT ADVENTURES DESK	DECK 5, MID	
QUIET COVE POOL	DECK 11, FWD	6:00 AM - 10:00 PM
SATELLITE FALLS	DECK 13, FWD	6:00 AM - 6:00 PM
SENSES FITNESS CENTER	DECK 11, FWD	6:30 AM - 10:00 PM

GENERAL INFORMATION

ARR-CADE	DECK 11, AFT	24 HOURS
DISNEY VACATION CLUB	DECK 4, MID	6:00 PM - 10:00 PM
FUTURE CRUISE SALES DESK	DECK 4, MID	9:00 AM - 10:00 AM 4:00 PM - 6:00 PM 7:30 PM - 10:00 PM
GUEST SERVICES	DECK 3, MID	24 HOURS
MEDICAL HEALTH CENTER	DECK 1, FWD	9:30 AM - 11:00 AM 4:30 PM - 7:00 PM
PORT & SHOPPING DESK	DECK 4, MID	
PRELUDES	DECK 3, FWD	5:45 PM - 6:30 PM 8:00 PM - 8:45 PM
SENSES SPA AND SALON	DECK 11, FWD	8:00 AM - 10:00 PM
SHUTTERS PHOTO GALLERY	DECK 4, MID	3:30 PM - 11:30 PM
SHUTTERS DIGITAL	DECK 4, MID	12:00 MID - 11:30 PM

SHOPPING

BIBBIDI BOBBIDI BOUTIQUE	DECK 5, MID	9:00 AM - 11:00 AM 3:30 PM - 9:00 PM
MICKEY'S MAINSAIL	DECK 3, FWD	5:30 PM - 11:00 PM
QUACKS	DECK 11, MID	
SEA TREASURES	DECK 3, FWD	5:30 PM - 11:00 PM
VISTA GALLERY	DECK 4, MID	5:30 PM - 10:00 PM
WHITECAPS	DECK 3, FWD	5:30 PM - 11:00 PM
WHOZITS & WHATZITS	DECK 11, MID	

DINNER MENU	Animator's Palate: Sea Ya Real Soon	DRINK OF THE DAY	Stingray (Alcoholic)	WEATHER FORECAST	Friday: Partly Sunny
	Enchanted Garden: Sea Ya Real Soon		Parrot Song (Non Alcoholic)		High: 79°F/26°C
	Royal Court: Sea Ya Real Soon				Saturday: Cloudy
	Dining Times: 5:45 p.m. & 8:15 p.m.				High: 73°F/23°C

Evening Attire: Cruise Casual

DINING & LOUNGES

BREAKFAST

CABANAS CONTINENTAL	DECK 11, AFT	7:00 AM - 7:30 AM
CABANAS	DECK 11, AFT	7:30 AM - 10:45 AM
ENCHANTED GARDEN	DECK 2, MID	8:30 AM - 10:30 AM
ROYAL COURT	DECK 3, MID	8:00 AM - 9:30 AM

LUNCH

CABANAS	DECK 11, AFT	12:00 PM - 1:30 PM
COOKIES	CASTAWAY CAY	11:30 AM - 2:00 PM
COOKIES TOO	CASTAWAY CAY	11:30 AM - 2:00 PM
FILLMORE'S FAVORITES	DECK 11, MID	12:00 PM - 6:00 PM
LUIGI'S PIZZA	DECK 11, MID	12:00 PM - 6:00 PM
TOW MATER'S GRILL	DECK 11, MID	12:00 PM - 10:00 PM

DINNER

ANIMATOR'S PALATE	DECK 3, AFT	5:45 PM & 8:15 PM
ENCHANTED GARDEN	DECK 2, MID	5:45 PM & 8:15 PM
ROYAL COURT	DECK 3, MID	5:45 PM & 8:15 PM
PALO (18+) (RESERVATIONS REQ. & NON. FEE APPLIES)	DECK 12, AFT	6:00 PM - 8:30 PM
REMY (18+) (RESERVATIONS REQ. & NON. FEE APPLIES)	DECK 12, AFT	6:00 PM - 8:30 PM

LATE NIGHT SNACKS

LA PIAZZA (18+)	DECK 4, AFT	10:45 PM - 11:45 PM
LUIGI'S PIZZA	DECK 11, MID	9:30 PM - 12:00 MID

ADDED FEATURES

BEVERAGE STATION	DECK 11, MID	24 HOURS
EYE SCREAM	DECK 11, MID	11:00 AM - 11:00 PM
ROOM SERVICE	DIAL 0	CLOSES AT 1:30 AM

ENTERTAINMENT - LOUNGES - BARS

Adults must be 21 and older to consume alcoholic beverages.

BON VOYAGE	DECK 3, MID	4:00 PM - 11:00 PM
COVE BAR (18+)	DECK 11, FWD	11:30 AM - 10:30 PM
COVE CAFE (18+)	DECK 11, FWD	7:00 AM - 12:00 MID
CURRENTS (18+)	DECK 13, FWD	12:00 PM - 11:00 PM
D LOUNGE	DECK 4, MID	SHOWTIMES
FROZONE TREATS	DECK 11, MID	11:00 AM - 10:30 PM
LA PIAZZA	DECK 4, AFT	4:00 PM - 12:00 MID
MERIDIAN (18+)	DECK 12, AFT	5:00 PM - 12:00 MID
O'GILLS PUB (18+ AFTER 9:00 PM)	DECK 4, AFT	4:00 PM - 12:00 MID
OOH LA LA (18+)	DECK 4, AFT	5:00 PM - 12:00 MID
OUTLOOK	DECK 14, MID	SUNSET TIMES
SKYLINE (18+)	DECK 4, AFT	5:00 PM - 12:00 MID
THE TUBE (18+)	DECK 4, AFT	10:00 PM - 1:00 AM
VISTA CAFE	DECK 4, MID	7:30 AM - 11:00 PM
WAVES	DECK 12, AFT	2:30 PM - 6:00 PM

CASTAWAY CAY BARS

CONCHED OUT BAR	CASTAWAY CAY	9:00 AM - 4:00 PM
CASTAWAY AIR BAR	CASTAWAY CAY	9:00 AM - 3:30 PM
HEADS UP BAR	CASTAWAY CAY	9:00 AM - 3:30 PM
SAND BAR	CASTAWAY CAY	9:00 AM - 4:00 PM

Consumers who order raw or partially cooked, ready-to-eat food of animal origin, are hereby informed that the food is not sufficiently cooked to ensure its safety.

IMPORTANT NUMBERS

Fire/Security:	7-3001
Medical EMERGENCY:	7-3000
Health Center:	7-1923

All Ashore:
Approx. 9:30 a.m.

All Aboard:
4:30 p.m.