

PERSONAL NAVIGATOR

WEDNESDAY, MAY 23, 2012

Sunrise: 5:43 a.m. Sunset: 6:49 p.m.
 Evening Attire: Cruise Casual
 All Ashore: 7:45 a.m.
 All Aboard: 4:00 p.m.


Wednesday: Partly Cloudy High: 82°F/28°C
 Thursday: Overcast High: 78°F/26°C

ST. THOMAS

the Magic DAVE SHOW

WALT DISNEY THEATRE
 Decks 3 & 4, Forward
 6:15 PM & 8:30 PM



 Assistance available at the entrance to the Walt Disney Theatre 30 minutes prior to show time

St. Thomas Port Information

Once largely occupied by Dutch-owned sugar cane plantations and pirates of the Caribbean, St. Thomas and St. John of the U.S. Virgin Islands are some of the most popular tropical tourist destinations in the world. A destination that boasts so many sites for sport, relaxation and leisure has a culture that is still influenced in ways by its agricultural and native past.


Two-thirds of the island of St. John, a short ferry ride from St. Thomas, is a National Park. Not only is this island the most beautiful it is also the most serene, surrounded by shimmering bays and beaches.

A place so celebrated today for its pristine tranquility and peaceful way of life was—for 150 years—a notorious pirate post before the islands were conquered by the Dutch West Indian Company.

The islands have seen a steady rise in tourism since, and today, there is an entire world of leisure and adventure to explore on St. Thomas and St. John.

DOCKING

The ship docks at Havensight Mall Dock, which is also known as West Indian Company Dock.



Get ready for a jammin', slammin', splash splashin' good time at the new Disney Channel Poolside Jam Fest at Sea! Imagine all of your favorite Disney Channel music stars coming together for an afternoon of contests, great music, and hot video's all under the Caribbean sun!

4:15 p.m.,
 Deck Stage,
 Deck 11, Midship

Don't Miss:

Disney Animation: Persistence of Vision
D Lounge, Deck 4, Midship - 4:00 p.m.

Go behind the scenes at Walt Disney Animation Studios and learn the principles that make animation work, and try your hand at creating your own easy animation demonstration in this fun and fascinating enrichment program.

Art of The Theme Show Tour

Meet at Meridian (18+), Deck 12, Aft - 4:30 p.m.

Join us on a guided ship tour and discover the key ingredients that makes the Disney Fantasy cruise ship one-of-a-kind.

Viva Europa

Europa (18+), Deck 4, Aft - 10:15 p.m.

Join us as we give you an entertaining taste of Europe. From Italy, France, to Ireland and London and best of all you won't even have to leave the ship!

Saludos Amigos Fiesta

D Lounge, Deck 4, Midship - 10:15 p.m.

Bring the family out to this interactive dance party featuring The Three Amigos. We will party with Donald Duck, learn Salsa, Merengue and have a Latin good time!

Disney Cruise Line

PORT ADVENTURES 

IMPORTANT INFORMATION

Please check your tour tickets for meeting times and locations.
 Visit the Port Adventures Desk, Deck 5, Midship for any questions.

DINNER MENU Animator's Palate : Prince and Princess Menu
 Enchanted Garden : Prince and Princess Menu
 Royal Court : Prince and Princess Menu

DRINK OF THE DAY Sunken Treasure (Alcoholic)
 Princess Delight (Non Alcoholic)

IMPORTANT NUMBERS
 Fire/Security: 7-3001
 Medical Emergency: 7-3000
 Health Center: 7-1923

FAMILY ACTIVITY HIGHLIGHTS

CRUISIN' FOR TRIVIA

D Lounge, Deck 4, Midship - 3:15 p.m.

Test your general knowledge with your Cruise Staff in this fun trivia.

DISNEY ANIMATION: PERSISTENCE OF VISION

D Lounge, Deck 4, Midship - 4:00 p.m.

Go behind the scenes at Walt Disney Animation Studios and learn the principles that make animation work, and try your hand at creating your own easy animation demonstration in this fun and fascinating enrichment program.



JAM FEST AT SEA

Deck Stage, Deck 11, Midship - 4:15 p.m.

Get ready for a jammin', slammin', splish splashin' good time at the new Disney Channel Poolside Jam Fest at Sea! Imagine all of your favorite Disney Channel music stars coming together for an afternoon of contests, great music, and hot video's all under the Caribbean sun!

OFFICER PIN TRADING

Preludes, Deck 3, Forward - 7:30 p.m.

Come trade pins with the officers of the Disney Fantasy.

DISNEY TRIVIA

D Lounge, Deck 4, Midship - 9:45 p.m.

Navigate your way through another round of questions to test how much you really know about Disney.



SALUDOS AMIGOS FIESTA

D Lounge, Deck 4, Midship - 10:15 p.m.

Bring the family out to this interactive dance party featuring The Three Amigos. We will party with Donald Duck, learn Salsa, Merengue and have a Latin good time!

DISNEY KARAOKE

D Lounge, Deck 4, Midship - 10:45 p.m.

Be a singing superstar when you and your family take the stage and sing along to your favorite song.

ADULT ACTIVITY HIGHLIGHTS



SENSES SPA FITNESS CLASSES & SEMINARS

Sunrise Stretch - Senses Fitness Center - 7:00 a.m.

Fab Abs - Senses Fitness Center - 7:30 a.m. & 5:00 p.m.

Body Sculpt Boot Camp (Nom. Fee) - Senses Fitness Center - 8:00 a.m.

Core Conditioning Pilates - Senses Fitness Center - 4:00 p.m.

Facial Workshop - Outlook - 4:30 p.m.



MINI GOLF

Goofy Golf, Deck 13, Aft - 4:00 p.m.

MIXER

O'Gills Pub, Deck 4, Aft - 10:00 p.m.



ESPN DREAM TEAM DRAFT DAY - BASKETBALL

O'Gills Pub, Deck 4, Aft - 5:00 p.m.

Play ball! Join the "Commissioner" and engage in this interactive fantasy basketball draft unlike anything you've ever seen! Can YOU draft the greatest basketball team of All-Time?

LIVE PIANO MUSIC WITH LAURENCE J. BLACKLER

La Piazza, Deck 4, Aft - 7:30 p.m., 9:45 p.m. & 10:45 p.m.

Join Laurence J. Blackler in La Piazza this evening as he plays live for your listening pleasure.

LIVE MUSIC WITH ROB THOMPSON

O'Gills Pub, Deck 4, Aft - 10:00 p.m. & 11:00 p.m.

Join Rob Thompson as he plays LIVE guitar for your listening pleasure in O'Gills Pub tonight.



VIVA EUROPA

Europa, Deck 4, Aft - 10:15 p.m.

Join us as we give you an entertaining taste of Europe. From Italy, France, to Ireland and London and best of all you won't even have to leave the ship!



DOUBLE-UP JACKPOT BINGO

**D Lounge,
Deck 4, Midship**

Card Sales - 7:15 p.m.

Game Starts - 7:30 p.m.

Special double up session: All electronic cards purchased will be doubled. The snowball jackpot continues to grow and could be won today!



YOUTH ACTIVITY HIGHLIGHTS

DINE & PLAY

A convenience for families dining at 8:15 p.m., our Youth Activities Counselors will be available at 9:15 p.m. at the entrance of Royal Court, Enchanted Garden and Animator's Palate dining rooms to bring registered children to join the fun in the Youth Activity areas.



Deck 5 Midship (7-1440)
(3-12 years old) 10:00 a.m. - 12:00 mid

BIG TOP FUN FEST!

3:30 p.m.
It's the greatest show on Earth. Come re-discover the circus Disney style with clowns, jugglers and classic Disney cartoons.

PLUTO'S PAJAMA PARTY

8:45 p.m.
Bring the little ones in their pajamas but there will be anything but sleep when Pluto and friends host the ultimate slumber party!



Deck 5 Midship (7-1445)
(3-12 years old) 7:00 a.m. - 12:00 mid

GAGA BALL

11:15 a.m. & 8:30 p.m.
Come take part in this great game as you try to outlast your opponents.

SUPER SLOPPY SCIENCE - VOLCANOES

3:30 p.m.
Join Professor Make-O-Mess in some of the most extreme experiments you will ever seen in the world of Super Sloppy Science!



Deck 13 Midship (41-14426)
(11-14 years old) 10:00 a.m. - 1:00 a.m.

ESPN DREAM TEAM DRAFT DAY - BASEBALL

1:45 p.m.
Play ball! Join the "Commissioner" and engage in this interactive fantasy baseball draft unlike anything you've ever seen! Can YOU draft the greatest baseball team of All-Time?

ANYONE CAN COOK - CUPCAKES

7:00 p.m.
Anyone can cook as we work together to create some of our favorite treats. From our galley to yours, join our Chef as they show you how to create cupcakes!



Entrance on Deck 4 Forward (7-9418)
(14-17 years old) 12:00 p.m. - 2:00 a.m.

ZOMBIFIED

6:00 p.m.
A big movie producer is looking for a few good zombies to help him film the finale to his latest masterpiece, Zombified.

GHOST VOYAGERS

11:30 p.m.
The ship has come upon some mysterious waters and strange things are afoot. Join a team of paranormal experts to help investigate the area and track down any evidence of ghostly beings on the ship.

BUENA VISTA THEATRE

Today's Movies



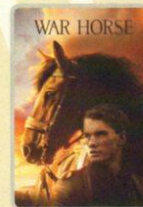
9:30 a.m.
Run Time:
1hr 30 min
Rating: G



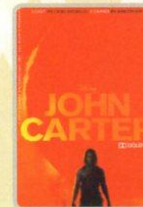
11:30 a.m.
Run Time:
1 hr 43 min
Rating: PG



2D Version
2:00 p.m.
Run Time:
2 hr 22 min
Rating: PG-13



5:00 p.m. & 8:00 p.m.
Run Time:
2 hr 26 min
Rating: PG-13



11:00 p.m.
Run Time:
2 hr 12 min
Rating: PG-13



Bring the family out to this interactive dance party featuring The Three Amigos. We will party with Donald Duck, learn Salsa, Merengue and have a Latin good time!

*D Lounge,
Deck 4, Midship
10:15 p.m.*



Have you been told you are full of useless information about pop culture? If the answer is "Yes", then you have what it takes to play the high energy game show all about the world of Pop!

*The Tube (18+),
Deck 4, Aft
10:30 p.m.*

YOUTH ACTIVITIES OPEN HOUSE

Open House is an opportunity for all to come and participate in a variety of exciting activities and free time in the Oceaneer Club, Lab, Edge and Vibe throughout the cruise. During these times secured programming will still be offered in the other venue for those looking to check their children into care.

MORE TO ENJOY WHILE ONBOARD



ADVENTURES BY DISNEY - HELLO WORLD

Join us for a special presentation tomorrow with an Adventure Guide to learn what traveling with Adventures by Disney is all about. See our Adventure Guide on Deck 4, Midship, for more information and take advantage of a 10% discount off your next adventure!



PLAN YOUR NEXT CRUISE

We invite you to take advantage of our exclusive Onboard Offer so you can return to paradise on Disney Cruise Line. Visit your Onboard Sales Manager on Deck 4, Midship, or call 7-2848 before the end of this cruise to find out more.



PORT & SHOPPING INFORMATION

Shopping Guides Johan & Marissa will be on the gangway from 8:00 to 9:00 a.m. to answer any last minute St. Thomas shopping questions. Make sure to bring your Shopping Maps, VIP Cards & Shopping Coupons!

PAMPER PACKAGE

- 50 minute Full Body Massage
- Foot & Ankle Massage
- Indian Scalp Massage
- 25 Minute Booster Facial

ONLY \$149
Call Senses Spa & Salon, 7-1465

ALBERTO TRUNK SHOW

House of Tanzanite special trunk show of fine Tanzanite, colored Diamonds, Alexandrite, and Emerald jewelry from classic chic to over the top elegant designs hand made in the US.

This week onboard at Whitecaps

Alberto Collections
world's largest supplier of distinctive and fine Tanzanite jewelry

This week onboard at Whitecaps

Shutters

GET THE PICTURE!

Do you only need a small number of digital images of your photos? We now offer two digital packages where you can choose your selected images in the comfort of your own home! Send them to friends or upload them on social media sites, the choice is yours! Please see one of our friendly Shutters staff to explain this great new product. Your photos will be available for viewing on our interactive kiosks in Shutters digital as well as in your personal photo folder in Shutters, Deck 4, Midship, Conditions applies.

**Please note that photos are available for viewing on our interactive photo kiosks approximately five hours after being taken and are only available for purchase during this cruise.*

ONBOARD AIRLINE CHECK IN

If you would like to have your boarding passes printed for you onboard and have your luggage taken to the airport for you, register by midnight tonight. If you have Disney Cruise Line airport transfer to Orlando International Airport and fly with one of the participating airlines, stop at Guest Services, Deck 3, Midship.

SURF @ SEA

\$0.75 per minute, or save money by buying blocks of time. \$55.00 for 100 minutes, \$100.00 for 250 minutes and \$150.00 for 500 minutes. Wireless information sheets are available at Guest Services, Deck 3, Midship.

Please note: Due to satellite connectivity, onboard internet service will be noticeably slower than you may be accustomed to and may at times be interrupted or unavailable.

ON DEMAND TV

Watch Disney movies, Hollywood features, ABC Shows, and even captioned content, plus much more "On Demand" for FREE in the comfort of your stateroom! Bookmark your movie and come back to watch it later. Press MENU on your stateroom television remote control, and follow the prompts.



Your Port Adventures Desk is open this morning for your last minute St. Thomas reservations. Let us take care of everything from Magen's Bay to island tours to St. John where you can sail and snorkel - your tour can even leave you time for shopping at the end! Don't forget to reserve space for the trip to St. John and its beautiful Trunk Bay beach. For the more adventurous, join us for one of the many Catamaran Sail and Snorkel excursions. Your friendly Port Adventures team are here to help.

SHOPPING

ALBERTO COLLECTIONS

Get your jewelry cleaned for FREE and save 55% off U.S. retail prices TODAY ONLY presented by Alberto Collections. Learn about exotic gemstones like Alexandrite, Tanzanite, and a rainbow of colored Diamonds. Meet expert gemologist, Tanzanite Tara, in Whitecaps, Deck 3, Forward.

FOSSIL SUNGLASSES

It sure is bright out on deck so be sure to stop by Whitecaps and check out the latest in fashion sunglasses.

MAUI JIM SUNGLASSES

Looking for sunglasses with polarized lenses? Check out our selection of Maui Jim sunglasses that prevent glare and squinting. Made in Hawaii.

OFFICER PIN TRADING

Come and trade pins with the Officers of the Disney Fantasy. Preludes, Deck 3, Forward, between 7.30 p.m. - 8.15 p.m.

FANTASY INAUGURAL MERCHANDISE

Bring home a memory of the Disney Fantasy's Inaugural sailings. Choose from tees, hats, sweatshirts, mugs and scrapbooks. Available at Sea Treasures, Deck 3, Forward.

CHOPARD

Swiss luxury watches and jewelry, designed for artisans showcasing unparalleled glamour and craftsmanship. Where originality, creativity, and technical mastery are pushed to their ultimate limits. In addition to Chopard's collection, we offer the Happy Mickey line, exclusively designed for Disney.

BIBBIDI BOBBIDI BOUTIQUE

Your princess's smile lasts a lifetime. The Bibbidi Bobbidi Boutique gives your princess pixie dust and courage. Fairy Godmother has selected her best trainees to make fairy tale wishes a reality. The Boutique is located on Deck 5, Midship, across from the Port Adventures Desk. Call ext.9438 or stop by to make a reservation.

Due to port regulations, when the ship is docked, the stores will remain closed.

IMPORTANT INFORMATION

Security Notice

All Guests (including children) who wish to disembark the ship are required to present their Key to the World card at the gangway. A photo ID is also required for those Guests who are 18 years of age or older. Guests under the age of 18 are required to have a Parent, Guardian or other responsible adult sign an authorization form at the time it is given out if they wish to go ashore unaccompanied. Authorization forms are available at the gangways and Guest Services.

Please Note:

Please remember to use plenty of sunscreen & mosquito/ insect repellent when venturing ashore.

Cold and Flu Reminder

Please wash hands frequently and thoroughly, particularly before meals. Contact the Health Center by dialing 7-1923, should anyone in your party become ill.

Corridor Quiet Hours

As a courtesy to all our Guests, please recognize quiet hallway hours from 10:00 p.m. to 8:00 a.m.

Inclement Weather

For the safety of all Guests, outdoor events may be changed due to unforeseen weather conditions.

Environmental Message

With Disney's commitment to the Environment, please refrain from throwing anything over the Ship's side. Thank you!

No Reserved Seats Policy

As a courtesy to all our Guests, we kindly advise that the saving of seats is not permitted in the Walt Disney Theatre, and the saving of the sun loungers is not permitted on Deck 11, 12, and 13. Items left unattended will be returned to lost and found at Guest Services, Deck 3 Midship.

Smoking

For the comfort of our guests the following areas are designated as Smoking areas: - Promenade Deck (Deck 4), smoking is permitted Port Side, Aft only from 6:00 p.m. to 6:00 a.m.
- Currents - Deck 13, Forward, Port Side.
- Meridian Bar - Deck 12, Aft, Port Side, outside.
- Smoking is permitted on stateroom verandahs.
- Smoking is prohibited inside all guest staterooms. Guests found smoking in their staterooms will be charged a \$250 stateroom recovery fee.

Walt Disney Theatre

Theatrical performances may use artificial fog, strobe lights, pyrotechnics and other special effects. For the safety of our performers and the comfort of those around you, the use of any photographs, video recording device or any electronic equipment is prohibited.

Verandah Safety

Please do not leave any combustible materials on your balcony when not present in your stateroom for safety reasons.

Morning	8:30	8:45	9:00	9:15	9:30	9:45	10:00	10:15	10:30	10:45	11:00	11:15	11:30	11:45	12:00	12:15	12:30	12:45	1:00	1:15	1:30	
FUNNELVISION					Dumbo (G) FunnelVision				Pixar Short Films (G) FunnelVision				Hannah Montana: The Movie (G) FunnelVision									
MOVIES					The Lion King (G) Buena Vista Theatre								The Muppets (PG) Buena Vista Theatre									
CHARACTER																						
FUN FOR ALL AGES	Port Adventures - Please check your tickets for meeting times. Port Adventures Desk																Connect 4 Challenge O'Gills Pub					
ADULTS	Friends of Bill W. Outlook																					
VIBE											Open House											
EDGE					Open House																	
OCEANEER LAB	Chillin' in the Lab								♥ Human Bingo								Open House					
					Animation Cells								♥ GAGA Ball				Youth Lunch					
OCEANEER CLUB									Crafts Galore								Wii Challenge					
									♥ Memory Wall													

Symbol for activities that will be repeated during the cruise

Afternoon	1:45	2:00	2:15	2:30	2:45	3:00	3:15	3:30	3:45	4:00	4:15	4:30	4:45	5:00	5:15	5:30	5:45	6:00	6:15	6:30	6:45	
FUNNELVISION	Cars (G) FunnelVision								Jam Fest at Sea FunnelVision				Ratatouille (G) FunnelVision									
MOVIES	The Avengers (PG-13) - 2D Version Buena Vista Theatre								War Horse (PG-13) Buena Vista Theatre				> 7:26 p.m.									
CHARACTER	Chip and Dale Lobby Atrium		Goofy Lobby Atrium		Tinker Bell Lobby Atrium		Tiana Lobby Atrium		Donald Lobby Atrium		Peter Pan Lobby Atrium		Daisy Lobby Atrium		Snow White Lobby Atrium							
FUN FOR ALL AGES	XBox® Kinect™ - Wipeout Challenge O'Gills Pub				Cruisin' for Trivia D Lounge				Jam Fest at Sea Deck Stage				Live Music with "The Dreamers" Lobby Atrium									
	Board Games Available in O'Gills Pub O'Gills Pub								Disney Animation: Persistence of Vision D Lounge				Disney Vacation Club Member Celebration The Tube									
ADULTS					Core Conditioning Pilates Senses Fitness Center				Art of The Theme Show Tour Meet at Meridian													
					Club 18*21 - Mini Golf Goofy Golf				ESPN Dream Team Draft Day - Basketball O'Gills Pub													
VIBE					Disney Animation: Cartoon Physics								Zombified									
EDGE	ESPN Dream Team Draft Day - Baseball								Dodgeball													
OCEANEER LAB	Open House								♥ Super Sloppy Science - Volcanoes				♥ Magic Playfloor									
													♥ Pictionary									
OCEANEER CLUB	Matinee Movie				♥ Big Top Fun Fest!				♥ Parachute Games				Youth Dinner									
	♥ Animation Cells								Make Your Own Wand													
OUT AND ABOUT	Shuffleboard Deck 4, Starboard Side																					

FOLD

Fold along the dotted lines and take me with you so you don't miss any of the fun!

Evening	7:00	7:15	7:30	7:45	8:00	8:15	8:30	8:45	9:00	9:15	9:30	9:45	10:00	10:15	10:30	10:45	11:00	11:15	11:30	11:45	12:00	
FUNNELVISION					Bolt (PG) FunnelVision								Enchanted (PG) FunnelVision									
MOVIES					War Horse (PG-13) Buena Vista Theatre								John Carter DOLBY 3D (PG-13) Buena Vista Theatre									
CHARACTER	Peter Pan Lobby Atrium		Mickey Lobby Atrium		Tinker Bell Lobby Atrium		Minnie Lobby Atrium		Aladdin Dk 4, Mid		Stitch Lobby Atrium		Tinker Bell Lobby Atrium		Tiana Dk 4, Mid		Minnie Lobby Atrium		Hook & Smees Dk 4, Mid			
FUN FOR ALL AGES	Bingo Pre Sales D Lounge				Double Up Jackpot Bingo D Lounge				♥ Magic DAVE Walt Disney Theatre				Live Music with "The Dreamers" Lobby Atrium									
									Disney Trivia D Lounge				Disney Karaoke D Lounge									
ADULTS	Live Piano Music with Laurence J. Blackler La Piazza								Club 18*21 Mixer O'Gills Pub				Pop! The Tube									
									Live Piano La Piazza				Viva Europa with Guest DJ Immortal The Tube									
VIBE	Zombified				Smoothie Hour				ESPN Dream Team Draft Day - Football				Pump It Up									
EDGE	Anyone Can Cook												Ghost Voyagers									
OCEANEER LAB	♥ Magic Show				♥ GAGA Ball				♥ Super Sloppy Science - Flubber													
									Wii Challenge													
OCEANEER CLUB	♥ Once Upon a Time				♥ Pluto's Pajama Party								Movie Time									
OUT AND ABOUT	A to Z Scavenger Hunt Eye Scream																					

FOLD

IN THE SPOONLIGHT SERIES
DOLBY 3D SERIES
HAPPY JUPITER SERIES
CREATE & INVENT SERIES
CLUBHOUSE SERIES
STORYBOOK SERIES

WEDNESDAY, MAY 23, 2012 - ST. THOMAS

BUENA VISTA THEATRE

9:30 a.m. Run Time: 1 hr 30 min Rating: G

11:30 a.m. Run Time: 1 hr 45 min Rating: PG

2:00 p.m. Run Time: 2 hr 22 min Rating: PG-13

5:00 p.m. & 8:00 p.m. Run Time: 2 hr 26 min Rating: PG-13

11:00 p.m. Run Time: 2 hr 12 min Rating: PG-13

Character Appearances

CHIP AND DALE
Lobby Atrium - 2:30 p.m.

GOOFY
Lobby Atrium - 3:00 p.m.

TINKER BELL
Lobby Atrium
4:30 p.m., 5:30 p.m., 7:30 p.m. & 9:30 p.m.

PRINCESS TIANA
Deck 4, Balcony - 9:45 p.m.

PINOCCHIO
Deck 4, Balcony
4:45 p.m. & 9:15 p.m.

DONALD DUCK
Lobby Atrium - 5:00 p.m.

CAPTAIN JACK & MR. SMEE
Deck 4, Balcony - 5:15 p.m., 7:00 p.m. & 10:15 p.m.

PETER PAN
Lobby Atrium
5:15 p.m. & 7:00 p.m.

DAISY DUCK
Lobby Atrium - 5:30 p.m.

ALADDIN & GENIE
Preludes - 5:45 p.m.
Deck 4, Balcony - 8:00 p.m.
Lobby Atrium - 10:15 p.m.

For details of daily Disney character appearances, refer to the character line in your Navigator Grid or the digital character board in the Lobby Atrium.



YOUTH ACTIVITIES THEMED EXPERIENCES

- CLUBHOUSE SERIES** focuses on movement and features content which appeals to younger children.
- STORYBOOK SERIES** is designed with a strong connection to the Disney classic stories.
- JUNIOR UP SERIES** includes large group games & movement-oriented activities.
- CREATE & INVENT SERIES** will have a trade focus allowing children to create and solve their work.
- WIN THE SPORTS SERIES** focuses on children's stage presence with lots of activities and competitions.
- SCIENCE SERIES** are less active, but will challenge children with problem-solving based activities.

SHIP DIRECTORY

Activity	Deck	Time
Disney's Oceaneer Club	Deck 5, Mid	10:00 AM - 12:00 MID
Disney's O'ceaner Lab	Deck 5, Mid	7:00 AM - 12:00 MID
Edge	Deck 13, Mid	10:00 AM - 1:00 AM
Vibe	Deck 4, Fwd	12:00 PM - 2:00 PM
It's A Small World Nursery	Deck 5, Mid	7:00 AM - 11:00 PM
RECREATION		
AquaDuck	Deck 12, Mid	9:00 AM - 10:00 PM
Donald's Pool	Deck 12, Aft	1:00 PM - 7:00 PM
GOODY'S SPORTS SIMULATORS	Deck 11, Mid	6:00 AM - 12:00 MID
GOODY'S SPORTS DECK	Deck 13, Aft	11:00 AM - 6:00 PM
GOODY'S SPORTS DECK	Deck 12, Aft	8:00 AM - 10:00 PM
MICKY'S POOL	Deck 11, Mid	6:00 AM - 6:00 PM
MICKY'S SLIDE	Deck 11, Mid	9:00 AM - 6:00 PM
MIDSHIP DETECTIVE AGENCY	DECK 2 & 5, MID	9:00 AM - 10:00 PM
MEMO'S REEF	Deck 11, Mid	9:00 AM - 7:00 PM
PORT ADVENTURES DESK	Deck 5, Mid	7:30 AM - 11:00 AM
QUIET COVE POOL	Deck 11, Fwd	6:00 AM - 12:00 MID
SATELITE FALLS	Deck 13, Fwd	6:00 AM - 6:00 PM
SATELITE FITNESS CENTER	Deck 11, Fwd	6:30 AM - 10:00 PM
GENERAL INFORMATION		
ARR-COPE	Deck 11, Aft	24 Hours
ADVENTURES BY DISNEY	Deck 4, Mid	3:00 PM - 5:00 PM
DISNEY VACATION CLUB	Deck 4, Mid	5:00 PM - 10:00 PM
FUTURE CRUISE SALES DESK	Deck 4, Mid	4:00 PM - 6:00 PM
GUEST SERVICES	Deck 3, Mid	7:30 PM - 8:30 PM
MEDICAL HEALTH CENTER	Deck 1, Fwd	24 Hours
PORT & SHOPPING DESK	Deck 4, Mid	9:30 AM - 11:00 AM
PRELUDES	Deck 3, Fwd	4:30 PM - 7:00 PM
SENSUS SPA AND SAUN	Deck 4, Mid	5:45 PM - 6:30 PM
SHUTTERS PHOTO GALLERY	Deck 4, Mid	8:00 AM - 10:00 PM
SHUTTERS DIGITAL	Deck 4, Mid	5:00 PM - 10:30 PM
SHOPPING		
Bleisure Boutique	Deck 5, Mid	9:00 AM - 9:00 PM
CHICK'S MARKET	Deck 3, Fwd	4:30 PM - 11:00 PM
CHICKS	Deck 1, Mid	4:30 PM - 11:00 PM
SEA TREASURES	Deck 3, Fwd	4:30 PM - 11:00 PM
VISA GALLERY	Deck 4, Mid	6:00 PM - 10:00 PM
WITCHES & WIZARDS	Deck 3, Fwd	4:30 PM - 11:00 PM
WITCHES & WIZARDS	Deck 11, Mid	6:00 PM - 11:00 PM

DINNER MENU
Auntie's Polynesian, Pizzeria & Pizzeria
Pizzeria, Grill, Pizzeria & Pizzeria
Dining Times: 5:45pm & 8:15pm

DRINK OF THE DAY
Pineapple Delight
(New Availability)

WEATHER FORECAST
High: 83-72° F
Low: 78-72° F

DINING & LOUNGES

Area	Deck	Time
CAJANAS CONTEMPORAL	Deck 11, Aft	6:15 AM - 6:45 AM
CAJANAS	Deck 11, Aft	6:45 AM - 10:30 AM
ENCHANTED GARDEN	Deck 2, Mid	8:00 AM - 9:30 AM
CAJANAS	Deck 11, Aft	12:00 PM - 2:00 PM
ENCHANTED GARDEN	Deck 2, Mid	11:00 AM - 6:00 PM
FILMORE'S FAVORITES	Deck 11, Mid	11:00 AM - 6:00 PM
LUGER'S PIZZA	Deck 3, Mid	12:00 PM - 1:30 PM
TOW MAYER'S GRILL	Deck 11, Mid	11:00 AM - 11:00 PM
ANIMATOR'S PALATE	Deck 3, Aft	5:45 PM & 8:15 PM
ENCHANTED GARDEN	Deck 2, Mid	5:45 PM & 8:15 PM
ROYAL COURT	Deck 3, Mid	6:30 PM - 8:30 PM
CAJANAS TABLE SERVICE	Deck 11, Aft	6:30 PM - 8:30 PM
LIVE NIGHT MUSIC	Deck 4, Aft	10:45 PM - 11:45 PM
CAJANAS PRIME BUFFET	Deck 11, Mid	9:30 PM - 12:30 AM
LUGER'S PIZZA	Deck 11, Mid	9:30 PM - 12:30 AM
BEVERAGE STATION	Deck 11, Mid	24 Hours
ETC. SCREAM	Deck 11, Mid	11:00 AM - 11:00 PM
ROOM SERVICE	Del. 0	24 Hours
ENTERTAINMENT - LOUNGES - BARS		
BOW VOYAGE	Deck 3, Mid	3:00 PM - 11:00 PM
COVE BAR (18+)	Deck 11, Fwd	1:00 PM - 10:30 AM
COVE CAFE (18+)	Deck 11, Fwd	7:00 AM - 12:00 AM
CHIRRENS (18+)	Deck 13, Fwd	10:00 AM - 11:00 PM
D LOUNGE	Deck 4, Mid	SHOWTIMES
FRODOZE TREATS	Deck 11, Mid	11:00 AM - 10:00 PM
LA PIZZA	Deck 4, Aft	4:00 PM - 12:00 AM
MERIDIAN (18+)	Deck 4, Aft	5:00 PM - 12:00 AM
O'GILLIS PUB	Deck 4, Aft	1:00 PM - 12:00 AM
OH LA LA (18+)	Deck 4, Aft	5:00 PM - 12:00 AM
QUINOOK	Deck 14, Mid	5:00 PM - 12:00 AM
SKINNY (18+)	Deck 4, Aft	10:00 PM - 2:00 AM
THE TUBE (18+)	Deck 4, Mid	7:30 AM - 11:00 PM
VISA CAFE	Deck 12, Aft	11:30 AM - 7:00 PM
WAVES	Deck 12, Aft	11:30 AM - 7:00 PM

Consumers who order food or partially cooked items from any of the above venues are advised to ensure that the food is not subsequently cooked to ensure its safety.

PORT ADVENTURES

IMPORTANT INFORMATION

Please check your tour tickets for meeting times and locations. Visit the Port Adventures Desk, Deck 5, Midship, for any questions.

All Ashore: Approx. 7:45 a.m.
All Aboard: 4:00 p.m.

SHIPS AGENT INFORMATION
Virgin Port Services, 1001 Blackbeard's Hill, St. Thomas, USVI 00802.
Tel: 340 775 1151, 305 608 1908

IMPORTANT NUMBERS
Fire/Security: 7-3001
Medical EMERGENCY: 7-3000
Health Center: 7-1923