

PERSONAL NAVIGATOR

MONDAY, MAY 21, 2012

Sunrise: 5:58 a.m. Sunset: 6:54 p.m.
Evening Attire: Cruise Casual

Monday: Partly Cloudy High: 80°F/27°C
Tuesday: Mostly Sunny High: 78°F/26°C

DAY AT SEA

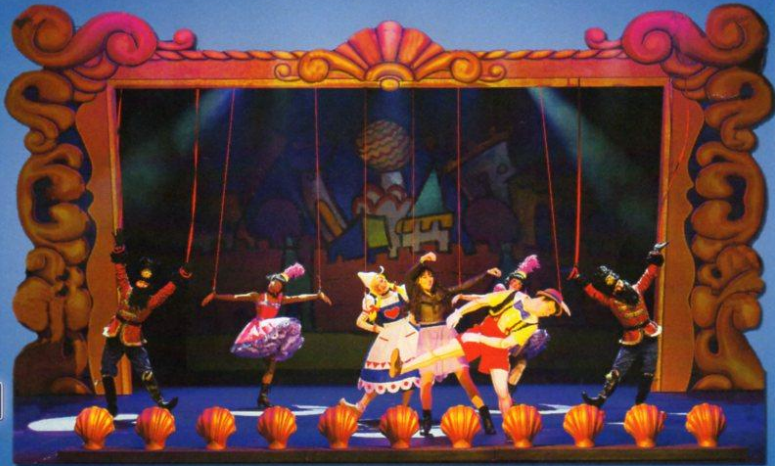
Disney WISHES

On the eve of their graduation, three best friends go on a magical journey down the wishing well. A host of Disney characters help them discover the connection between children who are becoming adults, and adults who stay in touch with being a kid at heart.

Walt Disney Theatre
Decks 3 & 4, Forward
6:15 p.m. & 8:30 p.m.



Assistance available at the entrance to the Walt Disney Theatre 30 minutes prior to show time.




Disney Fantasy Fun Facts

The two huge mosaic walls based on the Disney Pixar animated feature "Finding Nemo" are showcased in Cabanas casual-dining restaurant on Deck 11. Created for the Disney Fantasy by Italian artists, each wall is more than 25 feet wide and more than 8 feet high and contains approximately 194,500 tiles in 200 colors of hand-crafted Venetian enamel. A team of nine artists created the mosaics based on Pixar designs depicting the underwater world of Australia's Great Barrier Reef and characters featured in the motion picture.

Point of Interest

Below is a point of interest and an approximate time that we will be passing during our voyage to St. Maarten today:

11:00 p.m. - Anegada Island - Starboard Side



FAMILY CABARET

Featuring the Comedy & Juggling of Michael Holly, as he entertains the entire family in this fun-filled show.

7:30 p.m., The Tube
Deck 4, Aft

Don't Miss:

Art of The Theme Show Tour

Meet at Meridian (18+), Deck 12, Aft - 9:30 a.m.
Join us on a guided ship tour and discover the key ingredients that makes the Disney Fantasy cruise ship one-of-a-kind. Repeated throughout the cruise.

Disney Animation: Cartoon Physics

D Lounge, Deck 4, Midship - 9:45 a.m.
Go behind the scenes at Walt Disney Animation Studios and see how flat drawings and pencil lines can come to life through basic techniques such as Stretch and Squash, and create your own "bouncing ball" animation exercise in this entertaining and fun enrichment program.

Behind the Scene: Gary Hoffman

Buena Vista Theatre (18+), Decks 4 & 5, Forward - 2:00 p.m.
Join Imagineer Gary Hoffmann as he takes you behind-the-scenes at Walt Disney World's newest resort, Disney's Art of Animation. Jump into the imagination of the animator and find yourself completely immersed in the stories of Finding Nemo, Cars, The Lion King and The Little Mermaid.



Sport's Simulators

Digital sports simulators are available at Goofy's Sports Deck on Deck 13, Aft. This state-of-the-art virtual sports experience includes golf, basketball, baseball, hockey and soccer. Book now at the Port Adventures Desk, Deck 5, Midship.

DINNER MENU

Animator's Palate : Pacific Rim Cuisine
Enchanted Garden : Continental Market Cuisine
Royal Court : French Cuisine

DRINK OF THE DAY

High Tide (Alcoholic)
Passion Cream Freeze (Non Alcoholic)

IMPORTANT NUMBERS

Fire/Security: 7-3001
Medical Emergency: 7-3000
Health Center: 7-1923

YOUTH ACTIVITY HIGHLIGHTS

DINE & PLAY

A convenience for families dining at 8:15 p.m., our Youth Activities Counselors will be available at 9:15 p.m. at the entrance of Royal Court, Enchanted Garden and Animator's Palate dining rooms to bring registered children to join the fun in the Youth Activity areas.

CLUBHOUSE KIDS

Is a structured play time offered during secured programming, and is recommended for children ages 3-7. During Clubhouse Kids time in the Oceaneer Club, Counselors will be able to interact and encourage the youngest cruisers in specific activities, ensuring they are engaged.



Deck 5 Midship (7-1440)
(3-12 years old) 9:00 a.m. - 11:00 p.m.

ALOHA LUAU

9:30 a.m.

It's party time, Hawaiian style! Come join us for a Luau experience and learn how to dance like Lilo & Stitch.

ONCE UPON A TIME

4:00 p.m.

Join Bartleby the Bookmaker for a magical, musical story time featuring a Disney Princess!



Deck 5 Midship (7-1445)
(3-12 years old) 9:00 a.m. - 12:00 mid

PISTON CUP CHALLENGE

9:30 a.m.

It's Dinoco time and you're part of the pit crew! Design your own race car and see if you've got what it takes to end up in the Winner's Circle!

GET THE HOOK

9:30 p.m.

A villainous villain has stolen Captain Hook's prized golden hook. Become a member of the Top Deck Detective Agency and help solve the clue's to retrieve Hook's hook.



Deck 13 Midship (41-14426)
(11-14 years old) 10:00 a.m. - 1:00 a.m.

ANYONE CAN COOK

2:30 p.m.

Anyone can cook as we work together to create some of our favorite treats.

THAT'S HILARIOUS

7:30 p.m.

Ever wanted to show off your comedy skills? Then be a part of the cast for the crazy improv show "That's Hilarious" and put on a live show for your family and friends.



Entrance on Deck 4 Forward (7-9418)
(14-17 years old) 10:00 a.m. - 2:00 a.m.

DIVE INTO DJ'ING

3:30 p.m.

Hop on the turn tables and learn to scratch with Guest DJ Immortal.

ESPN MONDAY NIGHT FOOTBALL CALL IT!

7:30 p.m.

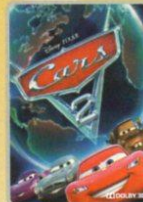
Test your Monday Night Football knowledge as you watch some of the greatest highlights in football history and then "make the call" as to what happens next!

BUENA VISTA THEATRE

Today's Movies



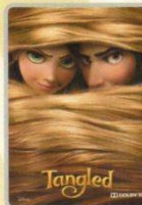
8:30 a.m.
Run Time:
1 hr 43 min
Rating: G



11:00 a.m.
Run Time:
1 hr 56 min
Rating: G



3:30 p.m.
Run Time:
1 hr 18 min
Rating: G



5:45 p.m. & 8:00 p.m.
Run Time:
1 hr 40 min
Rating: PG

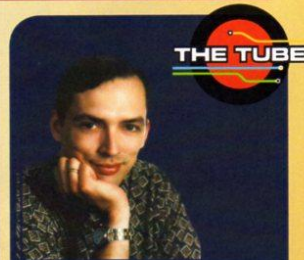


10:15 p.m.
Run Time:
2 hr 26 min
Rating: PG-13



Bring the entire family and test your Disney knowledge in the high-tech interactive game show, Family Fusion.

*D Lounge,
Deck 4, Midship
7:30 p.m.,*



ADULT CABARET

Featuring the Comedy of Daren Streblov at this exclusive Adults Only Cabaret Style show.

*The Tube (18+),
Deck 4, Aft
10:15 p.m.*

YOUTH ACTIVITIES OPEN HOUSE

Open House is an opportunity for all to come and participate in a variety of exciting activities and free time in the Oceaneer Club, Lab, Edge and Vibe throughout the cruise. During these times secured programming will still be offered in the other venue for those looking to check their children into care.

FAMILY ACTIVITY HIGHLIGHTS

DISNEY TRIVIA

La Piazza, Deck 4, Aft - 11:30 a.m.

Navigate your way through another round of questions to test how much you really know about Disney.



DISNEY CHANNEL ON DECK

Deck Stage, Deck 11, Midship - 12:30 p.m.

Don't change that channel! It's time for a Disney Channel pool party! Your Cruise Staff will host an exciting day of games and contests in between your favorite Disney Channel shows! So sit back, relax, and enjoy the sun!

THE QUEST

D Lounge, Deck 4, Midship - 1:15 p.m.

Enjoy the wildest and wackiest scavenger team event on the seven seas!



CHIP-IT GOLF (12+)

Lobby Atrium, Deck 3, Midship - 2:15 p.m.

It's par for the course for our Guests 12 and older to compete on our special "greens" in this fun tournament.

DIAMOND AND GEMSTONE SEMINAR

The Tube, Deck 4, Aft - 2:30 p.m.

Join your Port & Shopping Guides Johan & Marissa to learn about exotic Caribbean Gemstones, Tanzanite & Diamonds. Free gemstone pendant for all in attendance!

FAMILY KARAOKE

D Lounge, Deck 4, Midship - 9:30 p.m. & 10:45 p.m.

Be a singing sensation when you and your family take to the stage and sing along to your favorite song.



D TUNES FAM JAM

D Lounge, Deck 4, Midship - 10:15 p.m.

Tune IN and rock with us at this new family dance party! Spread the word, there will be cool music, new dances, contests and a chance to win great prizes!

ADULT ACTIVITY HIGHLIGHTS

SENSES SPA FITNESS CLASSES & SEMINARS

Sunrise Stretch - Senses Fitness Center - 7:00 a.m.

Fab Abs - Senses Fitness Center - 7:30 a.m. & 5:00 p.m.

Body Sculpt Boot Camp (Nom. Fee) - Senses Fitness Center - 9:00 a.m.

Fitness Frenzy (13-17) (Nom. Fee) - Senses Fitness Center - 10:00 a.m.

Back Pain Solutions - Outlook - 10:15 a.m.

Detox For Health and Weight Loss - Outlook - 11:00 a.m.

Secrets To A Flatter Stomach - Senses Fitness Center - 1:00 p.m.

Group Cycling - Senses Fitness Center - 4:00 p.m.



TASTING CLASSES

New World Wine Tasting (21+) - Ooh La La - 1:00 p.m.

Martini Tasting (21+) - Meridian - 3:00 p.m.

Tequila & Margarita (21+) - The Tube - 5:00 p.m.

Please make reservations for tastings at Guest Services for a nominal fee.

Tasting Seminars are only for Guest's 21 and Older.

LUNCH

Enchanted Garden, Deck 2, Midship - 12:15 p.m.

GIANT BOARD GAME CHALLENGE

O'Gills Pub, Deck 4, Aft - 3:15 p.m.

MIXER

O'Gills Pub, Deck 4, Aft - 10:00 p.m.



ANYONE CAN COOK - SEA BASS

D Lounge, Deck 4, Midship - 2:30 p.m.

From our galley to yours. Join our chefs as they show you how to prepare delicious dishes. Todays Menu - Sea Bass



50 MOVIE QUOTES TRIVIA

O'Gills Pub, Deck 4, Aft - 10:30 p.m.

"Life is like a box of Chocolates" Know the movie? Join your Cruise Staff and test your Movie Quote knowledge.

LIVE MUSIC WITH LAURENCE J. BLACKLER

Outlook, Deck 14, Midship - 7:30 p.m., 9:45 p.m. & 10:45 p.m.

Enjoy some timeless classic's as Laurence J. Blackler plays live piano for your listening pleasure.



\$5,000 MEGA JACKPOT BINGO

D Lounge, Deck 4, Midship

Card Sales - 10:45 a.m.

Game Starts - 11:00 a.m.

It's big, it's massive, it's supersized. It's \$5,000 MEGA jackpot bingo! Take home \$5,000 if you can cover your card in 46 numbers or less. If not, we carry on to play for the biggest cash prize of the session.

MEGA RAFFLE JACKPOT BINGO

D Lounge, Deck 4, Midship

Card Sales - 3:30 p.m.

Game Starts - 3:45 p.m.

Join your Cruise Staff for family Bingo fun! Four cash prize games. Plus, great raffle prize packs to be won. Don't miss out on the fun!



MORE TO ENJOY WHILE ONBOARD



PLAN YOUR NEXT CRUISE

Already dreaming of your next magical cruise? Stop by the Future Cruise Sales Desk, Deck 4, Midship, or call extension 7-2848 to learn about how you can save 10% and receive up to \$200 in Onboard Credit on your next cruise!



DISNEY VACATION CLUB® GROUP PREVIEW

Want to learn more about taking magical vacations year after year? Please see a Disney Vacation Club representative on Deck 4, Midship, or call 7-2805 from your stateroom phone for more information about our interactive group presentation.



DIAMOND AND GEMSTONE SEMINAR

Join your Shopping Guides Johan & Marissa to learn about exotic Caribbean Gemstones, Tanzanite & Diamonds. Free gemstone pendant for all in attendance! Followed by a raffle to win a Tanzanite Pendant! 2:30 p.m., The Tube, Deck 4, Aft.

SENSES
SPA & SALON

SPA TOPIA SPECIAL

Full body exfoliation. Hotstone back massage on the back neck and shoulders, booster facial and foot and ankle massage

75 mins. \$135

4:00 p.m. to 9:00 p.m. ONLY

SILENT ART AUCTION

Your chance to take part in our Silent Art Auction today. Vista Gallery, Deck 4, Midship.

Preview
10:00 a.m. - 12:00 p.m.
Auction
1:00 - 4:00 p.m.

Shutters **SEE YOUR PHOTOS!**

All your formal portraits taken last night are ready for purchase. Avoid the rush on the last night of the cruise and order your stateroom photos for one low price on a CD for only \$349.95 CD includes the artwork and for \$50 more you can buy the printed copy as well! Terms and conditions apply.

**Please note that photos are available for viewing on our interactive photo kiosks approximately three hours after being taken and are only available for purchase during this cruise.*

ONBOARD AIRLINE CHECK IN

If you would like to have your boarding passes printed for you onboard and have your luggage taken to the airport for you, register by midnight of Wednesday. If you have Disney Cruise Line airport transfer to Orlando International Airport and fly with one of the participating airlines. Stop at Guest Services, Deck 3, Midship.

SURF @ SEA

\$0.75 per minute, or save money by buying blocks of time. \$55.00 for 100 minutes, \$100.00 for 250 minutes and \$150.00 for 500 minutes. Wireless information sheets are available at Guest Services, Deck 3, Midship.

Please note: Due to satellite connectivity, onboard internet service will be noticeably slower than you may be accustomed to and may at times be interrupted or unavailable.

ON DEMAND TV

Watch Disney movies, Hollywood features, ABC Shows, and even captioned content, plus much more "On Demand" for FREE in the comfort of your stateroom! Bookmark your movie and come back to watch it later. Press MENU on your stateroom television remote control, and follow the prompts.



Tomorrow the two nation island of St. Maarten / St. Martin awaits us. Your knowledgeable Port Adventures team is standing by to answer all your questions about the best choices for you and your family. Enjoy the beautiful and magnificent Orient Bay Beach or take a rip roaring ride on a RIB boat past the airport to the French side for some snorkeling. Visit the Port Adventures Desk, Deck 5, Midship, for more information.

SHOPPING

GUESS THE CARAT WEIGHT

Guess the carat weight of the exquisite Tanzanite ring. The person that guesses the closest to the actual carat weight wins a pair of Tanzanite studs courtesy of Alberto Collections, House of Tanzanite line. 5:00 p.m. - 9:00 p.m. Winner will be drawn at 9:00 p.m. and awarded the prize! You can only win if you guess. Whitecaps, Deck 3, Forward.

FANTASY LOGO

Bring home a memory of your first sailing on the Disney Fantasy. Choose from tees, hats, sweatshirts, mugs and scrapbooks. Mickey's Mainsails, Deck 3, Forward.

MICHELLE WATCHES

Visit Whitecaps to view Michelle Watches collection. Swiss made watches with intricate details. Purchase watchface's and watchbands separately to personalize the look. Available in Whitecaps, Deck 3, Forward.

LACOSTE

Symbol of casual elegance since 1933. Authenticity, performance and elegance as the main detail in each piece. Men's and ladies accessories available in Whitecaps, Deck 3, Forward.

DISNEY CRUISE LINE EXCLUSIVE BOXED JEWELRY

Today only, starting from \$29 the perfect gift for friends and family at home! Available in Whitecaps, Deck 3, forward.

WHOZITS AND WHATZITS

It's your next door shop while enjoying the sun and the pool. Come and visit us for all your AquaDuck souvenirs, swim wear and accessories! Deck 11, Midship, available from 10:00 a.m. to 4:00 p.m.

MICHELLE WATCHES

Swiss made watches with intricate details. Purchase face and band separately to personalize the look. Available ONLY in Whitecaps, Deck 3, Forward.

IMPORTANT INFORMATION

Security Notice

All Guests (including children) who wish to disembark the ship are required to present their Key to the World card at the gangways. A photo ID is also required for those Guests who are 18 years of age or older. Guests under the age of 18 are required to have a Parent, Guardian or other responsible adult sign an authorization form at the time it is given out if they wish to go ashore unaccompanied. Authorization forms are available at the gangways and Guest Services.

Please Note:

Please remember to use plenty of sunscreen & mosquito/ Insect repellent when venturing ashore.

Cold and Flu Reminder

Please wash hands frequently and thoroughly, particularly before meals. Contact the Health Center by dialing 7-1923, should anyone in your party become ill.

Corridor Quiet Hours

As a courtesy to all our Guests, please recognize quiet hallway hours from 10:00 p.m. til 8:00 a.m.

Inclement Weather

For the safety of all Guests, outdoor events may be changed due to unforeseen weather conditions.

Environmental Message

With Disney's commitment to the Environment, please refrain from throwing anything over the Ship's side. Thank you!

No Reserved Seats Policy

As a courtesy to all our Guests, we kindly advise that the saving of seats is not permitted in the Walt Disney Theatre, and the saving of the sun loungers is not permitted on Deck 11, 12, and 13. Items left unattended will be returned to lost and found at Guest Services, Deck 3 Midship.

Smoking

For the comfort of our guests the following areas are designated as Smoking areas - Promenade Deck (Deck 4), smoking is permitted Port Side, Aft only from 6:00 p.m. to 6:00 a.m.
- Currents - Deck 13, Forward, Port Side.
- Meridian Bar - Deck 12, Aft, Port Side, outside.
- Smoking is permitted on stateroom verandahs.
Smoking is prohibited inside all guest staterooms. Guests found smoking in their staterooms will be charged a \$250 stateroom recovery fee.

Walt Disney Theatre

Theatrical performances may use artificial fog, strobe lights, pyrotechnics and other special effects. For the safety of our performers and the comfort of those around you, the use of any photography, video recording device or any electronic equipment is prohibited.

Verandah Safety

Please do not leave any combustible materials on your balcony when not present in your stateroom for safety reasons.

Morning	8:30	8:45	9:00	9:15	9:30	9:45	10:00	10:15	10:30	10:45	11:00	11:15	11:30	11:45	12:00	12:15	12:30	12:45	1:00	1:15	1:30
FUNNELVISION	Cinderella (G) FunnelVision			Monsters, Inc. (G) FunnelVision						Disney Channel on Deck FunnelVision											
MOVIES	Toy Story 3 (G) Buena Vista Theatre						Cars 2 (G) Buena Vista Theatre														
CHARACTER	Mickey Dk 4, Mid			Pluto Lobby Atrium		Minnie Daisy Dk 4, Mid		Mickey Goofy Dk 4, Mid		Minnie Donald Dk 4, Mid		Character Dance Party Lobby Atrium			Jake Dk 4, Mid		Peter Pan Lobby Atrium				
FUN FOR ALL AGES	Wake Up with Wii O'Gills Pub			Pictionary La Piazza		BINGO D Lounge		\$5,000 Mega Jackpot Bingo D Lounge		Family Crafts - Beach Balls D Lounge			Disney Vacation Club Group Preview The Tube								
ADULTS	Friends of Bill W. Outlook		Boot Camp (Nom. Fee) Senses Fitness Center		Art of The Theme Show Tour Meet at Meridian				Detox For Health and Weight Loss Outlook		18*21 Lunch Enchanted Garden		New World Wine Tasting (21+) Ooh La La (Nom. Fee)								
VIBE	Open House			Coffee Break		Hangin' in Vibe															
EDGE	Open House			Chillin' in the Edge																	
OCEANEER LAB	Open House			Piston Cup Challenge		Crafts Galore		Pictionary		Youth Lunch		Magic Show									
OCEANEER CLUB	Memory Wall		Aloha Luau		Tinker Bells Talent Show		Connect Four Challenge		Parachute Games												
OUT AND ABOUT	Fitness Frenzy (13-17) (Nom Fee) Senses Fitness Center																				
Afternoon	1:45	2:00	2:15	2:30	2:45	3:00	3:15	3:30	3:45	4:00	4:15	4:30	4:45	5:00	5:15	5:30	5:45	6:00	6:15	6:30	6:45
FUNNELVISION	Up (PG) FunnelVision			Beauty and the Beast (G) FunnelVision						Lilo & Stitch (PG) FunnelVision											
MOVIES	Disney Nature: Chimpanzee (G) Buena Vista Theatre						Tangled (PG) Buena Vista Theatre														
CHARACTER	Hook & Smee Dk 4, Mid		Tinker Bell Lobby Atrium		Chip & Dale Dk 13, Aft		Donald Buzz Lobby Atrium		Belle Woody Lobby Atrium		Emile Lobby Atrium										
FUN FOR ALL AGES	Family Crafts - Origami La Piazza		Chip-It Golf (12+) Lobby Atrium		Mega Raffle Bingo D Lounge		Live Music with "The Dreamers" Lobby Atrium		WISHES Walt Disney Theatre												
ADULTS	Behind the Scenes Presentation Buena Vista Theatre - Gary Hoffmann		Martini Tasting (21+) Meridian (Nom. Fee)		Group Cycling Senses Fitness Center		Fab Abs Senses Fitness Center		Tequila & Margarita (21+) The Tube (Nom Fee)												
VIBE	Disney Animation			Dive into DJing		Smoothie Hour															
EDGE	Chillin' in the Edge			Anyone Can Cook		Marshmallow Olympics		Magic Playfloor		Wii Challenge											
OCEANEER LAB	Puzzle Playtime		Memory Wall		Once Upon a Time		Youth Dinner		Picture This												
OUT AND ABOUT	Basketball Challenge Goofy's Sports Deck																				
Evening	7:00	7:15	7:30	7:45	8:00	8:15	8:30	8:45	9:00	9:15	9:30	9:45	10:00	10:15	10:30	10:45	11:00	11:15	11:30	11:45	12:00
FUNNELVISION	High School Musical (G) FunnelVision			Bedtime Stories (PG) FunnelVision						The Help (PG-13) Buena Vista Theatre											
MOVIES	Tangled (PG) Buena Vista Theatre						The Help (PG-13) Buena Vista Theatre														
CHARACTER	Tiana Remy Dk 4, Mid		Mickey Emile Lobby Atrium		Pinocchio Dk 4, Mid		Belle Remy Lobby Atrium		Minnie Emile Lobby Atrium												
FUN FOR ALL AGES	Family Fusion D Lounge		Michael Holly The Tube - Juggling		WISHES Walt Disney Theatre		Live Music with "The Dreamers" Lobby Atrium		Family Karaoke D Lounge												
ADULTS	Live Piano Music with Laurence J Blackler Outlook		Live Jazz with Fine Whines La Piazza		Moments in Time Outlook		Daren Streblow The Tube - Comedy		Rock the Tube with Guest DJ Immortal The Tube												
VIBE	ESPN MNF Call It!			Pump It Up		Club 18*21 O'Gills Pub		50 Movie Quotes Trivia O'Gills Pub													
EDGE	That's Hilarious			Picture This		Anyone Can Cook: Pizza		GAGA Ball													
OCEANEER LAB	Anyone Can Cook: Cupcakes		Get the Hook		GAGA Ball																
OCEANEER CLUB	Craft Corner		Pluto's Pajama Party		Disney Animation - Creating a Character																
OUT AND ABOUT	Shuffleboard Deck 4, Starboard Side		Crafts Galore																		

Symbol for activities that will be repeated during the cruise

FOLD

Fold along the dotted lines and take me with you so you don't miss any of the fun!

FOLD

IN THE SPOTLIGHT SERIES

LOVE IT! SERIES

ADAPT UP! SERIES

CREATE & INVENT SERIES

CLUBHOUSE SERIES

STORYBOOK SERIES

MONDAY, MAY 21, 2012 - DAY AT SEA

BUENA VISTA THEATRE



8:30 a.m.
Run Time:
1 hr 43 min
Rating: G



11:00 a.m.
Run Time:
1 hr 56 min
Rating: G



3:30 p.m.
Run Time:
1 hr 18 min
Rating: G



5:45 p.m. & 8:00 p.m.
Run Time:
1 hr 40 min
Rating: PG



10:15 p.m.
Run Time:
2 hr 26 min
Rating: PG-13

Character Appearances

- MICKY MOUSE**
Deck 4, Balcony
9:15 a.m. & 10:15 a.m.
Lobby Atrium
7:30 p.m. & 9:30 p.m.
- PLUTO**
Lobby Atrium
9:30 a.m. & 10:30 a.m.
- GOOBY**
Lobby Atrium
9:30 a.m. & 10:30 a.m.
- MINNIE MOUSE**
Deck 4, Balcony
9:45 a.m. & 10:45 a.m.
Lobby Atrium
8:00 p.m. & 10:00 p.m.
- DONALD DUCK**
Lobby Atrium
11:00 a.m. & 4:45 p.m.
- DAISY DUCK**
Lobby Atrium
10:00 a.m. & 11:00 a.m.
- JAKE**
THE NEVERLAND PIRATE
Deck 4, Balcony
1:00 p.m. & 2:30 p.m.
- ALADDIN**
Lobby Atrium - 1:15 p.m.
- PETER PAN**
Lobby Atrium - 1:15 p.m.
- GENIE**
Deck 4, Balcony - 1:30 p.m.
- TINKER BELL**
Lobby Atrium
1:30 p.m. & 2:30 p.m.
- CAPTAIN JACK & MR. SMEE**
Deck 4, Balcony - 2:00 p.m.
- CHIP & DALE**
Deck 13, Aft - 3:30 p.m.
- BUZZ LIGHTYEAR**
Lobby Atrium
5:00 p.m., 7:30 p.m., & 10:00 p.m.
- REMY**
Lobby Atrium - 5:15 p.m., 7:15 p.m., & 9:45 p.m.
- PINOCCHIO**
Lobby Atrium - 5:15 p.m.
- BELLE**
Deck 4, Balcony - 8:00 p.m.
- WOODY & JESSIE**
Lobby Atrium - 5:30 p.m., 8:00 p.m. & 9:30 p.m.
- PRINCESS TIANA**
Deck 4, Balcony - 5:45 p.m. & 7:00 p.m.
- STITCH**
Lobby Atrium - 5:45 p.m.
- EMILE**
Lobby Atrium - 5:45 p.m., 7:45 p.m. & 10:15 p.m.
- SNOW WHITE**
Deck 4, Balcony - 10:00 p.m.

For details of daily Disney character appearances, refer to the character line on your Navigator Grid, or the digital character board in the Lobby Atrium.

IMPORTANT NUMBERS
7-3001
7-3000
7-1923

YOUTH ACTIVITIES THEMED EXPERIENCES

- CLUBHOUSE SERIES**
focuses on movement and features content which appeals to younger children.
- STORYBOOK SERIES**
is designed with a strong connection to the Disney classic stories.
- JUMP UP! SERIES**
includes large ground games & movement-oriented activities, and enthusiasm.
- CREATE & INVENT SERIES**
will have a tactile focus allowing children to create and admire their work.
- IT'S A SMALL WORLD NURSERY**
focuses on children's stage presence with lots of activities and enthusiasm.
- SOLOVE IT! SERIES**
are less active, but will challenge children with problem/solutions-based activities.

SHIP DIRECTORY

YOUTH ACTIVITIES	
DISNEY'S OCEANEER CLUB	DECK 5, MID 9:00 AM - 11:00 PM
DISNEY'S OCEANEER LAB	DECK 5, MID 9:00 AM - 12:00 MID
EDGE	DECK 13, MID 10:00 AM - 1:00 AM
VIBE	DECK 4, FWD 10:00 AM - 2:00 AM
IT'S A SMALL WORLD NURSERY	DECK 5, MID 9:00 AM - 11:00 PM
RECREATION	
AQUADUCK	DECK 12, MID 9:00 AM - 10:00 PM
AQUALAB	DECK 12, AFT 9:00 AM - 7:00 PM
DONALD'S POOL	DECK 11, MID 6:00 AM - 12:00 MID
GOLF/SPORTS SIMULATORS	DECK 13, AFT 9:00 AM - 6:00 PM
GOOBY GOLF	DECK 13, AFT 8:00 AM - 10:00 PM
GOOBY'S SPORTS DECK	DECK 12, AFT 8:00 AM - 6:00 PM
MICKY'S POOL	DECK 11, MID 6:00 AM - 11:00 PM
MICKY'S SLIDE	DECK 11, MID 9:00 AM - 6:00 PM
MINNIE DETECTIVE AGENCY	DECKS 2 & 5, MID 9:00 AM - 10:00 PM
NEEMO'S REEF	DECK 11, MID 9:00 AM - 7:00 PM
PORT ADVENTURES DESK	DECK 5, MID 9:00 AM - 5:00 PM
QUIET COVE POOL	DECK 11, FWD 7:00 PM - 8:30 PM
SAFELITE FALLS	DECK 13, FWD 6:00 AM - 12:00 MID
SATELITE FITNESS CENTER	DECK 11, FWD 6:00 AM - 6:00 PM
GENERAL INFORMATION	DECK 11, FWD 6:30 AM - 10:00 PM
24 HOURS	
ABR-CABE	DECK 11, AFT 12:00 PM - 3:00 PM
ADVENTURES BY DISNEY	DECK 4, MID 6:30 PM - 10:00 PM
DISNEY VACATION CLUB	DECK 4, MID 9:00 AM - 12:30 PM
FUTURE CRUISE SALES DESK	DECK 4, MID 9:00 AM - 12:00 PM
GUEST SERVICES	DECK 3, MID 3:00 PM - 6:00 PM
MEDICAL HEALTH CENTER	DECK 1, FWD 9:30 AM - 11:00 AM
PORT & SHOPPING DESK	DECK 4, MID 10:00 AM - 12:00 PM
PRELUDES	DECK 3, FWD 7:30 PM - 8:30 PM
SENSES SPA AND SALON	DECK 4, MID 5:45 PM - 6:30 PM
SHUTTERS PHOTO GALLERY	DECK 4, MID 8:00 AM - 10:00 PM
SHUTTERS DIGITAL	DECK 4, MID 10:00 AM - 11:00 PM
SHOPPING	
BIBBIDI BOBBIDI BOUTIQUE	DECK 5, MID 9:00 AM - 9:00 PM
MICKY'S MAINSAIL	DECK 3, FWD 9:00 AM - 11:00 PM
QUACKS	DECK 11, MID 10:00 AM - 4:00 PM
SEA TREASURES	DECK 3, FWD 9:00 AM - 11:00 PM
VISTA GALLERY	DECK 4, MID 10:00 AM - 10:00 PM
WHITECAPS	DECK 3, FWD 9:00 AM - 11:00 PM
WHATITIS	DECK 11, MID 10:00 AM - 4:00 PM

DINNER MENUS

OF THE DAY DRINK FORECAST

Animators' Palace, Pacific Rim, High Tide (Alcoholic)
Enchanted Garden, Commanda Milder, Royal Court, Fresh Diner, Flamingo Cream House (Non-Alcoholic)
Dining Theme: 5:45 & 8:15 p.m. High: 78°F-76°C

Evening Atmos: Cruise Casual

DINING & LOUNGES

BREAKFAST	
CABANAS CONTINENTAL	DECK 11, AFT 7:00 AM - 7:30 AM
CABANAS	DECK 11, AFT 7:30 AM - 10:45 AM
ENCHANTED GARDEN	DECK 2, MID 9:00 AM - 10:45 AM
ROYAL COURT	DECK 3, MID 8:00 AM - 9:30 AM
LUNCH	
CABANAS	DECK 11, AFT 12:00 PM - 2:00 PM
ENCHANTED GARDEN	DECK 2, MID 12:00 PM - 1:30 PM
FILMORE'S FAVORITES	DECK 11, MID 11:00 AM - 6:00 PM
LUIGI'S PIZZA	DECK 11, MID 11:00 AM - 6:00 PM
ROYAL COURT	DECK 3, MID 12:00 PM - 1:30 PM
TOW MATHER'S GRILL	DECK 11, MID 11:00 AM - 11:00 PM
DINNER	
ANIMATOR'S PALACE	DECK 3, AFT 5:45 PM & 8:15 PM
ENCHANTED GARDEN	DECK 2, MID 5:45 PM & 8:15 PM
ROYAL COURT	DECK 3, MID 5:45 PM & 8:15 PM
CABANAS TABLE SERVICE	DECK 11, AFT 6:30 PM - 8:30 PM
LATE NIGHT NACHOS	
LA PIAZZA (18+)	DECK 4, AFT 10:45 PM - 11:45 PM
LUIGI'S PIZZA	DECK 11, MID 9:30 PM - 12:30 AM
ADDED FEATURES	
BEVERAGE STATION	DECK 11, MID 24 HOURS
EYE SCREAM	DECK 11, MID 11:00 AM - 11:00 PM
ROOM SERVICE	DIAL 0 24 HOURS
ENTERTAINMENT - LOUNGES - BARS	
Adults must be 21 and order to consume alcoholic beverages.	
BOIN VOYAGE	DECK 3, MID 10:30 AM - 11:00 PM
COVE BAR (18+)	DECK 11, FWD 10:00 AM - 10:30 PM
COVE CAFE (18+)	DECK 11, FWD 7:00 AM - 12:00 MID
CURRENTS (18+)	DECK 13, FWD 10:00 AM - 11:00 PM
D LOUNGE	DECK 4, MID SHOWTIMES
FRODOZE TREATS	DECK 11, MID 11:00 AM - 11:00 PM
LA PIAZZA	DECK 4, AFT 12:30 PM - 12:00 MID
MERIDIAN (18+)	DECK 12, AFT 5:00 PM - 12:00 MID
O'GILIS PUB	DECK 4, AFT 12:00 PM - 11:30 PM
OOH LA LA (18+)	DECK 4, AFT 5:00 PM - 12:00 MID
OUTLOOK	DECK 14, MID
SKYLINE (18+)	DECK 4, AFT 5:00 PM - 12:00 MID
THE TUBE (18+)	DECK 4, AFT 10:00 PM - 2:00 AM
VISTA CAFE	DECK 4, MID 7:30 AM - 10:00 PM
WAVES	DECK 12, AFT 10:30 AM - 6:30 PM

Consumers who order raw or partially cooked, ready-to-eat beef of animal origin, are hereby informed that the food is not sufficiently cooked to ensure its safety.

GOOBY'S SPORTS

Digital Simulators

Sports Simulator (Baseball, Baseball, Hockey, or Soccer) \$25 / half hr, \$45 / hr
\$12 / half hr, \$20 / hr

Reservations can be made at the Port Adventures Desk, Deck 3, Midship or at the Simulators, Deck 13, Aft