

PERSONAL NAVIGATOR

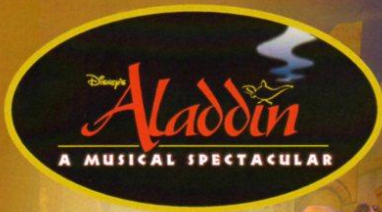


Sunrise: 6:21 a.m. Sunset: 7:30 p.m.
Evening Attire: Formal

Sunday: Partly Cloudy High: 77°F/25°C
Monday: Partly Cloudy High: 78°F/26°C

SUNDAY, MAY 20, 2012

DAY AT SEA

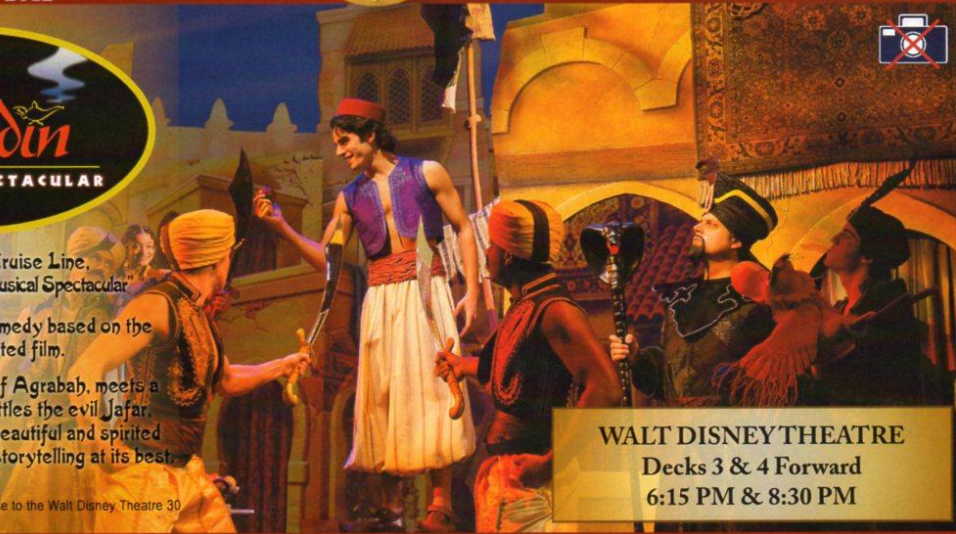


New to Disney Cruise Line,
"Disney's Aladdin - A Musical Spectacular"

A fast-paced, musical comedy based on the beloved animated film.

Aladdin, the "street rat" of Agrabah, meets a wise-cracking Genie, battles the evil Jafar, and falls in love with the beautiful and spirited Princess Jasmine. Disney storytelling at its best.

Assistance available at the entrance to the Walt Disney Theatre 30 minutes prior to show time.



WALT DISNEY THEATRE
Decks 3 & 4 Forward
6:15 PM & 8:30 PM

Disney FANTASY Fun Facts

Tonnage: 130,000 Gross Tons

Height: 216 Feet

Length: 1115 Feet

Important Dates

Name Announcement: March 10, 2009

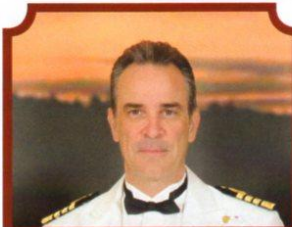
Steel Cutting: March 16, 2010

Keel Laying: February 11, 2011

Delivery: February 9, 2012

While the cute baby elephant, Dumbo serves as a fantastic stern character, in real life he would have to gather 24,266 other adult male African elephants to match the weight of the Disney Fantasy.

Almost 4 football fields in length, the Disney Fantasy is longer than the height of the Eiffel Tower in Paris (1,063 feet). She is also longer than the height of New York City's famous Chrysler building (1,047 feet).



CAPTAIN'S RECEPTION

Enjoy an exclusive photo with Captain Marco, meet some of the ship's officers and enjoy a cocktail, with live music provided by Fine Whines.

5:00 & 7:30 p.m.
Lobby Atrium,
Deck 3, Midship

Don't Miss:

Longest Drive

Golf Simulator (18+), Deck 13, Aft - 9:00 a.m.
Challenge your fellow cruisers, and the Golf Simulator, and see who has the longest drive!

Disney Animation: Creating a Character

D Lounge, Deck 4, Midship - 9:45 a.m.
Go behind the scenes at Walt Disney Animation Studios as Walt Disney himself talks about his most famous characters, then learn the basic techniques of drawing Mickey and Donald in this fun and interesting enrichment program.

Juggling Workshop

D Lounge (6+), Deck 4, Midship - 1:15 p.m.
Michael Holly teaches you the basics of juggling in this fun family event.

Family Cabaret: Daren Streblov

The Tube, Deck 4, Aft - 7:30 p.m.
Featuring the Comedy of Daren Streblov as he entertains the entire family in this Cabaret Style show.



Visit Shutters for all your photographic needs, from Digital cameras, batteries, binoculars and accessories. All photos taken during this cruise will be available for viewing on our photo kiosks at Shutters Digital, as well as in your photo folder at Shutters, Deck 4, Midship.

DINNER MENU

Animator's Palate : Pacific Rim Cuisine
Enchanted Garden : Continental Market Cuisine
Royal Court : French Cuisine

DRINK OF THE DAY

Yellow Bird (Alcoholic)
Coco Bali (Non Alcoholic)

IMPORTANT NUMBERS

Fire/Security: 7-3001
Medical Emergency: 7-3000
Health Center: 7-1923

FAMILY ACTIVITY HIGHLIGHTS

WAKE UP WITH DISNEY JUNIOR

D Lounge, Deck 4, Midship - 9:00 a.m.

What happens when you experience unlimited fun with your favorite Disney Junior shows? An exciting dance party designed especially for pre-schoolers ages seven and under.



JACK-JACK'S INCREDIBLE DIAPER DASH

Lobby Atrium, Deck 3, Midship - 11:00 a.m.

Calling all baby cruisers! The Disney Fantasy's babies take to the mat to see who's the fastest crawler of the seven seas!

FAMILY CRAFTS - SCRAPBOOKING

D Lounge, Deck 4, Midship - 12:15 p.m.

Start creating and collecting your cruise memories at this scrapbooking session. Your Cruise Staff will be on hand with a special gift for all attendees.

PORT AND SHOPPING SHOW

Buena Vista Theatre, Decks 4 & 5, Forward - 1:30 p.m.

Join your Port & Shopping Guides Johan & Marissa to learn about the incredible tax and duty free shopping in our ports of call this cruise. FREE charm bracelet for all in attendance!



ANYONE CAN COOK - APPLE STRUDEL

D Lounge, Deck 4, Midship - 2:15 p.m.

From our galley to yours. Join our chefs as they show you how to prepare delicious dishes. Today's Menu - Apple Strudel

FAMILY SUPERSTAR KARAOKE

D Lounge, Deck 4, Midship - 7:15 p.m. & 10:45 p.m.

Join your Cruise Staff in D Lounge tonight and sing along to your favorite song - fun for everyone.

FORMAL NIGHT AFTER PARTY

D Lounge, Deck 4, Midship - 9:45 p.m.

Join your Cruise Staff and "The Dreamers" as we continue the party, with special appearances from the world famous Disney Characters.



ADULT ACTIVITY HIGHLIGHTS

SENSES SPA FITNESS CLASSES & SEMINARS

Sunrise Stretch - Senses Fitness Center - 7:00 a.m.

Fab Abs - Senses Fitness Center - 7:30 a.m. & 5:00 p.m.

Body Sculpt Boot Camp (Nom Fee) - Senses Fitness Center - 9:00 a.m.

Fitness Frenzy (13-17) (Nom Fee) - Senses Fitness Center - 10:00 a.m.

Salon Makeover Seminar - Senses Fitness Center - 10:30 a.m.

Introduction to Acupuncture - Outlook - 11:15 a.m.

Detox For Health and Weight Loss - Outlook - 12:00 p.m.

How to Increase your Metabolism - Outlook - 2:00 p.m.

Group Cycling - Senses Fitness Center - 4:00 p.m.



TASTING CLASSES

Champagne Tasting (21+) - Ooh La La - 12:00 p.m.

Old World Wine Tasting (21+) - Ooh La La - 2:00 p.m.

Cognac Tasting (21+) - Cove Cafe - 9:45 p.m.

Please make reservations for tastings at Guest Services for a nominal fee.

Tasting Seminars are only for Guest's 21 and Older.

CLUB
18*21

MIX AND MINGLE

Cove Cafe, Deck 11, Forward - 12:15 p.m.

MIXER

O'Gills Pub, Deck 4, Aft - 10:00 p.m.



ESPN DREAM TEAM DRAFT DAY - BASEBALL

O'Gills Pub, Deck 4, Aft - 10:15 a.m.

Play ball! Join the "Commissioner" and engage in this interactive fantasy baseball draft unlike anything you've ever seen! Can YOU draft the greatest baseball team of All-Time?

ART OF THE THEME SHOW TOUR

Meet at Meridian, Deck 12, Aft - 3:00 p.m.

Join us on a guided ship tour and discover the key ingredients that makes the Disney Fantasy cruise ship one-of-a-kind.

(Repeated throughout the cruise)



LONDON ROCKS

The Tube, Deck 4, Aft - 10:45 p.m.

Hop onboard and hit the dance floor as we take you on a ride through the charts, partying it up to some of the hottest British hits! With a special performance by the Walt Disney Theatre Performers.

KICK START BINGO

D Lounge, Deck 4, Midship

Card Sales - 10:45 a.m.

Game Starts - 11:00 a.m.

Join us for our first session of Jackpot Bingo, with four CASH prizes to be won. Everyone in attendance will receive a FREE bingo card for one of the four cash prize games. Plus your chance to win a Diamond Pendant, courtesy of



SENSES SPA BINGO

D Lounge, Deck 4, Midship

Card Sales - 3:30 p.m.

Game Starts - 3:45 p.m.

Four CASH prize up for grabs plus great spa prizes to be won, including a mini facial and massages, courtesy of the Senses Spa and Salon.

YOUTH ACTIVITIES HIGHLIGHTS

DINE & PLAY

A convenience for families dining at 8:15 p.m., our Youth Activities Counselors will be available at 9:15 p.m. at the entrance of Royal Court, Enchanted Garden and Animator's Palate dining rooms to bring registered children to join the fun in the Youth Activity areas.

CLUBHOUSE KIDS

Is a structured play time offered during secured programming, and is recommended for children ages 3-7. During Clubhouse Kids time in the Oceaneer Club Counselors will be able to interact and encourage the youngest cruisers in specific activities, ensuring they are engaged.



Deck 5 Midship (7-5864) 9:00 a.m. - 11:30 p.m.

OPEN HOUSE

8:00 - 9:00 a.m.

Your chance to see our toddler space, It's A Small World Nursery.



Deck 5 Midship (7-1440) (3-12 years old) 9:00 a.m. - 12:00 mid

TOY STORY BOOT CAMP

10:15 a.m.

Join Corporal Green in our own version of boot camp as we learn how to have fun - The Toy Story way!

HEFFALUMP EXPODISHUN

1:00 p.m.

The Heffalump is missing! Help us find him before the Woozles do!



Deck 5 Midship (7-1445) (3-12 years old) 9:00 a.m. - 1:00 a.m.

STITCH'S ADVENTURE SQUAD

9:30 a.m.

Stitch, everyone's favorite alien, is making an appearance to share some of his mischievous games and activities.

SUPER SLOPPY SCIENCE - EGGSPERIMENTS

10:45 a.m.

Join Professor Make-O-Mess in some of the most extreme experiments you will ever see in the world of Super Sloppy Science!



Deck 13 Midship (41-14426) (11-14 years old) 10:00 a.m. - 1:00 a.m.

THAT'S HILARIOUS

7:45 p.m.

Ever wanted to show off your comedy skills? Then be a part of the cast for the crazy improv show "That's Hilarious" and put on a live show for your family and friends.

MIRROR, MIRROR GAME SHOW

11:45 p.m. - D Lounge

Join the Magic Mirror and Dopey in the fairest game show of them all, Mirror, Mirror. There's trivia, singing and even a relay race. Hi Ho, Hi Ho, it's off to play we go!



Entrance on Deck 4 Forward (7-9418) (14-17 years old) 10:00 a.m. - 2:00 a.m.

ZOMBIFIED

2:00 p.m.

A big movie producer is looking for a few good zombies to help him film the finale to his latest masterpiece, Zombified.

BUENA VISTA THEATRE

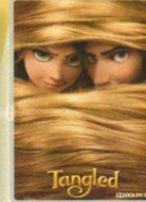
Today's Movies



9:00 a.m.
Run Time:
1 hr 18 min
Rating: G



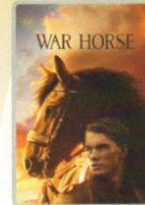
10:45 a.m.
Run Time:
1 hr 43 min
Rating: PG



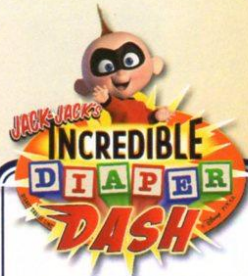
3:00 p.m.
Run Time:
1 hr 40 min
Rating: PG



5:15 p.m. & 8:00 p.m.
Run Time:
2 hr 12 min
Rating: PG-13



10:45 p.m.
Run Time:
2 hr 26 min
Rating: PG-13



Calling all baby cruisers! The Disney Fantasy's babies take to the mat to see who's the fastest crawler of the seven seas!

**Lobby Atrium,
Deck 3, Midship
11:00 a.m.**



ADULT CABARET

Featuring the Comedy & Juggling of Michael Holly, as he entertains you in this adult Cabaret-Style show.

**The Tube (18+),
Deck 4, Aft
10:15 p.m.**

YOUTH ACTIVITIES OPEN HOUSE

Open House is an opportunity for all to come and participate in a variety of exciting activities and free time in the Oceaneer Club, Lab, Edge and Vibe throughout the cruise. During these times secured programming will still be offered in the other venue for those looking to check their children into care.

MORE TO ENJOY WHILE ONBOARD



ADVENTURES BY DISNEY - HELLO WORLD

Join us for a special presentation with an Adventure Guide to learn what traveling with Adventures by Disney is all about. See our Adventure Guide on Deck 4, Midship, for more information and take advantage of a 10% discount off your next adventure!




PLAN YOUR NEXT CRUISE

Already dreaming of your next magical cruise? Save 10% off most categories and receive an Onboard Credit for your next cruise by booking while onboard. Stop by the Future Cruise Sales Desk, Deck 4, Midship, or call extension 7-2848 to learn more.



PORT AND SHOPPING INFORMATION


Join your Shopping Guides Johan & Marissa to learn about the incredible tax & duty free shopping in St. Maarten & St. Thomas. All in attendance will receive a FREE Caribbean charm bracelet, ship charm & be entered to win a Diamond Pendant. 1:30 p.m. Buena Vista Theatre, Decks 4 & 5, Forward.



ACUPUNCTURE

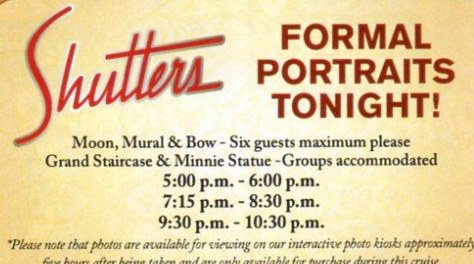
Acupuncture allows your body to heal itself. Acupuncture is comforting to the mind and body and has been proved to be effective over 100 conditions. \$150 for 60 minutes.

Call Senses Spa & Salon, 7-1465



BIBBIDI BOBBIDI BOUTIQUE

Becoming the princess of your dreams creates memories for a lifetime. Where Fairy Godmothers in training are ready with Pixie Dust and Magic! Make your reservations for princess makeovers and the Pirate League today. Limited space available. Bibbidi Bobbidi Boutique is located on Deck 5, Midship, or call ext. 9438 to make a reservation.



FORMAL PORTRAITS TONIGHT!

Moon, Mural & Bow - Six guests maximum please
Grand Staircase & Minnie Statue - Groups accommodated

5:00 p.m. - 6:00 p.m.
7:15 p.m. - 8:30 p.m.
9:30 p.m. - 10:30 p.m.

**Please note that photos are available for viewing on our interactive photo kiosks approximately five hours after being taken and are only available for purchase during this cruise.*

ONBOARD AIRLINE CHECK IN

If you would like to have your boarding passes printed for you onboard and have your luggage taken to the airport for you, register before Wednesday. If you have a Disney Cruise Line airport transfer to Orlando International Airport and fly with one of the participating airlines, stop at Guest Services, Deck 3, Midship, to register.

SURF @ SEA

\$0.75 per minute, or save money by buying blocks of time. \$55.00 for 100 minutes, \$100.00 for 250 minutes and \$150.00 for 500 minutes. Wireless information sheets are available at Guest Services, Deck 3, Midship.

Please note: Due to satellite connectivity, onboard internet service will be noticeably slower than you may be accustomed to and may at times be interrupted or unavailable.

ON DEMAND TV

Watch Disney movies, Hollywood features, ABC Shows, and even captioned content, plus much more "On Demand" for FREE in the comfort of your stateroom! Bookmark your movie and come back to watch it later. Press MENU on your stateroom television remote control, and follow the prompts.



Port Adventures provide you and your family with the very best recreation, leisure and sightseeing in St. Maarten, St. Thomas and Castaway Cay. Whether sailing into the horizon on the Golden Eagle Catamaran, exploring coral reefs on the Captain Nautica Snorkeling Expedition, flying high on a parasailing adventure or just kicking back and relaxing on an Island tour. Whatever it is you choose to do, there is adventure waiting for you in each port. Visit our friendly Port Adventures Team located Deck 5, Midship, for reservations and questions about these and many other offerings.

SHOPPING

ALBERTO INFORMATIVE TANZANITE SEMINAR.

Hosted by expert, Tanzanite Tara. Enjoy a short, fun and fascinating seminar on the history of Tanzanite. Join Tara for 30 minutes in Whitecaps, Deck 3, Forward at 12:30 p.m.

ALBERTO TANZANITE UNVEILING

You are cordially invited to see the House of Tanzanite unveiling in Whitecaps at 1:00 p.m. One time only unveiling of a massive selection of Tanzanite, one of the rarest stones in the world. Discover all new tanzanite designs and styles, at exceptional duty and tax free savings. Affordable pendants to luxurious tanzanite rings, in exclusive, one of kind designs. Whitecaps, Deck 3, Forward.

DOONEY & BOURKE

Visit Whitecaps, Deck 3, Forward for our exclusive Disney Cruise Line Dooney & Bourke Collection. Now with 25% off on selected lines. You can find handbags, wallets and wristlets.

GREAT OFFERS ONBOARD

Receive a Disney Cruise Line beach towel for \$14.95 with any merchandise purchase of \$30 or more and/or receive a Disney Cruise Line duffel bag for \$24.95 with any merchandise purchase of \$50 or more. Available in Mickey's Mainsail, Sea Treasures & Whitecaps, Deck 3, Forward. Offer valid only while supplies last.

WHOZITS AND WHATZITS

It's your next door shop while enjoying the sun and the pool. Come and visit us for all your AquaDuck souvenirs, swim wear and accessories! Deck 11, Midship, available from 10:00 a.m. to 4:00 p.m.

FOSSIL SUNGLASSES

It sure is bright out on deck so be sure to stop by Whitecaps and check out the latest in fashion sunglasses. Deck 3, Forward.

IMPORTANT INFORMATION

Security Notice

All Guests (including children) who wish to disembark the ship are required to present their Key to the World card at the gangway. A photo ID is also required for those Guests who are 18 years of age or older. Guests under the age of 18 are required to have a Parent, Guardian or other responsible adult sign an authorization form at the time it is given out if they wish to go ashore unaccompanied. Authorization forms are available at the gangways and Guest Services.

Please Note:

Please remember to use plenty of sunscreen and mosquito repellent when venturing ashore.

Cold and Flu Reminder

Please wash hands frequently and thoroughly, particularly before meals. Contact the Health Center by dialing 7-1923, should anyone in your party become ill.

Corridor Quiet Hours

As a courtesy to all our Guests, please recognize quiet hallway hours from 10:00 p.m. til 8:00 a.m.

Inclement Weather

For the safety of all Guests, outdoor events may be changed due to unforeseen weather conditions.

Environmental Message

With Disney's commitment to the Environment, please refrain from throwing anything over the Ship's side. Thank you!

No Reserved Seats Policy

As a courtesy to all our Guests, we kindly advise that the saving of seats is not permitted in the Walt Disney Theatre, and the saving of the sun loungers is not permitted on Deck 11, 12, and 13. Items left unattended will be returned to lost and found at Guest Services, Deck 3 Midship.

Smoking

For the comfort of our guests the following areas are designated as Smoking areas: - Promenade Deck (Deck 4), smoking is permitted Port Side, Aft only from 6:00 p.m. to 6:00 a.m.
- Currents - Deck 13, Forward, Port Side.
- Meridian Bar - Deck 12, Aft, Port Side, outside.
-Smoking is permitted on stateroom verandahs.
-Smoking is prohibited inside all guest staterooms. Guests found smoking in their staterooms will be charged a \$250 stateroom recovery fee.

Walt Disney Theatre

Theatrical performances may use artificial fog, strobe lights, pyrotechnics and other special effects. For the safety of our performers and the comfort of those around you, the use of any photography, video recording device or any electronic equipment is prohibited.

Verandah Safety

Please do not leave any combustible materials on your balcony when not present in your stateroom for safety reasons.

Morning	8:30	8:45	9:00	9:15	9:30	9:45	10:00	10:15	10:30	10:45	11:00	11:15	11:30	11:45	12:00	12:15	12:30	12:45	1:00	1:15	1:30
FUNNELVISION	Tarzan (PG) FunnelVision							The Lion King (G) FunnelVision					Movie Challenge Poolside FunnelVision								
MOVIES	Disney Signature: Chimpanzee (G) Buena Vista Theatre										The Muppets (PG) Buena Vista Theatre										
CHARACTER			Buzz Lobby Atrium		Donald Lobby Atrium		Chip & Dale Lobby Atrium		Donald Lobby Atrium		Princess Gathering Lobby Atrium										
FUN FOR ALL AGES	Wake Up With Disney Junior D Lounge		Walking Ship Tour Meet at Preludes		Family Crafts - Origami Flowers La Piazza		Bingo Pre Sales D Lounge		Kick Start BINGO D Lounge		Family Crafts - Scrapbooking D Lounge		Juggling Workshop (6+) D Lounge								
	Disney Vacation Club Members Celebration The Tube		Disney Animation: Creating a Character D Lounge		Interdenominational Service Outlook		Jack Jacks Diaper Dash Lobby Atrium		Tanzanite Seminar Whitecaps		Disney Vacation Club Group Preview The Tube		Shopping Show Buena Vista Theatre								
ADULTS	Friends of Bill W. Outlook		Longest Drive Golf Simulator		ESPN Dream Team Draft Day - Baseball O'Gills Pub		Introduction to Acupuncture Outlook		Champagne Tasting (21+) (Ooh La La (Nom fee))		70's Music Challenge O'Gills Pub										
	Xbox Kinect - Wipeout Challenge O'Gills Pub		Salon Makeover Seminar Senses Fitness Center		Crafts - Tile Coasters O'Gills Pub		Club 18*21 Cove Cafe														
VIBE	Open House		Coffee Break																		
EDGE	Open House		Hangin' in Edge		Magic Show																
OCEANEER LAB	Stitch's Adventure Squad		Super Sloppy Science - Eggsperiments										Anyone Can Cook								
OCEANEER CLUB	Open House		Toy Story Boot Camp		Memory Wall		Wii Challenge		Youth Lunch				Heffalump Expodishun								
OUT AND ABOUT	Magic Playfloor		Fitness Freacy (13-17) (Nom Fee) Senses Fitness Center										Matinee Movie								

Afternoon	1:45	2:00	2:15	2:30	2:45	3:00	3:15	3:30	3:45	4:00	4:15	4:30	4:45	5:00	5:15	5:30	5:45	6:00	6:15	6:30	6:45	
FUNNELVISION						Brother Bear (G) FunnelVision					A Bug's Life (G) FunnelVision											
MOVIES						Tangled (PG) Buena Vista Theatre					John Carter (PG-13) Buena Vista Theatre											
CHARACTER	Minnie Dk 4, Mid		Max Dk 13, Aft		Pluto Dk 13, Aft		Chip & Dale Dk 4, Mid		Minnie Dk 4, Mid		Minnie Dk 4, Mid		Donald Dk 4, Mid									
FUN FOR ALL AGES	Port and Shopping Show Buena Vista Theatre		Live Music with "The Dreamers" Deck 12, Forward		Bingo Pre Sales D Lounge		Senses Spa BINGO D Lounge		Captain's Reception Lobby Atrium												Walt Disney Theatre	
	Shuffleboard Deck 4, Port Side		Anyone Can Cook - Apple Strudel D Lounge		Paper Plane Making La Piazza		Adventures By Disney Presentation The Tube		Live Jazz with Fine Whines Lobby Atrium													
ADULTS	Ultimate Disney Trivia La Piazza		Art of The Theme Show Tour Meet at Meridian		Group Cycling Senses Fitness Center		Fab Abs Senses Fitness Center															
	Old World Wine Tasting (21+) Ooh La La (Nom fee)		Rob Thompson on Guitar Satellite Falls																			
VIBE	Zombified				Dive into Djing																	
EDGE	Flubber				Dodgeball																	
OCEANEER LAB	Anyone Can Cook		Get the Hook		Animation Cells																Open House	
	Wii Challenge																				Stop The Bus	
OCEANEER CLUB	Matinee Movie		Cruisin' with Crush		Puzzle Playtime																Craft Corner	
OUT AND ABOUT	Hold the Phone Deck 2, Midship																					

Evening	7:00	7:15	7:30	7:45	8:00	8:15	8:30	8:45	9:00	9:15	9:30	9:45	10:00	10:15	10:30	10:45	11:00	11:15	11:30	11:45	12:00	
FUNNELVISION						Finding Nemo (G) FunnelVision					Race to Witch Mountain (PG) FunnelVision											
MOVIES						John Carter (PG-13) Buena Vista Theatre					War Horse (PG-13) Buena Vista Theatre											
CHARACTER	Minnie Dk 4, Mid		Ariel Preludes		Donald Dk 4, Mid				Minnie Dk 4, Mid		Mickey Dk 4, Mid		Minnie Dk 4, Mid									
FUN FOR ALL AGES	Family Superstar Karaoke D Lounge		Captain's Reception Lobby Atrium				Fine Whines LIVE Lobby Atrium		Formal Night After Party D Lounge		Family Superstar Karaoke D Lounge											
	Daren Streblov The Tube																					
ADULTS	Live Piano Music with Laurence J. Blackler La Piazza				Cognac Tasting (21+) Cove Cafe (Nom fee)		Michael Holly The Tube		London Rocks The Tube		Going Underground with Guest DJ Immortal The Tube											
	ESPN Dream Team Draft Day - Basketball		Smoothie Hour		Pump It Up		That's Hilarious														Mirror, Mirror	
EDGE	That's Hilarious																				Mirror, Mirror	
OCEANEER LAB	Open House		Disney Animation - Creating a Character		Super Sloppy Science - Flubber		Pictionary															
	Magic Playfloor																				GAGA Ball	
OCEANEER CLUB	Once Upon a Time		Hide & Seek		Make Your Own Wand																Movie Time	
OUT AND ABOUT	Table Tennis Goody's Sports Deck																					

Symbol for activities that will be repeated during the cruise

FOLD

Fold along the dotted lines and take me with you so you don't miss any of the fun!

FOLD

IN THE SPOTLIGHT SERIES
SECURE IT SERIES

CLAMP UP SERIES
CREATE & INVENT SERIES

CLUBHOUSE SERIES
STOREROOM SERIES

SUNDAY, MAY 20, 2012 - DAY AT SEA

BUENA VISTA THEATRE



9:00 a.m.
Run Time: 1 hr 18 min
Rating: G



10:45 a.m.
Run Time: 1 hr 43 min
Rating: PG



3:00 p.m.
Run Time: 1 hr 40 min
Rating: PG



5:15 p.m. & 8:00 p.m.
Run Time: 2 hrs 26 min
Rating: PG-13



10:45 p.m.
Run Time: 2 hrs 26 min
Rating: PG-13

Character Appearances

- MICKEY MOUSE**
Deck 4, Balcony
9:15 a.m., 10:15 a.m., 5:30 p.m., 7:45 p.m. & 9:45 p.m.
- CHIP & DALE**
Lobby Atrium
9:30 a.m. & 10:30 a.m.
- BUZZ LIGHTYEAR**
Lobby Atrium
9:30 a.m. & 10:30 a.m.
- MINNIE MOUSE**
Deck 4, Balcony
9:45 a.m., 10:45 a.m., 5:00 p.m., 7:15 p.m. & 10:15 p.m.
- WOODY & JESSIE**
Lobby Atrium
10:00 a.m. & 11:00 a.m.
- DONALD DUCK**
Lobby Atrium
10:00 a.m. & 11:00 a.m.
- GOOXY**
Deck 13, Aft - 1:00 p.m.

For details of daily Disney character appearances, refer to the character line on your Navigator Grid, or the digital character board in the Lobby Atrium.

Fire/Security: 7-3001
Medical Emergency: 7-3000
Health Center: 7-1923

IMPORTANT NUMBERS

YOUTH ACTIVITIES THEMED EXPERIENCES

- CLUBHOUSE SERIES**
focuses on movement and features content which appeals to younger children.
- STORYBOOK SERIES**
is designed with a strong connection to the Disney classic stories.
- KUMPLUP! SERIES**
includes large ground games & movement-oriented activities.
- CREATE & INVENT SERIES**
will have a tactile focus allowing children to create and admire their work.
- WIN THE SPOTLIGHT SERIES**
focuses on children's stage presence with lots of activities and enthusiasm.
- SCULPTURE IT! SERIES**
are less active, but will challenge children with problem/solutions-based activities.

SHIP DIRECTORY

YOUTH ACTIVITIES	
DISNEY'S OCEANEER CLUB	DECK 5, MID 9:00 AM - 12:00 MID
DISNEY'S OCEANEER LAB	DECK 5, MID 9:00 AM - 1:00 AM
EDGE	DECK 13, MID 10:00 AM - 1:00 AM
VIBE	DECK 4, FWD 10:00 AM - 2:00 AM
IT'S A SMALL WORLD NURSERY	DECK 5, MID 9:00 AM - 11:30 PM

RECREATION	
AQUADUCK	DECK 12, MID 9:00 AM - 10:00 PM
AQUALAB	DECK 12, AFT 9:00 AM - 7:00 PM
DONALD'S POOL	DECK 11, MID 6:00 AM - 12:00 MID
GOLF/SPORTS SIMULATORS	DECK 13, AFT 9:00 AM - 6:00 PM
GOODY GOLF	DECK 13, AFT 8:00 AM - 10:00 PM
GOOXY'S SPORTS DECK	DECK 12, AFT 8:00 AM - 6:00 PM
GOOXY'S POOL	DECK 11, MID 6:00 AM - 11:00 PM
MICKY'S SLIDE	DECK 11, MID 9:00 AM - 6:00 PM
MIDSHIP DETECTIVE AGENCY	DECKS 2 & 5, MID 9:00 AM - 9:00 PM
NEMO'S REEF	DECK 11, MID 9:00 AM - 7:00 PM
PORT ADVENTURES DESK	DECK 5, MID 9:00 AM - 5:00 PM
QUIET COVE POOL	DECK 11, FWD 6:00 AM - 8:30 PM
SATELLITE FALLS	DECK 13, FWD 6:00 AM - 6:00 PM
SENSES FITNESS CENTER	DECK 11, FWD 6:30 AM - 10:00 PM

GENERAL INFORMATION	
ARE-CADE	DECK 11, AFT 24 HOURS
ADVENTURES BY DISNEY	DECK 4, MID 12:00 PM - 3:00 PM
DISNEY VACATION CLUB	DECK 4, MID 9:30 PM - 10:00 PM
FUTURE CRUISE SALES DESK	DECK 4, MID 9:00 AM - 12:00 MID
	3:00 PM - 6:00 PM
	7:30 PM - 8:30 PM
GUEST SERVICES	DECK 3, MID 24 HOURS
MEDICAL HEALTH CENTER	DECK 1, FWD 9:30 AM - 11:00 AM
	4:30 PM - 7:00 PM
PORT & SHOPPING DESK	DECK 4, MID 7:30 PM - 8:30 PM
PRELUDES	DECK 3, FWD 5:45 PM - 6:30 PM
	8:00 PM - 8:45 PM
SENSES SPA AND SALON	DECK 11, FWD 8:00 AM - 10:00 PM
SHUTTERS PHOTO GALLERY	DECK 4, MID 10:00 AM - 1:00 PM
SHUTTERS DIGITAL	DECK 4, MID 5:00 PM - 11:00 PM
	24 HOURS

SHOPPING	
BIBBIDI BOBBIDI BOUTIQUE	DECK 5, MID 9:00 AM - 9:00 PM
MICKY'S MAINSAIL	DECK 3, FWD 9:00 AM - 10:00 PM
QUACKS	DECK 11, MID 10:00 AM - 4:00 PM
SEA TREASURES	DECK 3, FWD 9:00 AM - 10:00 PM
VISTA GALLERY	DECK 4, MID 10:00 AM - 10:00 PM
WHITECAPS	DECK 3, FWD 9:00 AM - 10:00 PM
WHOZIS & WHATZIS	DECK 11, MID 10:00 AM - 4:00 PM

DINNER MENUE
Amateur's Plate: Pacific Rim Cuisine
Royal Court: French Cuisine
Dining Times: 5:45pm & 8:15pm
(Non-Alcoholic)**DRINK OF THE DAY**
Yellow Blood (Alcoholic)
Coors Ball (Non-Alcoholic)
High: 77°F/25°C
Monday Party Cloudy
High: 78°F/26°C

WEATHER FORECAST
Sunday: Partly Cloudy
High: 77°F/25°C
Monday: Partly Cloudy
High: 78°F/26°C

Evening Attire: Formal Attire

DINING & LOUNGES

RESTAURANT	DECK	TIME
CABANAS CONTINENTAL	DECK 11, AFT	7:00 AM - 7:30 AM
CABANAS	DECK 11, AFT	7:30 AM - 10:45 AM
ENCHANTED GARDEN	DECK 2, MID	9:00 AM - 10:45 AM
ROYAL COURT	DECK 3, MID	8:00 AM - 9:30 AM

LUNCH	DECK	TIME
CABANAS	DECK 11, AFT	12:00 PM - 2:00 PM
ENCHANTED GARDEN	DECK 2, MID	12:00 PM - 1:30 PM
FILMORE'S FAVORITES	DECK 11, MID	11:00 AM - 6:00 PM
LUIGI'S PIZZA	DECK 11, MID	11:00 AM - 6:00 PM
ROYAL COURT	DECK 3, MID	12:00 PM - 1:30 PM
TOW MATE'S GRILL	DECK 11, MID	11:00 AM - 11:00 PM

DINNER	DECK	TIME
ANIMATOR'S PALATE	DECK 3, AFT	5:45 PM & 8:15 PM
ENCHANTED GARDEN	DECK 2, MID	5:45 PM & 8:15 PM
ROYAL COURT	DECK 3, MID	5:45 PM & 8:15 PM
CABANAS TABLE SERVICE	DECK 11, AFT	6:30 PM - 8:30 PM

LATE NIGHT (WAKE)

DECK	TIME
DECK 4, AFT	10:45 PM - 11:45 PM
DECK 11, MID	9:30 PM - 12:30 AM

ADDED FEATURES

DECK	TIME
DECK 11, MID	24 HOURS
EYE SCREAM	DECK 11, MID 11:00 AM - 11:00 PM
ROOM SERVICE	DIAL 0 24 HOURS

ENTERTAINMENT - LOUNGES - BARS
Adults must be 21 and older to consume alcoholic beverages.

DECK	TIME
BON VOYAGE	DECK 3, MID 9:00 AM - 11:00 PM
COVE BAR (18+)	DECK 11, FWD 9:30 AM - 10:30 PM
COVE CAFE (18+)	DECK 11, FWD 7:00 AM - 12:00 MID
CURRENTS (18+)	DECK 13, FWD 10:00 AM - 11:00 PM
D LOUNGE	DECK 4, MID SHOWTIMES
FROZONE TREATS	DECK 11, MID 11:00 AM - 11:00 PM
LA PIAZZA	DECK 4, AFT 12:30 PM - 12:00 MID
MERIDIAN (18+)	DECK 12, AFT 5:00 PM - 12:00 MID
O'GILLIS PUB	DECK 4, AFT 1:00 PM - 12:00 MID
OH LA LA (18+)	DECK 4, AFT 5:00 PM - 12:00 MID
OUTLOOK	DECK 14, MID
SKYLINE (18+)	DECK 4, AFT 5:00 PM - 12:00 MID
THE TUBE (18+)	DECK 4, AFT 10:00 PM - 2:00 AM
VISTA CAFE	DECK 4, MID 7:30 AM - 11:00 PM
WAVES	DECK 12, AFT 10:30 AM - 6:30 PM

Consumers who order raw or partially cooked, ready-to-eat food of animal origin, are hereby informed that the food is not sufficiently cooked to ensure its safety.

GOOXY'S SPORTS
Digital Simulators
Sports Simulator (Basketball, Baseball, Hockey, or Soccer) \$25 / half hr, \$45 / hr
\$12 / half hr, \$20 / hr
Reservations can be made at the Port Adventures Desk, Deck 5, Middap or at the Simulators, Deck 13, Aft