

# PERSONAL NAVIGATOR



Sunrise: 6:48 a.m. Sunset: 8:08 p.m.

Evening Attire: Cruise Casual

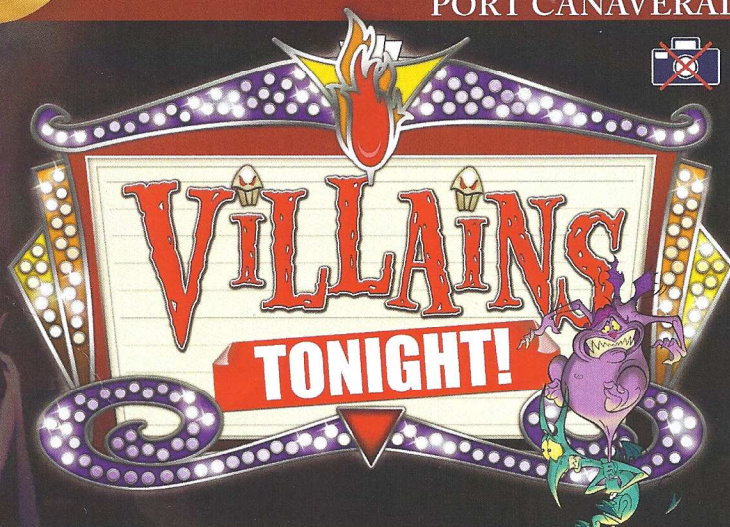
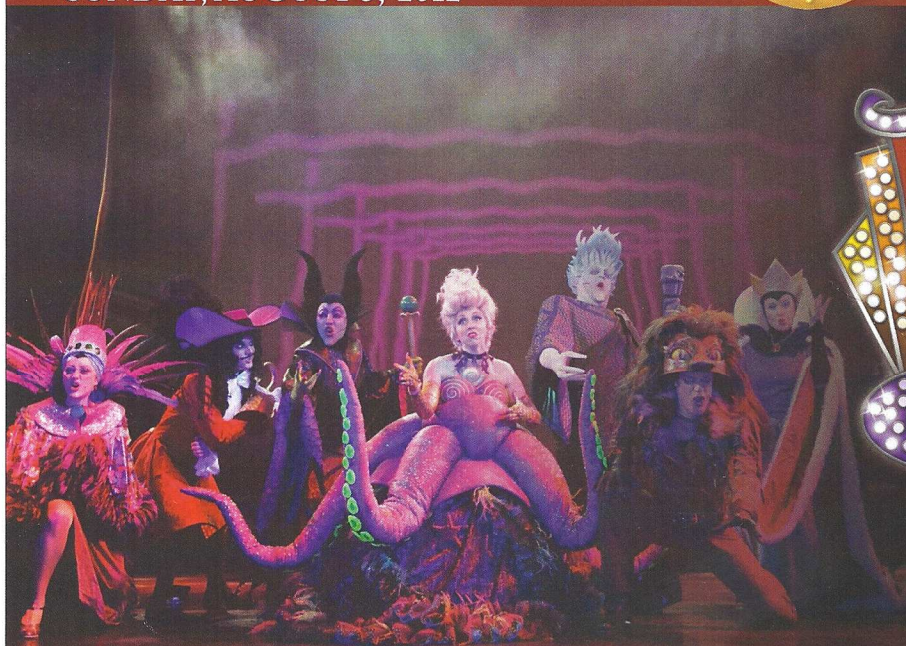
All Aboard: 3:45 p.m.

Sunday: Partly Cloudy High: 81°F/27°C

Monday: Cloudy High: 81°F/27°C

SUNDAY, AUGUST 5, 2012

PORT CANAVERAL



WALT DISNEY THEATRE  
DECKS 3 & 4, FORWARD  
6:15 P.M. & 8:30 P.M.

Assistance available at the entrance to the Walt Disney Theatre 30 minutes prior to show time.

## Welcome Aboard!

### Your Stateroom & Luggage

Staterooms will be ready at 1:30 p.m. Stateroom hosts will deliver luggage throughout the day until 5:30 p.m.

### Staterooms with Bunk Beds

Bunk beds are recessed into the ceiling and will be prepared during evening turndown service by your Stateroom Host/ess.

### Stateroom Safe

Each stateroom is equipped with a secured storage safe. Instructions for use are located on the safe.

### To Change Dining Assignment

Requests for a different seating will be taken today:

- 1:00 - 3:30 p.m.; Book at Royal Palace
- 3:30 - 4:30 p.m.; Please call 7-1831, 7-1832, or 7-1833

### Remy & Palo Bookings for Brunch & Dinner

There are still spaces available for booking:

- 1:00 - 3:30 p.m., Palo; Book at Royal Palace
- 1:00 - 3:30 p.m., Remy; Book at Royal Palace

Reservations required & cover charge applicable.

Please dial 7-9734, or 7-9735 for more information.

### Dinner

- 5:45 p.m. - First seating
- 8:15 p.m. - Second seating

Please check your dining tickets for details of your dining rotation, and bring them to your specific dining location. There is no need to wait in line prior to dinner.

Dining Rooms open at designated seating times & your table is reserved each night of your cruise.

**It's time to go Sailing Away!**  
Join Mickey and Minnie, along with Tinker Bell and the rest of the gang, as they welcome you aboard the Disney Dream.

**4:30 p.m.**  
**Deck Stage,**  
**Deck 11, Midship**

## Don't Miss:

### Welcome Aboard Ship Tour

Meet at Preludes, Deck 3, Forward - 1:00 & 2:00 p.m.

Enjoy the beauty of the Disney Dream with your Cruise Staff in this guided tour.

### Family Fusion Game Show

D Lounge, Deck 4, Midship - 10:15 p.m.

Bring the entire family and test your Disney knowledge in this interactive, family game show.

### Adult Cabaret: Alfred & Seymour

Evolution (18+), Deck 4, Aft - 10:30 p.m.

Featuring the Outrageous Comedy of Alfred & Seymour, as they entertain you in this adult Cabaret-Style show.

### Saludos Amigos Fiesta

D Lounge, Deck 4, Midship - 10:45 p.m.

Hola Amigos! Consider this your exclusive invitation to a Latin dance party, that has all the trimmings of a proper fiesta. Learn to Salsa, Merengue and have a Latin good time, just don't tell Donald about the party - it's a surprise!



Visit Shutters for all your photographic needs, from Digital cameras, batteries, binoculars and accessories. All photos taken during this cruise will be available for viewing on our photo kiosks at Shutters Digital, as well as in your photo folder at Shutters, Deck 4, Midship.

## DINNER MENU

Animator's Palate: Pacific Rim Cuisine  
Enchanted Garden: Continental Market  
Royal Palace: French Dinner

## DRINK OF THE DAY

Paradise Cocktail (Alcoholic)  
Espresso Chiller (Non Alcoholic)

## IMPORTANT NUMBERS

Fire/Security: 7-3001  
Medical Emergency: 7-3000  
Health Center: 7-1923



# FAMILY ACTIVITY HIGHLIGHTS

## FAMILY SUPERSTAR KARAOKE

*D Lounge, Deck 4, Midship - 9:30 p.m.*

Join your Cruise Staff in D Lounge tonight and sing along to your favorite song - fun for everyone.

## SALUDOS AMIGOS FIESTA

*D Lounge, Deck 4, Midship - 10:45 p.m.*

Hola Amigos! Consider this your exclusive invitation to a Latin dance party, that has all the trimmings of a proper fiesta. Learn to Salsa, Merengue and have a Latin good time, just don't tell Donald about the party - it's a surprise!

## Cruise Highlights

<b>Sunday</b>	<b>PORT CANAVERAL</b> <i>All Aboard: 3:45 p.m.</i> <i>Attire: Cruise Casual</i>	<b>VILLAINS TONIGHT!</b> <i>Walt Disney Theatre</i> 6:15 & 8:30 p.m.
<b>Monday</b>	<b>DISNEY'S CASTAWAY CAY</b> <i>All Ashore: 8:30 a.m.</i> <i>All Aboard: 5:00 p.m.</i> <i>Attire: Semi Formal</i>	<b>THE GOLDEN MICKEYS</b> <i>Walt Disney Theatre</i> 6:15 & 8:30 p.m.
<b>Tuesday</b>	<b>NASSAU</b> <i>All Ashore: 9:45 a.m.</i> <i>All Aboard: 6:15 p.m.</i> <i>Attire: Cruise Casual</i>	<b>MOVIE SPECIAL: BRAVE</b> <i>Walt Disney Theatre</i> 5:45 & 8:30 p.m.
<b>Wednesday</b>	<b>DAY AT SEA</b> <i>Attire: Pirate/ Cruise Casual</i>	<b>CABARET: ALFRED &amp; SEYMOUR</b> <i>Walt Disney Theatre</i> 6:15 & 8:30 p.m.
<b>Thursday</b>	<b>DISNEY'S CASTAWAY CAY</b> <i>All Ashore: 8:30 a.m.</i> <i>All Aboard: 5:00 p.m.</i> <i>Attire: Cruise Casual</i>	<b>DISNEY'S BELIEVE</b> <i>Walt Disney Theatre</i> 6:15 & 8:30 p.m.

Subject to change.

# ADULT ACTIVITY HIGHLIGHTS

## FITNESS CLASSES

*Senses Spa and Salon has a variety of seminars and fitness classes available throughout the cruise.*

*Spa Tours - Senses Spa & Salon, 12:00 p.m. - 4:00 p.m.*

*Spa Raffle - Senses Spa & Salon, 3:15 p.m.*

*Seminar: Detox for Health & Weight Loss - Senses Spa & Salon 4:45 p.m.*



## BEVERAGE SEMINARS

*Your Beverage team has a host of tastings and seminars to entertain and educate you. Stop by Guest Services, Deck 3, Midship to pre-book these experiences. Nominal fees apply.*

*Whiskey Tasting - Meridian - 9:00 p.m.*

*Cognac Tasting - Meridian - 10:30 p.m.*

## LIVE MUSIC WITH THE GEORGETOWN TRIO

*District Lounge, Deck 4, Aft - 7:30, 9:30, 10:30 p.m. & 11:15 p.m.*

Join our Musical Trio as they play live in District Lounge for your listening pleasure.

**CLUB  
18\*21**

## CLUB 18\*21 ICE BREAKERS

*Evolution, Deck 4, Aft - 10:00 p.m.*

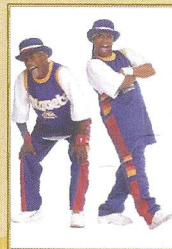
Club 18\*21 is an exclusive gathering for young adult Guests. Come meet fellow cruisers and learn about the great activities the Disney Dream has to offer to help create the perfect cruise experience

## EVOLUTION NIGHTCLUB

*Evolution, Deck 4, Aft - 11:15 p.m.*

Let the first night of your cruise evolve with pumpin' beats from our Guest DJ Pete.

## FEATURED CABARET ACT THIS VOYAGE



### THE OUTRAGEOUS COMEDY OF ALFRED & SEYMOUR

Who says stand-up has to stand still? Combine incredible hip-hop dancing with side-splitting comedy and you get "Alfred and Seymour." It's the most unique comedy concept to grace the stage since Vaudeville.



## DIAMOND BINGO

**D Lounge, Deck 4, Midship**

**Card Sales - 7:30 p.m.**

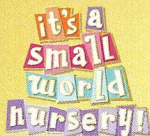
**Game Starts - 7:45 p.m.**

Join us for cash prizes and your chance to win a Diamond heart-shaped necklace courtesy of your Shopping Guide, Nicholas. Every Guest will receive a great shopping pack full of great FREE gifts to collect in Nassau, including a Diamond charm bracelet, a ½ ct colored gemstone pendant, a 1 ct midnight sapphire, and much more!





# YOUTH ACTIVITIES HIGHLIGHTS



Deck 5 Midship (7-5864) 6:00 p.m. - 12:00 Mid  
 Infants and Toddlers can enjoy toys and activities at  
 It's A Small World Nursery. Reservations are first  
 come, first served so please stop by!



Deck 5, Midship (7-1440)  
 6:45 p.m. - 1:00 a.m.



Deck 5, Midship (7-1445)  
 6:00 p.m. - 12:00 Mid

## REGISTRATION FOR 3-12 YEAR OLDS

Meet the Youth Activities Team in the Oceaneer Lab and Oceaneer Club, complete your registration & learn all about the Themed Experiences this cruise!

**CLUBHOUSE SERIES** - The Clubhouse Themed Experiences focus on movement and feature content which appeals to younger children. *Recommended 7 yrs & younger.*

**STORYBOOK SERIES** - The Storybook Series Themed Experiences are designed with a strong connection to the Disney classic stories. *Recommended 7 yrs & younger.*

**JUMP UP! SERIES** - The Let's Move! Themed Experiences will include large ground games & movement-oriented activities.

**CREATE & INVENT SERIES** - The Create & Invent Themed Experiences will have a tactile focus allowing children to create and admire their work.

**IN THE SPOTLIGHT SERIES** - The In The Spotlight Themed Experiences focus on children's stage presence with lots of activities and enthusiasm. *Recommended 7 yrs & older.*

**SOLVE IT! SERIES** - The Solve It! Themed Experiences are less active, but will challenge children with problem/solutions-based activities. *Recommended 7 yrs & older.*

**YOUTH ACTIVITIES OPEN HOUSE** - Activities for families, adults and children of all ages to enjoy together.

### DINE & PLAY

A convenience for families dining at 8:15 p.m., our Youth Activities Counselors will be available at 9:15 p.m. at the entrance of Royal Palace, Enchanted Garden and Animator's Palate dining rooms to bring registered children to join the fun in the Youth Activity areas.

### YOUTH ACTIVITIES OPEN HOUSE

Open House is an opportunity for all to come and participate in a variety of exciting activities and free time in the Oceaneer Club, Lab, Edge and Vibe throughout the cruise. During these times secured programming will still be offered in the other venue for those looking to check their children into care.

Deck 13 Midship (7-9743) - 6:00 p.m. - 12:00 Mid.

### EDGE (11- 14 YEAR OLDS)

Edge is an interactive play space: play video games, watch television and participate in arts and crafts with kids their own age.

### TAKING IT TO THE EDGE

10:00 p.m. Edge

Come and meet your counselors and fellow tweens as we get to know each other and what there is for you to do all week long in Edge.



Entrance on Deck 4 Forward (7- 9417)

6:00 p.m. - 1:00 a.m.

### THE DOWNLOAD (14-17 YEAR OLDS)

10:15 p.m. Vibe

Come up to Vibe and help plan all the fun activities you will be doing this cruise with your new friends! We'll use our very own Teens-only intranet database to decide how our week will go!

# BUENA VISTA THEATRE

## Feature Movies this Voyage

### SUNDAY - PORT CANAVERAL

5:45 p.m. PG Tangled  
 8:15 p.m. PG Tangled  
 10:30 p.m. PG-13 The Avengers **DOLBY 3D**

### MONDAY - DISNEY'S CASTAWAY CAY

10:30 a.m. PG-13 People Like Us **DOLBY 3D**  
 2:30 p.m. G Cars 2 **DOLBY 3D**  
 5:00 p.m. PG-13 The Avengers **DOLBY 3D**  
 8:00 p.m. PG-13 The Avengers **DOLBY 3D**  
 11:00 p.m. PG-13 People Like Us

### TUESDAY - NASSAU

1:30 p.m. PG The Muppets  
 3:45 p.m. G DisneyNature: Chimpanzee  
 5:30 p.m. PG-13 People Like Us  
 8:15 p.m. PG-13 People Like Us  
 10:45 p.m. PG Brave - 2D Version

### WEDNESDAY - DAY AT SEA

8:30 a.m. PG The Muppets  
 12:30 p.m. PG Brave - 2D Version  
 2:30 p.m. PG-13 The Avengers - 2D Version **DOLBY 3D**  
 5:45 p.m. PG Brave **DOLBY 3D**  
 8:30 p.m. PG Brave **DOLBY 3D**  
 11:00 p.m. PG-13 The Avengers **DOLBY 3D**

### THURSDAY - DISNEY'S CASTAWAY CAY

8:30 a.m. PG Brave - 2D Version  
 10:30 a.m. PG-13 People Like Us  
 12:45 p.m. PG-13 The Avengers - 2D Version **DOLBY 3D**  
 3:30 p.m. PG Brave  
 5:30 p.m. PG The Muppets  
 8:15 p.m. PG The Muppets  
 10:30 p.m. PG Brave - 2D Version  
 Subject to change.



Bring the entire family and test your Disney knowledge in this interactive game show, Family Fusion.

**D Lounge,**  
**Deck 4, Midship**  
 10:15 p.m.



### ADULT CABARET

Featuring the Outrageous Comedy of Alfred & Seymour, as they entertain you in this adult Cabaret-Style show.

**Evolution (18+), Deck 4, Aft**  
 10:30 p.m.



# MORE TO ENJOY WHILE ONBOARD

## PLAN YOUR NEXT CRUISE

Book a future cruise today and you'll save 10%, receive up to a \$200 onboard credit, and pay a reduced deposit! Tune to Channel 8 on your stateroom TV for details and visit the Future Cruise Sales Desk, Deck 4, Midship.



## DISNEY VACATION CLUB® MEMBER CELEBRATION

Members! Mix and mingle with other Members and learn how you can enhance your Membership! Please see a *Disney Vacation Club* representative on Deck 4, Midship, or call 7-2805 from your stateroom phone for more information.



## READY TO SHOP IN NASSAU?

Join Nicholas, your shopping expert in the Buena Vista Theatre for his one & only Port & Shopping Show at 2:45 p.m. This is the time to pick up your Nassau Shopping maps, and your FREE shopping ashore coupon books packed with hundreds of savings. Also, one lucky guest will win a Tanzanite pendant on an Omega Necklace! Swing by the Shopping Desk later this evening to pick up your VIP cards, and any other shopping information you might have!



## BEVERAGE SEMINARS AT SEA

Indulge in the world of beverage! Our beverage team is sharing all their secrets about your favorite drinks. Please visit District Lounge between 12:00 p.m. and 3:00 p.m. to secure your spot. Tasting seminars are for Guests 21 and over. Limited availability.

## FOUR-NIGHT WINE PACKAGES:

### THE CLASSIC WINE PACKAGE & THE PREMIUM WINE PACKAGE

These four-night packages entitle you to select fine wines from our specially designed wine list with up to 25% savings over regular prices. Your dining server will provide more details.

## VALUE WATER PACKAGES

Purchase 24 chilled bottles of Evian water and save over regular prices. For delivery, dial Room Service from your stateroom telephone.



From a visit to the world-renowned Atlantis Resort in Nassau to Parasailing high above the turquoise waters around Castaway Cay, there is an adventure for everyone on your Disney Dream cruise. Take advantage of the Two-Day Castaway Cay rentals specials and save 75% on the same rentals for your return trip to Castaway Cay. Visit the friendly team at the Port Adventures Desk, Deck 5, Midship, to learn more about these, and many more Port Adventures.

*Port Adventures Desk, Deck 5, Midship*

## SHOPPING

### DESIGNER SUNGLASSES THE LOOK IS NOW!

Whitecaps and Whozits and Whatzits is the sunglass location. All the brands can be seen here - Fossil, Juicy Couture, Carrera, Gucci, Maui Jim and Oakley all in an array of styles. What will you be wearing?

### ARE YOU ISLAND READY?

Castaway Cay is tomorrow - be prepared! Visit Whozits and Whatzits on Deck 11, and all merchandise locations on Deck 3, to get all your needs. Sunglasses, sunscreen, hats and so much more!

### DISCOVER THE DISNEY DREAM VISTA GALLERY

Disney Cruise Line exclusive art. Vista Gallery is your location to immerse yourself in the world of fine art. Images exclusive to Disney Cruise Line. Don't forget to enter the excitement of bidding on the silent auction, bids close at 6:00 p.m. on the last night of the cruise.

### INDULGE IN LUXURY WITH GODIVA!

Direct from Belgium and now available on the Disney Dream enjoy the chocolate bliss of Godiva. For all chocolate lovers this is a must have journey for your taste buds. Your indulgent destination is Whitecaps, Deck 3, Forward.

### PREMIUM WATCH EVENT!

A watch is a functional way to pull your look together. Choose the one that suits you best from this extensive selection of styles and brands. Ranging from Fossil, Kenneth Cole to DKNY & more. Also, see the Disney range of watches available. Whitecaps, Deck 3, Forward.

### NIKE APPAREL DEAL

Golfers it's time to "Tee-Up"- polos and shorts available. Buy one piece of any Nike apparel and get another Nike piece 20% off. You are sure to hit a hole in one with this amazing offer! Sea Treasures, Deck 3, Forward.

### SHOPPING ONBOARD

Tax and duty free shopping right here on board. A great range of jewelry, fragrance and liquor all at competitive prices is available in Whitecaps. Buy on board and we will package it safely for your journey home.

Due to port regulations, when the ship is docked, the stores will remain closed.

## SENSES RAINFOREST DELUXE CRUISE PASS

Enjoy our scented showers, aroma steam, sauna rooms and private jacuzzi overlooking the ocean. Also, read a nice book on the warm loungers! Unlimited entry when you purchase your cruise pass today!

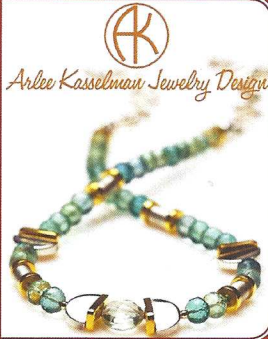
Couples \$169.00 and Singles \$124.00  
Limited number of passes on sale!

*Senses Spa & Salon, Deck 11, Forward*  
*Ext. 7-1465*

## ARLEE KASSELMAN JEWELRY DESIGN UNVEILS: WHAT WOMEN WANT!

Stand out from the crowd with an Arlee Kasselmann "Art Within Art" one-of-a-kind or limited edition design. Please join us for an unveiling of Arlee's new fashion forward collection.

*Whitecaps, Deck 3, Forward*



## Shutters SAY CHEESE!

Professional Portraits, Lobby Atrium, Deck 3, Midship.

Lifestyle - Six Guests maximum

7:15 - 8:30 p.m. & 9:30 - 10:30 p.m.

**Larger Groups - Please contact the Shutters team on Deck 4 for an appointment**

*\*Please note that photos are available for viewing on our interactive photo kiosks approximately five hours after being taken and are only available for purchase during this cruise.*

## IMPORTANT INFORMATION

### Security Notice

All Guests (including children) who wish to disembark the ship are required to present their Key to the World card at the gangway. A photo ID is also required for those Guests who are 18 years of age or older. Guests under the age of 18 are required to have a Parent, Guardian or other responsible adult sign an authorization form at the time it is given out if they wish to go ashore unaccompanied. Authorization forms are available at the gangways and Guest Services.

### Cold and Flu Reminder

Please wash hands frequently and thoroughly, particularly before meals. Contact the Health Center by dialing 7-1923, should anyone in your party become ill.

### Corridor Quiet Hours

As a courtesy to all our Guests, please recognize quiet hallway hours from 10:00 p.m. til 8:00 a.m.

### Inclement Weather

For the safety of all Guests, outdoor events may be changed due to unforeseen weather conditions.

### Environmental Message

With Disney's commitment to the Environment, please refrain from throwing anything over the Ship's side. Thank you!

### No Reserved Seats Policy

As a courtesy to all our Guests, we kindly advise that the saving of seats is not permitted in the Walt Disney Theatre, and the saving of the sun loungers is not permitted on Deck 11, 12 and 13. Items left unattended will be returned to lost and found at Guest Services, Deck 3 Midship.

### Smoking

For the comfort of our guests the following areas are designated as Smoking areas:

- Deck 13, Forward, port side, by "Currents"
  - Deck 12, Aft, port side outdoor area that is accessible through the Meridian Lounge
  - Deck 4, Aft, port side from 6:00 p.m. to 6:00 a.m. only (all of Deck 4 is no smoking from 6:00 a.m. to 6:00 p.m.)
- Smoking is permitted on stateroom verandahs. Smoking is prohibited inside all guest staterooms. Guests found smoking in their staterooms will be charged a \$250 stateroom recovery fee.

### Walt Disney Theatre

Theatrical performances may use artificial fog, strobe lights, pyrotechnics and other special effects. For the safety of our performers and the comfort of those around you, the use of any photography, video recording devices or any electronic equipment is prohibited.

### Verandah Safety

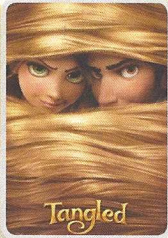
Please do not leave any combustible materials on your balcony when not present in your stateroom for safety reasons.







# BUENA VISTA THEATRE



5:45 p.m. & 8:15 p.m.  
Run Time: 1 hr 41 mins  
Rating: PG



10:30 p.m.  
Run Time: 2 hr 26 mins  
Rating: PG-13

## Character Appearances

**DONALD DUCK**  
Deck 4, Balcony  
12:00 p.m. & 1:00 p.m.  
Preludes  
7:30 p.m. & 9:45 p.m.

**CHIP & DALE**  
Lobby Atrium  
7:00 p.m. & 10:00 p.m.

**PLUTO**  
Deck 4, Balcony  
12:30 p.m. & 1:30 p.m.  
Lobby Atrium  
7:30 p.m. & 9:45 p.m.

**MINNIE MOUSE**  
Lobby Atrium  
7:30 p.m. & 9:30 p.m.

**MICKEY MOUSE**  
Deck 4, Balcony - 5:30 p.m.,  
7:15 p.m. & 9:45 p.m.

**GOOFY**  
Lobby Atrium -  
8:00 p.m. & 10:15 p.m.



For details of daily Disney character appearances, refer to the character line on your Navigator Grid, or the digital character board in the Lobby Atrium.

## YOUTH ACTIVITIES THEMED EXPERIENCES

**CLUBHOUSE SERIES**  
focuses on movement and features content which appeals to younger children.

**JUMP UP! SERIES**  
includes large ground games & movement-oriented activities.

**IN THE SPOTLIGHT SERIES**  
focuses on children's stage presence with lots of activities and enthusiasm.

**STORYBOOK SERIES**  
is designed with a strong connection to the Disney classic stories.

**CREATE & INVENT SERIES**  
will have a tactile focus allowing children to create and admire their work.

**SOLVE IT! SERIES**  
are less active, but will challenge children with problem/solutions-based activities.



are activities for families, adults and children of all ages to enjoy together.

## SHIP DIRECTORY

### YOUTH ACTIVITIES

DISNEY'S OCEANEER CLUB	DECK 5, MID	6:45 P.M. - 1:00 A.M.
DISNEY'S OCEANEER LAB	DECK 5, MID	6:00 P.M. - 12:00 MID.
EDGE	DECK 13, MID	6:00 P.M. - 12:00 MID.
VIBE	DECK 4, FWD	6:00 P.M. - 1:00 A.M.
IT'S A SMALL WORLD NURSERY	DECK 5, MID	6:00 P.M. - 12:00 MID.

### RECREATION

AQUADUCK	DECK 12, MID	12:00 P.M. - 3:00 P.M. 4:30 P.M. - 12:00 MID.
BASKETBALL COURT	DECK 13, AFT	12:00 A.M. - 6:00 P.M.
DONALD'S POOL	DECK 11, MID	11:45 A.M. - 3:30 P.M. 5:30 P.M. - 12:00 MID.
GOLF/SPORTS SIMULATORS	DECK 13, AFT	12:00 P.M. - 3:30 P.M. 4:30 P.M. - 6:00 P.M.
GOOFY & MAX'S MINI GOLF	DECK 13, AFT	11:00 A.M. - 10:00 P.M.
MICKEY'S POOL	DECK 11, MID	11:45 A.M. - 12:00 MID.
MICKEY'S SLIDE	DECK 11, MID	12:30 P.M. - 3:30 P.M. 4:30 P.M. - 7:00 P.M.
MIDSHIP DETECTIVE AGENCY	DECK 5, MID	11:00 A.M. - 11:00 P.M.
NEMO'S REEF	DECK 11, MID	12:00 P.M. - 3:30 P.M. 4:30 P.M. - 7:00 P.M.
PORT ADVENTURES DESK	DECK 5, MID	12:00 P.M. - 3:30 P.M. 4:30 P.M. - 10:30 P.M.
QUIET COVE POOL	DECK 11, FWD	12:00 P.M. - 12:00 MID.
SENSES FITNESS CENTER	DECK 11, FWD	12:00 P.M. - 10:00 P.M.

### GENERAL INFORMATION

ARR-CADE	DECK 11, AFT	24 HOURS
DISNEY VACATION CLUB	DECK 4, MID	5:00 P.M. - 10:00 P.M.
FUTURE CRUISE DESK	DECK 4, MID	7:30 P.M. - 8:30 P.M.
GUEST SERVICES	DECK 3, MID	24 HOURS
HAIRBRAIDING	DECK 11, MID	4:30 P.M. - 10:00 P.M.
HEALTH CENTER	DECK 1, MID	4:30 P.M. - 7:00 P.M.
PORT & SHOPPING DESK	DECK 4, MID	6:00 P.M. - 8:00 P.M. 9:30 P.M. - 10:30 P.M.
PRELUDES	DECK 3, FWD	5:45 P.M. - 6:30 P.M. 8:00 P.M. - 8:45 P.M.
SENSES SPA AND SALON	DECK 11, FWD	12:00 P.M. - 10:00 P.M.
SHUTTERS PHOTO GALLERY	DECK 4, MID	7:00 P.M. - 11:00 P.M.

### SHOPPING

MICKEY'S MAINSAIL	DECK 3, FWD	6:00 P.M. - 11:00 P.M.
SEA TREASURES	DECK 3, FWD	6:00 P.M. - 11:00 P.M.
VISTA GALLERY	DECK 4, MID	6:00 P.M. - 11:00 P.M.
WHITECAPS	DECK 3, FWD	6:00 P.M. - 11:00 P.M.
WHOZITS & WHATZITS	DECK 11, MID	6:00 P.M. - 9:00 P.M.

### DINNER MENU

Animator's Palate: Pacific Rim Cuisine  
Enchanted Garden: Continental Market  
Royal Palace: French Dinner  
Dining Times: 5:45 p.m. & 8:15 p.m.

### DRINK OF THE DAY

Paradise Cocktail (Alcoholic)  
Espresso Chiller (Non Alcoholic)

### WEATHER FORECAST

Sunday: Partly Cloudy  
High: 81°F/27°C  
Monday: Cloudy  
High: 81°F/27°C

Evening Attire: Cruise Casual

## DINING & LOUNGES

### LUNCH

CABANAS FOOD COURT (PORT SIDE)	DECK 11, AFT	11:30 A.M. - 3:15 P.M.
CABANAS FOOD COURT (STARBOARD)	DECK 11, AFT	12:00 P.M. - 3:00 P.M.
ENCHANTED GARDEN	DECK 2, MID	12:15 P.M. - 2:00 P.M.
FILMORE'S FAVORITES	DECK 11, MID	12:00 P.M. - 7:00 P.M.
LUIGI'S PIZZA	DECK 11, MID	12:00 P.M. - 6:00 P.M.
TOW MATER'S GRILL	DECK 11, MID	12:00 P.M. - 6:00 P.M.

### DINNER

ANIMATOR'S PALATE	DECK 3, AFT	5:45 P.M. & 8:15 P.M.
ENCHANTED GARDEN	DECK 2, MID	5:45 P.M. & 8:15 P.M.
ROYAL PALACE	DECK 3, MID	5:45 P.M. & 8:15 P.M.
TOW MATER'S GRILL	DECK 11, MID	6:00 P.M. - 11:00 P.M.
PALO & REMY (18+)	DECK 12, AFT	6:00 P.M. - 9:00 P.M.

(RESERVATION REQUIRED & COVER CHARGE APPLICABLE. DIAL #7-9734)

### LATE NIGHT SNACKS

LUIGI'S PIZZA	DECK 11, MID	9:30 P.M. - 12:00 MID.
THE DISTRICT	DECK 4, AFT	10:45 P.M. - 11:45 P.M.

### ADDED FEATURES

BEVERAGE STATION	DECK 11, AFT	24 HOURS
EYE SCREAM	DECK 11, MID	12:00 P.M. - 11:00 P.M.
ROOM SERVICE	DIAL 0	24 HOURS

### ENTERTAINMENT - LOUNGES - BARS

Adults must be 21 and older to consume alcoholic beverages.

687 PUB	DECK 4, AFT	12:00 P.M. - 9:00 P.M.
687 PUB (18+)	DECK 4, AFT	9:00 P.M. - 12:00 MID.
BON VOYAGE	DECK 3, MID	11:30 A.M. - 11:00 P.M.
COVE BAR (18+)	DECK 11, FWD	12:00 P.M. - 11:00 P.M.
COVE CAFE (18+)	DECK 11, FWD	7:00 A.M. - 6:00 P.M.
COVE CAFE WINE BAR (18+)	DECK 11, FWD	6:00 P.M. - 12:00 MID.
CURRENTS	DECK 13, FWD	12:00 P.M. - 11:00 P.M.
D LOUNGE	DECK 4, MID	SHOWTIMES
DISTRICT LOUNGE	DECK 4, AFT	12:00 P.M. - 9:00 P.M.
DISTRICT LOUNGE (18+)	DECK 4, AFT	9:00 P.M. - 12:00 MID.
EVOLUTION (18+)	DECK 4, AFT	10:00 P.M. - 2:00 A.M.
FROZONE TREATS	DECK 11, MID	11:30 A.M. - 11:00 P.M.
MERIDIAN (18+)	DECK 12, AFT	5:00 P.M. - 12:30 A.M.
OUTLOOK	DECK 14, MID	SUNSET TIMES
PINK (18+)	DECK 4, AFT	5:00 P.M. - 12:30 A.M.
SKYLINE (18+)	DECK 4, AFT	5:00 P.M. - 1:00 A.M.
VISTA CAFE	DECK 4, MID	12:00 P.M. - 11:00 P.M.
WAVES	DECK 12, AFT	12:00 P.M. - 7:00 P.M.

Consumers who order raw or partially cooked, ready-to-eat food of animal origin, are hereby informed that the food is not sufficiently cooked to ensure its safety.

## GOOFY'S SPORTS Digital Simulators



**Sports Simulator**  
(Basketball, Baseball, Hockey, or Soccer) \$12 / half hr, \$20 / hr

**Golf Simulator**  
\$25 / half hr, \$45 / hr

Reservations can be made at the Port Adventures Desk, Deck 5, Midship or at the Simulators, Deck 13, Aft